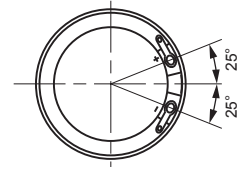
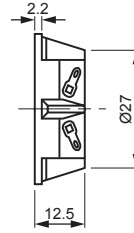
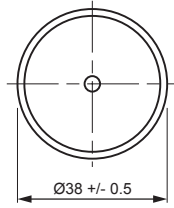




ULTRASONIC SPEAKER

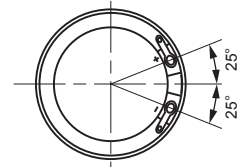
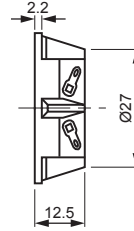
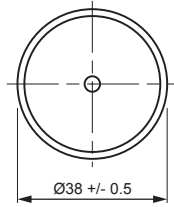


Unit : mm

Electrical Specifications

Part Number	USPK3813T
Function	Transmitter
Center Frequency	25 +/- 5 KHz
Sensitivity [0 dB = 1V / ubar]	-
Sound Pressure Level [at 5.5 Vp-p]	Min. 100 dBA at 50 cm
Input Voltage	Max. 30 Vp-p
Operating Temperature	-20 ~ +70°C
Housing	ABS
Colour	Black

ULTRASONIC SPEAKER

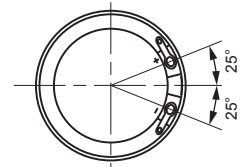
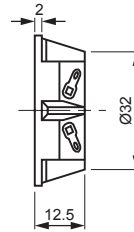
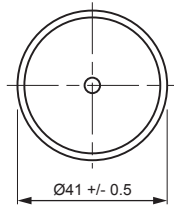


Unit : mm

Electrical Specifications

Part Number	USPK3813TU
Function	Transmitter
Center Frequency	25 +/- 5 KHz
Sensitivity [0 dB = 1V / ubar]	-
Sound Pressure Level [at 5.5 Vp-p]	Min. 100 dBA at 50 cm
Input Voltage	Max. 30 Vp-p
Operating Temperature	-20 ~ +70°C
Housing	ABS
Colour	Black with Undertint

ULTRASONIC SPEAKER



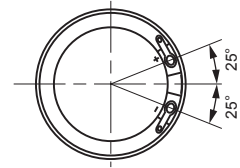
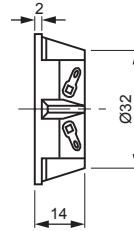
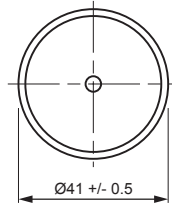
Unit : mm

Electrical Specifications

Part Number	USPK4113T
Function	Transmitter
Center Frequency	22 +/- 1 KHz
Sensitivity [0 dB = 1V / ubar]	-
Sound Pressure Level [at 2.83 Vrms]	Min. 90 dBA at 50 cm
Input Voltage	Max. 10 Vrms
Operating Temperature	-10 ~ +50°C
Housing	ABS
Colour	Black



ULTRASONIC SPEAKER

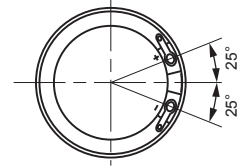
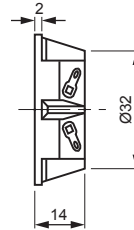
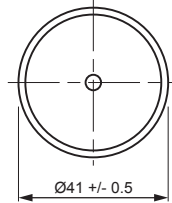


Unit : mm

Electrical Specifications

Part Number	USPK4114T
Function	Transmitter
Center Frequency	22 +/- 1 KHz
Sensitivity [0 dB = 1V / ubar]	-
Sound Pressure Level [at 2.83 Vrms]	Min. 90 dBA at 50 cm
Input Voltage	Max. 10 Vrms
Operating Temperature	-10 ~ +50°C
Housing	ABS
Colour	Black

ULTRASONIC SPEAKER

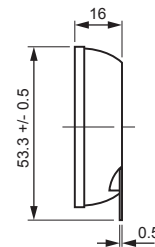
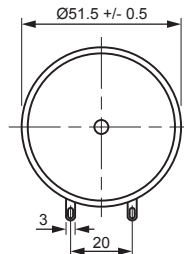


Unit : mm

Electrical Specifications

Part Number	USPK4114TU
Function	Transmitter
Center Frequency	20 +/- 3 KHz
Sensitivity [0 dB = 1V / ubar]	-
Sound Pressure Level [at 2.83 Vrms]	Min. 90 dBA at 50 cm
Input Voltage	Max. 10 Vrms
Operating Temperature	-20 ~ +70°C
Housing	ABS
Colour	Black with Undertint

ULTRASONIC SPEAKER



Unit : mm

Electrical Specifications

Part Number	USPK5216T
Function	Transmitter
Center Frequency	22 +/- 1 KHz
Sensitivity [0 dB = 1V / ubar]	-
Sound Pressure Level [at 10 Vp-p]	Min. 92 dBA at 10 cm
Input Voltage	Max. 30 Vp-p
Operating Temperature	-20 ~ +70°C
Housing	PBT
Colour	Black