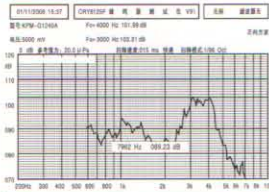


Magnetic Transducer (without driving circuit)

KPM-G 1240A MAGNETIC TRANSDUCER

FREQUENCY RESPONSE
[actual curve of type]



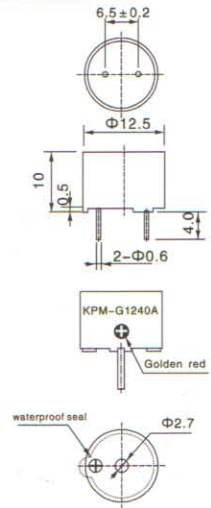
Model No	KPM-G1240A
Rated Voltage	3V
Operating Voltage	2~5V
Max Rated Current	50mA
Coil Resistance (DC)	14 ± 2 Ω
Coil Impedance (AC)	40 Ω
Min. Sound Pressure Level	94dB/4000Hz/3V/10cm
Resonant Frequency	4000Hz
Tone Nature	Continuous
Operating Temperature	-20~+70°C
Storage Temperature	-30~+80°C
Weight	2g

RoHS Compliant



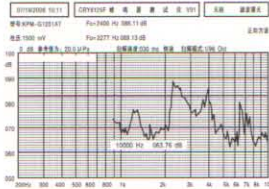
color Black
PBT Housing Material
Pin Terminal

DIMENSIONS



KPM-G 1201AT MAGNETIC TRANSDUCER

FREQUENCY RESPONSE
[actual curve of type]



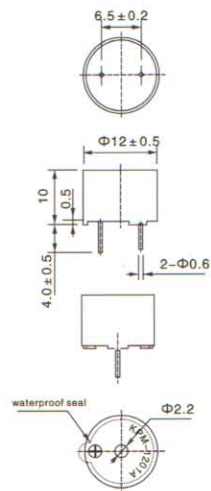
Model No	KPM-G1201AT
Rated Voltage	1.5V
Operating Voltage	1~2V
Max Rated Current	40mA
Coil Resistance (DC)	16 ± 2 Ω
Coil Impedance (AC)	40 Ω
Min. Sound Pressure Level	80dB/1.5V/2400Hz/10cm
Resonant Frequency	2400Hz
Tone Nature	Continuous
Operating Temperature	-20~+70°C
Storage Temperature	-30~+80°C
Weight	2g

RoHS Compliant



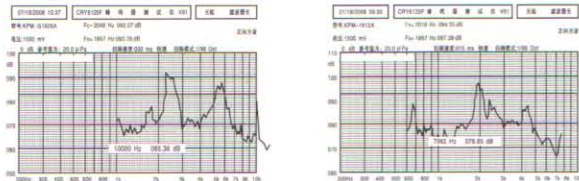
color Black
PBT Housing Material
Pin Terminal

DIMENSIONS



KPM-G 16XXA SERIES MAGNETIC TRANSDUCER

FREQUENCY RESPONSE
[actual curve of type]



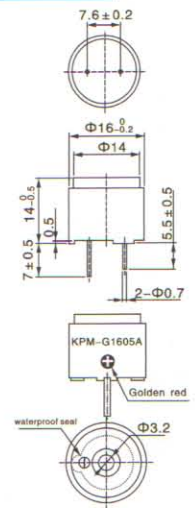
Model No	KPM-G1605A	KPM-G1612A
Rated Voltage	5V	12V
Operating Voltage	4~8V	6~18V
Max Rated Current	40mA	
Coil Resistance (DC)	50 ± 5 Ω	115 ± 12 Ω
Coil Impedance (AC)	110 Ω	200 Ω
Min. Sound Pressure Level	85dB/2048Hz/5V/10cm	85dB/2048Hz/12V/10cm
Resonant Frequency	2048Hz	
Tone Nature	Continuous	
Operating Temperature	-20~+70°C	-30~+80°C
Storage Temperature	-30~+80°C	-40~+85°C
Weight	7g	

RoHS Compliant



color Black
MPPO Housing Material
Pin Terminal

DIMENSIONS



The information contained herein is believed to be correct, but no guarantee for accuracy, completeness KPE Electronics Ltd. reserves the right to make changes without notification.