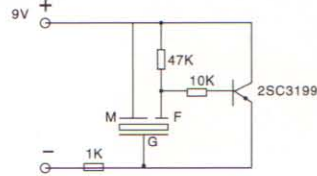
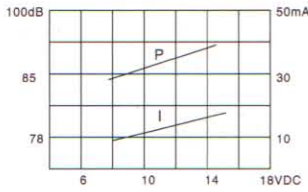


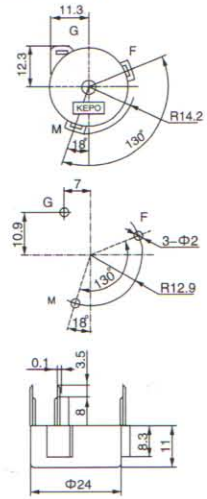
Self-driven Piezo Transducer

KPT3-G2438 SELF-DRIVEN PIEZO TRANSDUCER



color Black
PA66 Housing Material
Pin Terminal

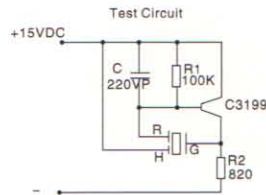
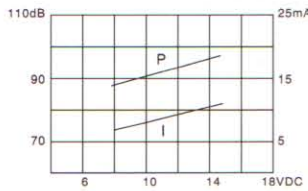
DIMENSIONS



Model No	KPT3-G2438
Rated Voltage	9VDC
Max Allowable Voltage	3-30VDC
Max Rated Current	9mA
Min Sound Pressure Level	80dB/9VDC/30cm
Resonant Frequency	4.0 ± 0.5KHz
Tone Nature	Continuous
Operating Temperature	-20~+70°C
Storage Temperature	-30~+80°C
Weight	3.8g

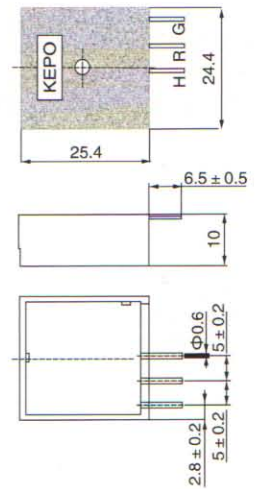
RoHS Compliant

KPT3-G2520 SELF-DRIVEN PIEZO TRANSDUCER



color Black
PBT Housing Material
Pin Terminal

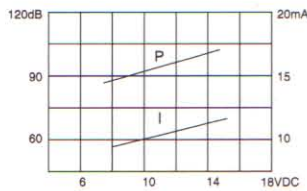
DIMENSIONS



Model No	KPT3-G2520
Rated Voltage	15VDC
Max Allowable Voltage	30VDC
Max Rated Current	20mA
Min Sound Pressure Level	90dB /15VDC/10cm
Resonant Frequency	3.2 ± 0.5KHz
Tone Nature	Continuous
Operating Temperature	-30 ~ +115°C
Storage Temperature	-40 ~ +125°C
Weight	4g

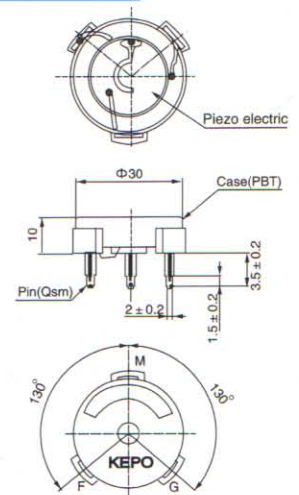
RoHS Compliant

KPT3-G3039 SELF-DRIVEN PIEZO TRANSDUCER



color Black
PBT Housing Material
Pin Terminal

DIMENSIONS



Model No	KPT3-G3039
Rated Voltage	12VDC
Max Allowable Voltage	3-18VDC
Max Rated Current	13mA
Min Sound Pressure Level	106dB/12VDC/5cm
Resonant Frequency	3.9 ± 0.5KHz
Tone Nature	Continuous
Operating Temperature	-20~+80°C
Storage Temperature	-30~+100°C
Weight	6g

RoHS Compliant

The information contained herein is believed to be correct but no guarantee for accuracy/completeness KEPO Electronics Ltd./reserves the right to make changes without notification.