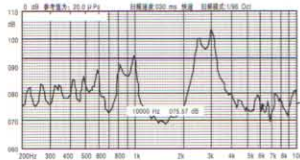


# Piezo Transducer

## KPT-G1910 PIEZO TRANSDUCER

FREQUENCY RESPONSE  
[actual curve of type]



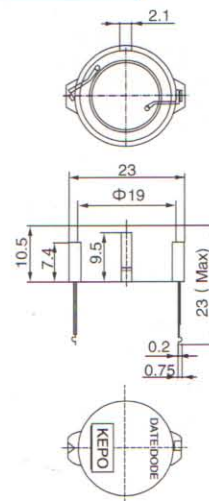
<b>Model No</b>	<b>KPT-G1910</b>
Rated Voltage	10Vp-p Square Wave
Max Allowable Voltage	30Vp-p Square Wave
Max Rated Current	9mA
Min.Sound Pressure Level	90dB/10Vp-p Square Wave/2.7KHz/10cm
Capacitance at 100HZ	32000 ± 30%PF
Resonant Frequency	2.7 ± 0.5KHz
Tone Nature	Continuous
Operating Temperature	-20 ~ +80°C
Storage Temperature	-30 ~ +100°C
Weight	2.0g

RoHS Compliant



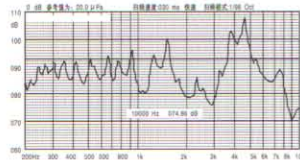
color Black  
PA Housing Material  
Pin Terminal

### DIMENSIONS



## KPT-G2210B PIEZO TRANSDUCER

FREQUENCY RESPONSE  
[actual curve of type]



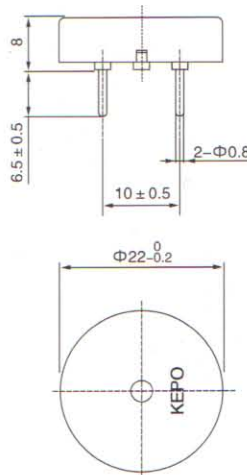
<b>Model No</b>	<b>KPT-G2210B</b>
Rated Voltage	12Vp-p Square Wave
Max Allowable Voltage	30Vp-p Square Wave
Max Rated Current	3mA
Min.Sound Pressure Level	88dB/12Vp-p Square Wave/4.0KHz/10cm
Capacitance at 100HZ	15000 ± 30%PF
Resonant Frequency	4.0 ± 0.5KHz
Tone Nature	Continuous
Operating Temperature	-20 ~ +80°C
Storage Temperature	-30 ~ +100°C
Weight	2.5g

RoHS Compliant



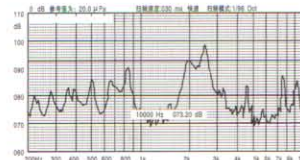
color Black  
PA Housing Material  
Pin Terminal

### DIMENSIONS



## KPT-G2223 SERIES PIEZO TRANSDUCER

FREQUENCY RESPONSE  
[actual curve of type]



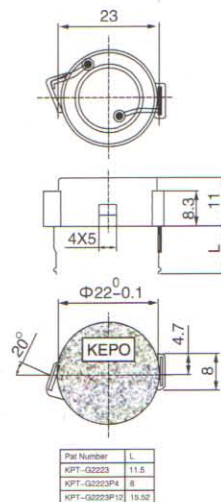
<b>Model No</b>	<b>KPT-G2223</b>	<b>KPT-G2223P12</b>	<b>KPT-G2223P4</b>
Rated Voltage		3Vp-p Square Wave	
Max Allowable Voltage	25Vp-p Square Wave	30Vp-p Square Wave	
Max Rated Current		1mA	
Min.Sound Pressure Level		75dB/3Vp-p Square Wave/2.0KHz/10cm	
Capacitance at 100HZ	25000 ± 30%PF	30000 ± 30%PF	
Resonant Frequency		2.0 ± 0.5KHz	
Tone Nature		Continuous	
Operating Temperature		-20 ~ +70°C	
Storage Temperature		-30 ~ +80°C	
Weight		3g	

RoHS Compliant



color Black  
PA Housing Material  
Pin Terminal

### DIMENSIONS



Part Number	L
KPT-G2223	11.5
KPT-G2223P4	8
KPT-G2223P12	15.52

The information contained herein is believed to be correct, but no guarantee for accuracy, completeness KEPO Electronics Ltd reserves the right to make changes without notification.