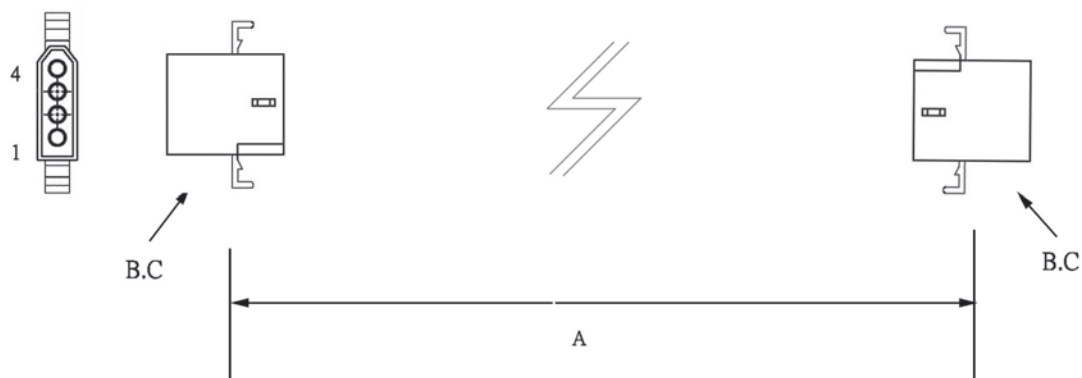
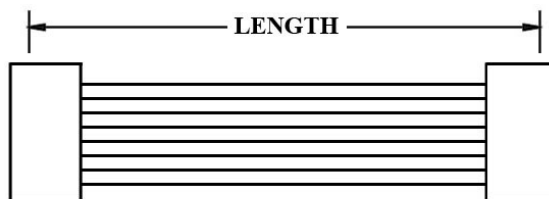
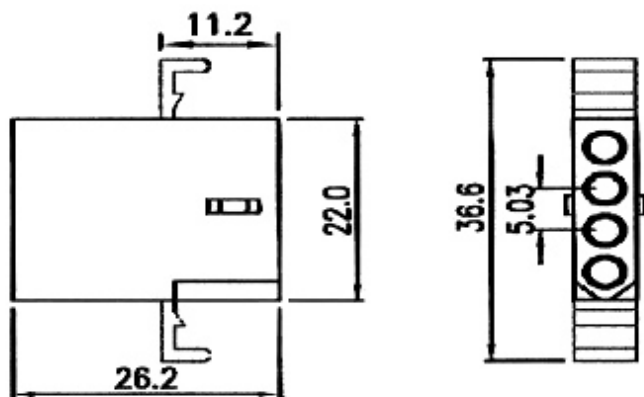


WIRE HARNESS CABLE WITH 2*5.03MM PITCH WIRE-TO-WIRE CRIMPED HOUSINGS (F1)

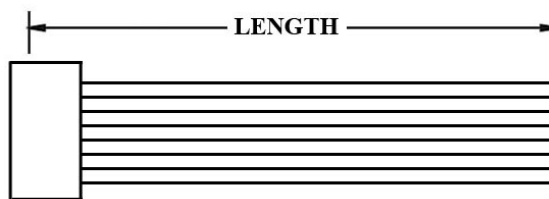


K503HF1X4

5.03MM PITCH HOUSING P/N 503HF-1X4HW



K503H1



K503HT

ORDERING INFORMATION:

P/N K 1 1 1 1 1 1 1 - 1 1 C M

1. HOUSING TYPE AT 2 ENDS:

"503HF" 5.03MM PITCH Ø2.36MM WIRE HOUSING TO HOUSING (WIRING 1:1)

"503H1" DITTO, BUT SAME DIRECTION OF CONTACTS AT 2 ENDS (WIRING 1:N)

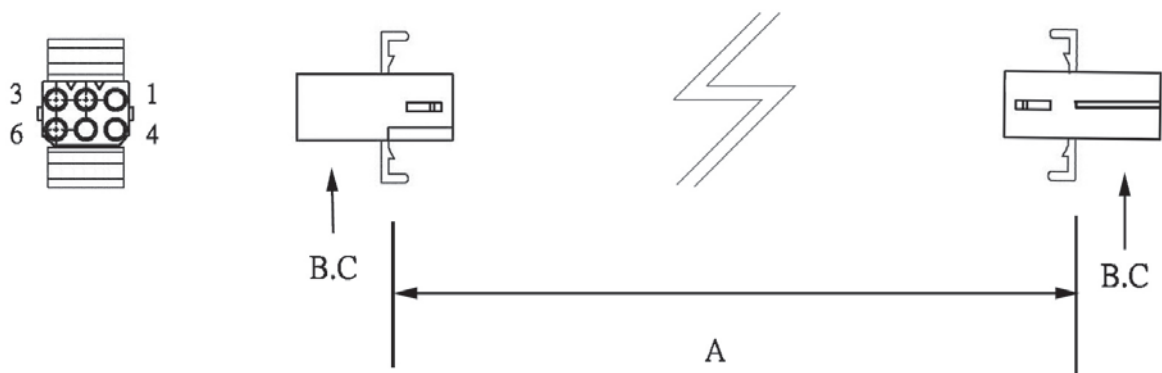
"503HT" DITTO, BUT HOUSING TO 3MM TINNED END

2. NO. OF CONTACTS:

1X1, 1X2, 1X3, 1X4, 1X5, 2X2, 2X3, 3X3, 3X4, 3X5

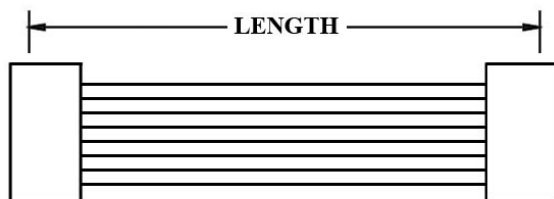
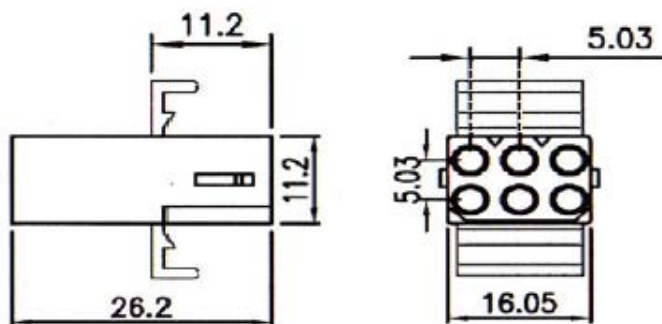
3. LENGTH IN CM (CENTIMETERS)

WIRE HARNESS CABLE WITH 2*5.03MM PITCH WIRE-TO-WIRE CRIMPED HOUSINGS (F2)

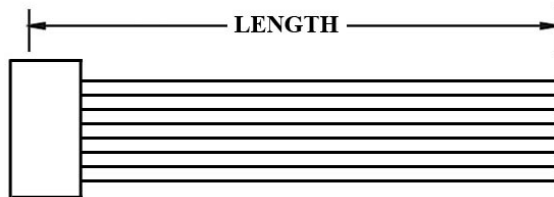


K503HF2X3

5.03MM PITCH HOUSING P/N 503HF-2X3HW



K503H1



K503HT

ORDERING INFORMATION:

P/N K xxxxxx xxx - xx C M

1. HOUSING TYPE AT 2 ENDS:

"503HF" 5.03MM PITCH Ø2.36MM WIRE HOUSING TO HOUSING (WIRING 1:1)

"503H1" DITTO, BUT SAME DIRECTION OF CONTACTS AT 2 ENDS (WIRING 1:N)

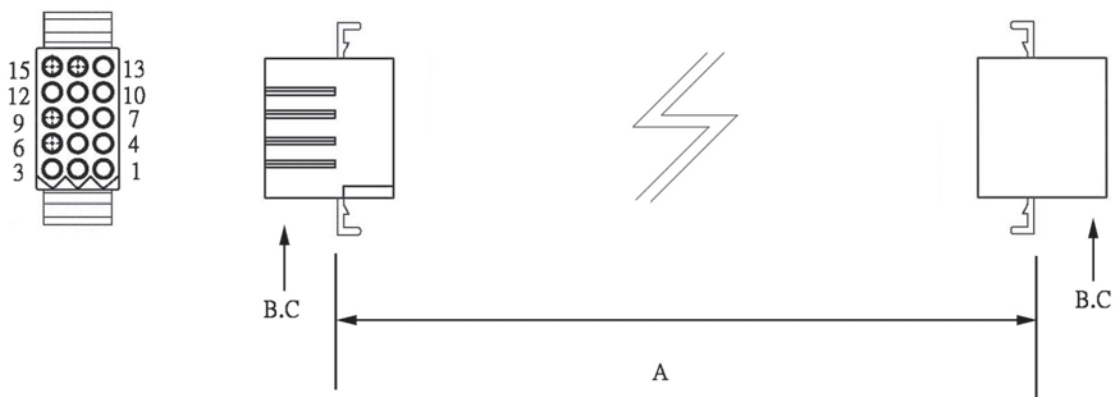
"503HT" DITTO, BUT HOUSING TO 3MM TINNED END

2. NO. OF CONTACTS:

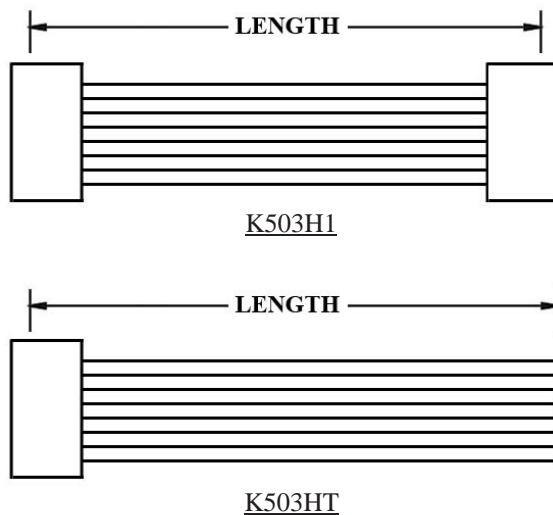
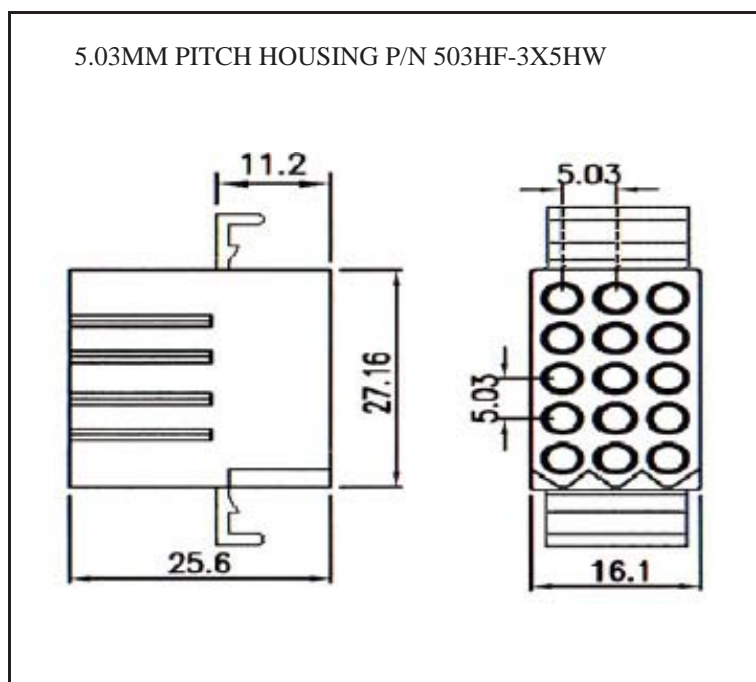
1X1, 1X2, 1X3, 1X4, 1X5, 2X2, 2X3, 3X3, 3X4, 3X5

3. LENGTH IN CM (CENTIMETERS)

WIRE HARNESS CABLE WITH 2*5.03MM PITCH WIRE-TO-WIRE CRIMPED HOUSINGS (F3)



K503HF3X5



ORDERING INFORMATION:

P/N K xxxxxx xxx - xx C M

1 2 3

1. HOUSING TYPE AT 2 ENDS:

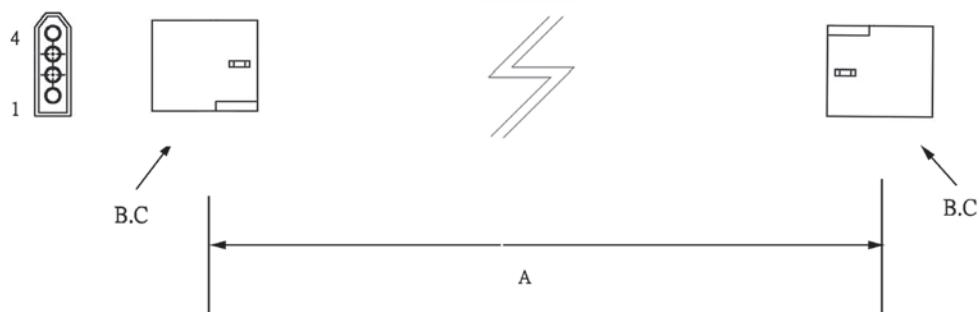
- "503HF" 5.03MM PITCH Ø2.36MM WIRE HOUSING TO HOUSING (WIRING 1:1)
- "503H1" DITTO, BUT SAME DIRECTION OF CONTACTS AT 2 ENDS (WIRING 1:N)
- "503HT" DITTO, BUT HOUSING TO 3MM TINNED END

2. NO. OF CONTACTS:

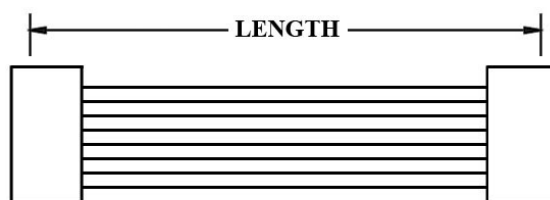
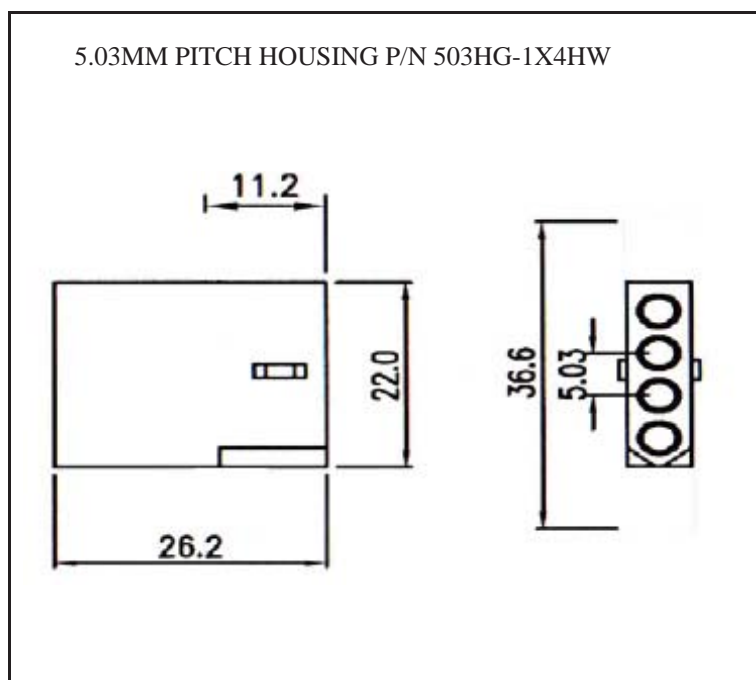
- 1X1, 1X2, 1X3, 1X4, 1X5, 2X2, 2X3, 3X3, 3X4, 3X5

3. LENGTH IN CM (CENTIMETERS)

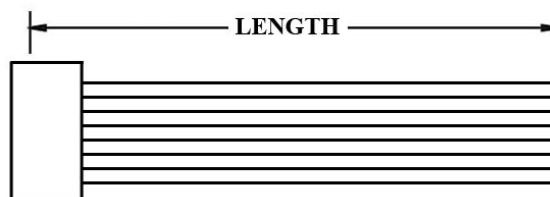
WIRE HARNESS CABLE WITH 2*5.03MM PITCH WIRE-TO-WIRE CRIMPED HOUSINGS (F4)



K503HG1X4



K503H2



K503HU

ORDERING INFORMATION:

P/N K 1 2 3 XXXXXX - XX C M

1. HOUSING TYPE AT 2 ENDS:

"503HG" 5.03MM PITCH Ø2.36MM WIRE HOUSING TO HOUSING (WIRING 1:1)

"503H2" DITTO, BUT SAME DIRECTION OF CONTACTS AT 2 ENDS (WIRING 1:N)

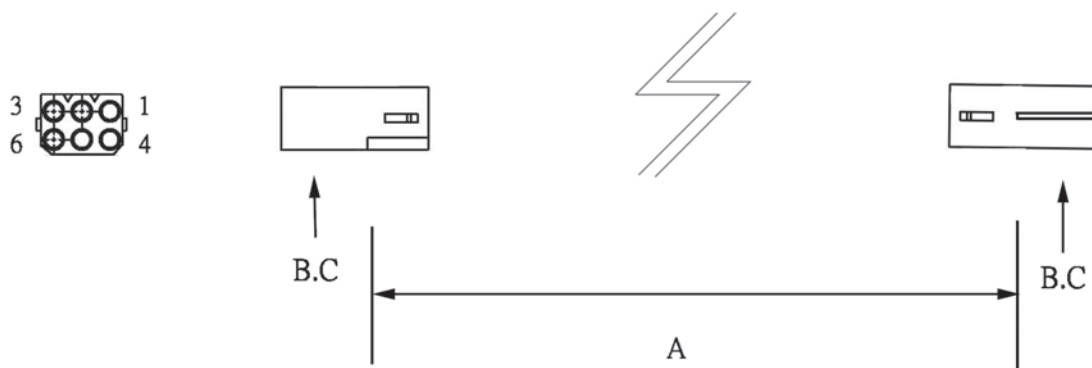
"503HU" DITTO, BUT HOUSING TO 3MM TINNED END

2. NO. OF CONTACTS:

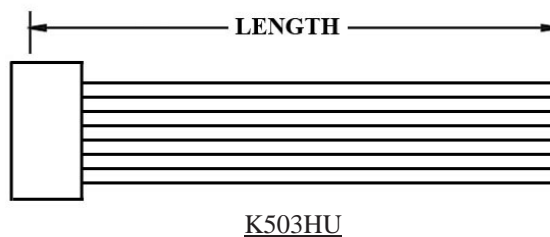
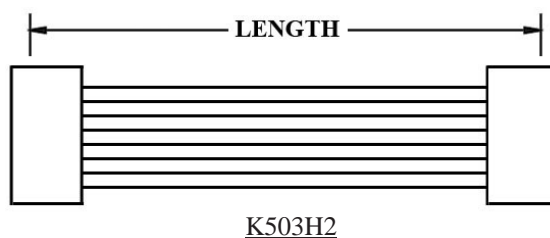
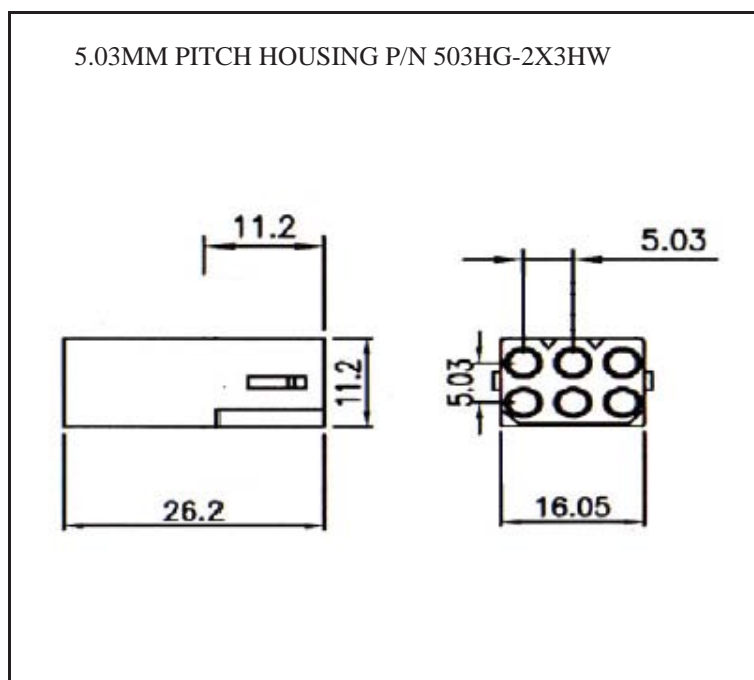
1X1, 1X2, 1X3, 1X4, 1X5, 2X2, 2X3, 3X3, 3X4, 3X5

3. LENGTH IN CM (CENTIMETERS)

WIRE HARNESS CABLE WITH 2*5.03MM PITCH WIRE-TO-WIRE CRIMPED HOUSINGS (F5)



K503HG2X3



ORDERING INFORMATION:

P/N **K** **x****x****x****x****x****x** - **x****x** C M

1. HOUSING TYPE AT 2 ENDS:

"503HG" 5.03MM PITCH Ø2.36MM WIRE HOUSING TO HOUSING (WIRING 1:1)

"503H2" DITTO, BUT SAME DIRECTION OF CONTACTS AT 2 ENDS (WIRING 1:N)

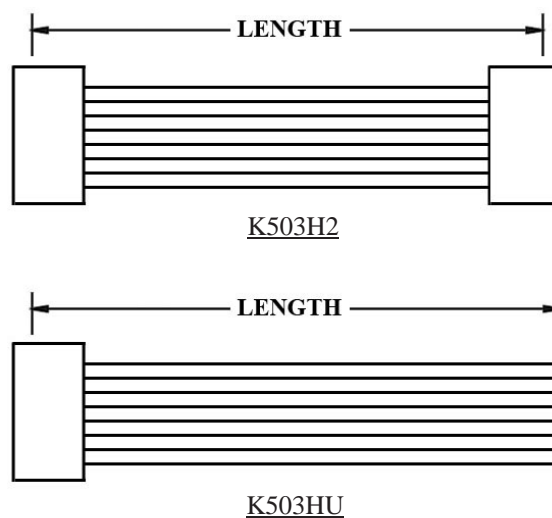
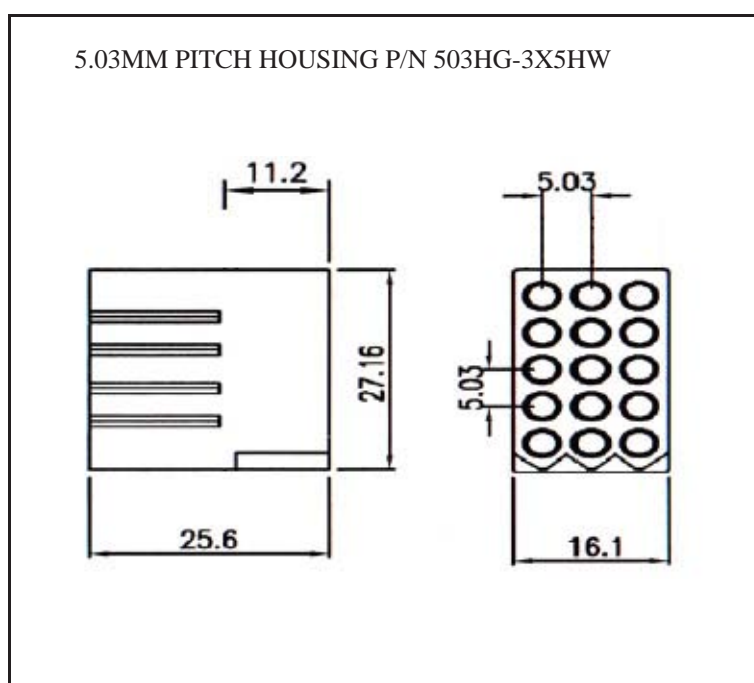
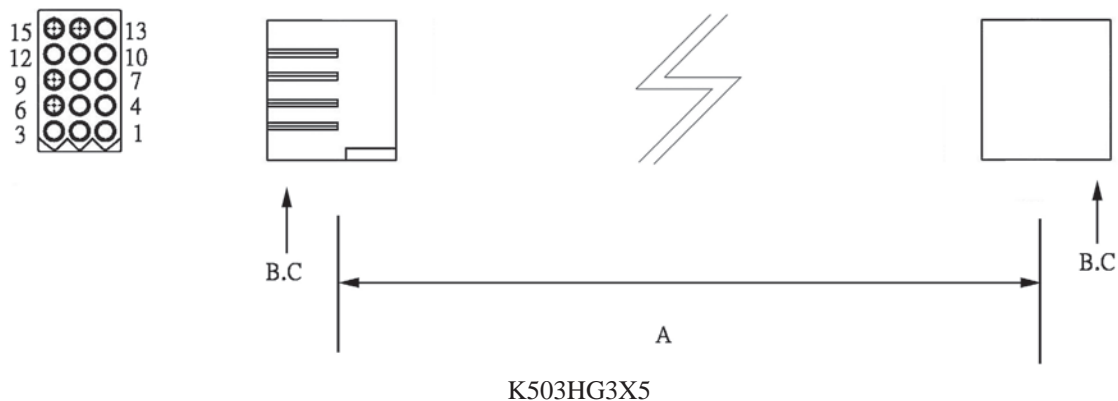
"503HU" DITTO, BUT HOUSING TO 3MM TINNED END

2. NO. OF CONTACTS:

1X1, 1X2, 1X3, 1X4, 1X5, 2X2, 2X3, 3X3, 3X4, 3X5

3. LENGTH IN CM (CENTIMETERS)

WIRE HARNESS CABLE WITH 2*5.03MM PITCH WIRE-TO-WIRE CRIMPED HOUSINGS (F6)



ORDERING INFORMATION:

P/N K xxxxxx xx - xx C M

1 2 3

1. HOUSING TYPE AT 2 ENDS:

"503HG" 5.03MM PITCH Ø2.36MM WIRE HOUSING TO HOUSING (WIRING 1:1)

"503H2" DITTO, BUT SAME DIRECTION OF CONTACTS AT 2 ENDS (WIRING 1:N)

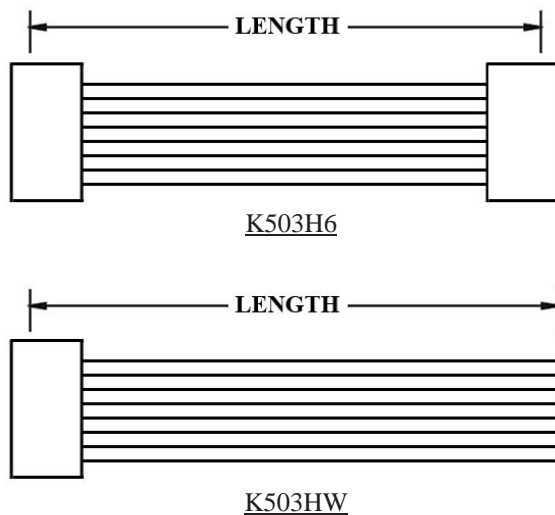
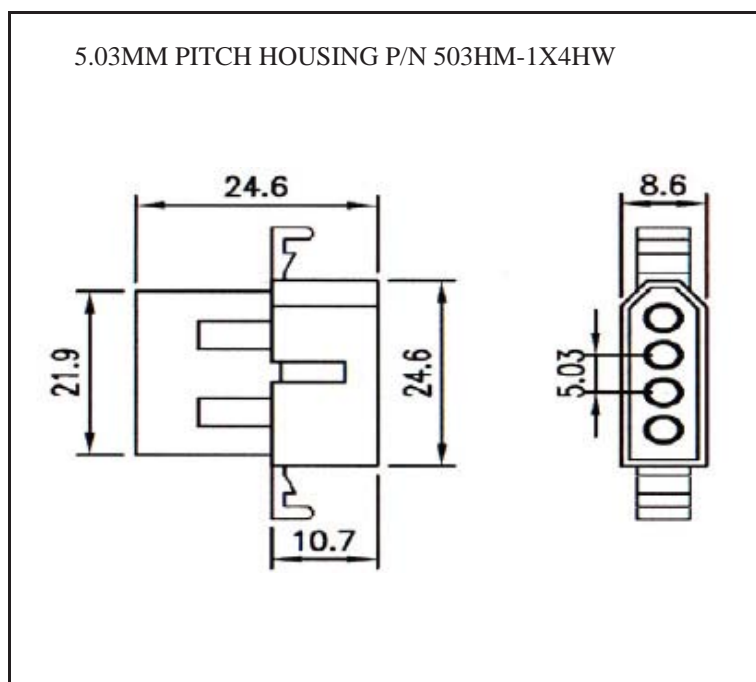
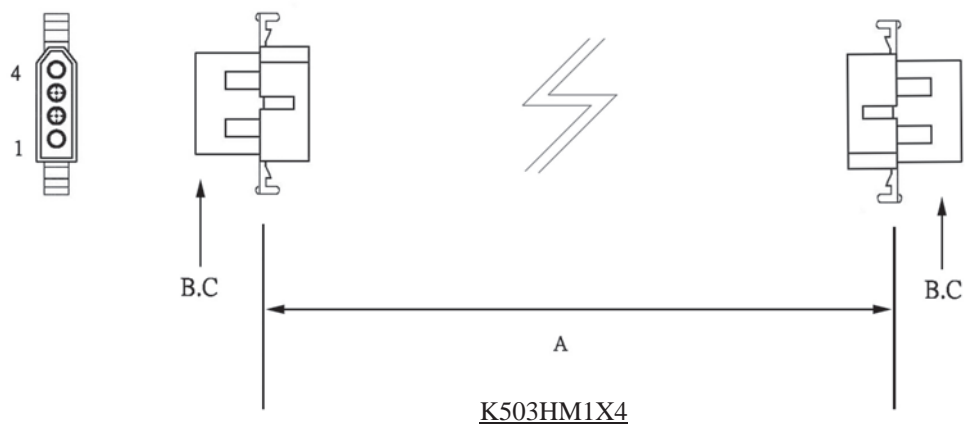
"503HU" DITTO, BUT HOUSING TO 3MM TINNED END

2. NO. OF CONTACTS:

1X1, 1X2, 1X3, 1X4, 1X5, 2X2, 2X3, 3X3, 3X4, 3X5

3. LENGTH IN CM (CENTIMETERS)

WIRE HARNESS CABLE WITH 2*5.03MM PITCH WIRE-TO-WIRE CRIMPED HOUSINGS (M1)



ORDERING INFORMATION:

P/N **K** 1 2 3 **C M**

1. HOUSING TYPE AT 2 ENDS:

"503HM" 5.03MM PITCH Ø2.36MM WIRE HOUSING TO HOUSING (WIRING 1:1)

"503H6" DITTO, BUT SAME DIRECTION OF CONTACTS AT 2 ENDS (WIRING 1:N)

"503HW" DITTO, BUT HOUSING TO 3MM TINNED END

2. NO. OF CONTACTS:

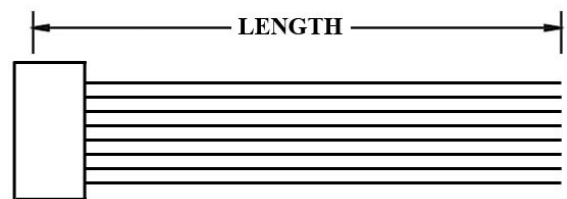
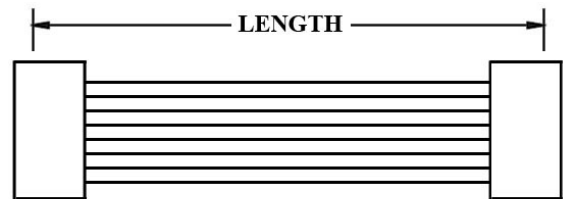
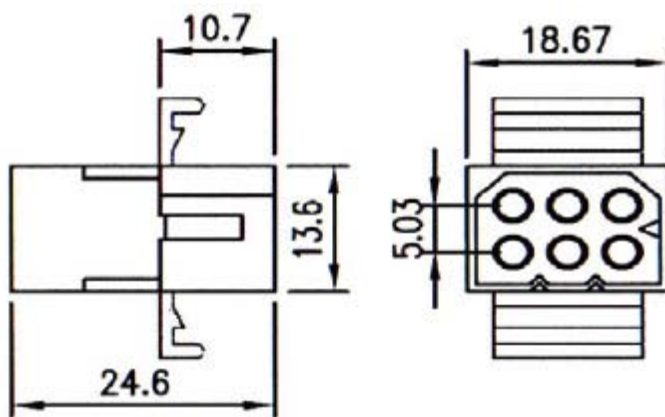
1X1, 1X2, 1X3, 1X4, 1X5, 2X2, 2X3, 3X3, 3X4, 3X5

3. LENGTH IN CM (CENTIMETERS)

WIRE HARNESS CABLE WITH 2*5.03MM PITCH WIRE-TO-WIRE CRIMPED HOUSINGS (M2)



5.03MM PITCH HOUSING P/N 503HM-2X3HW



ORDERING INFORMATION:

P/N K 1 2 3 XXXXXX - XX C M

1. HOUSING TYPE AT 2 ENDS:

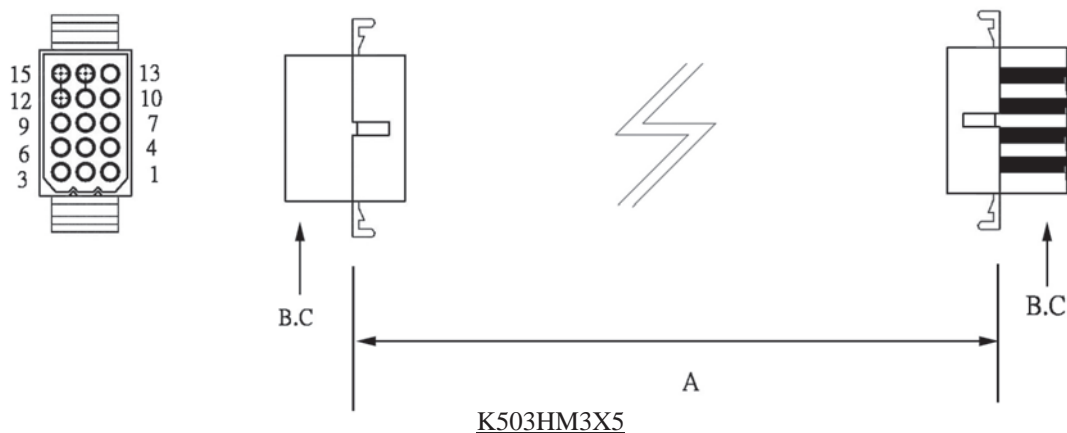
- "503HM" 5.03MM PITCH Ø2.36MM WIRE HOUSING TO HOUSING (WIRING 1:1)
- "503H6" DITTO, BUT SAME DIRECTION OF CONTACTS AT 2 ENDS (WIRING 1:N)
- "503HW" DITTO, BUT HOUSING TO 3MM TINNED END

2. NO. OF CONTACTS:

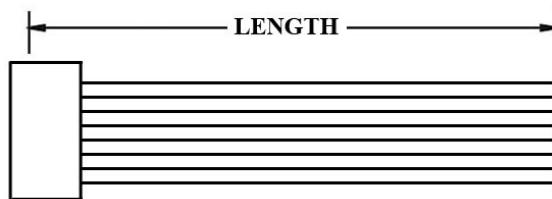
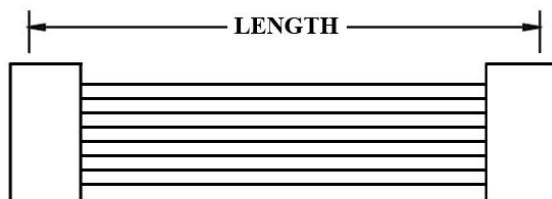
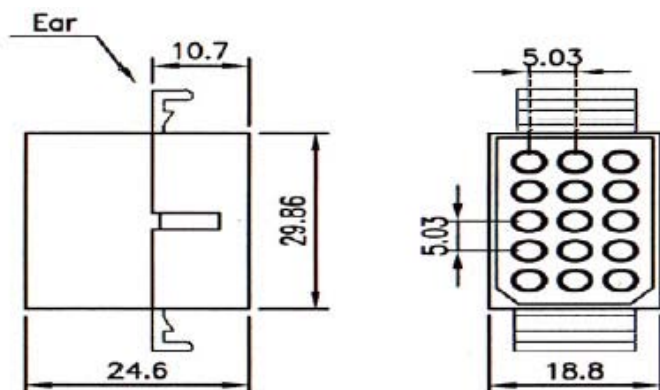
- 1X1, 1X2, 1X3, 1X4, 1X5, 2X2, 2X3, 3X3, 3X4, 3X5

3. LENGTH IN CM (CENTIMETERS)

WIRE HARNESS CABLE WITH 2*5.03MM PITCH WIRE-TO-WIRE CRIMPED HOUSINGS (M3)



5.03MM PITCH HOUSING P/N 503HM-3X5HW



ORDERING INFORMATION:

P/N K xxxxxx xxx - xx C M

1 2 3

1. HOUSING TYPE AT 2 ENDS:

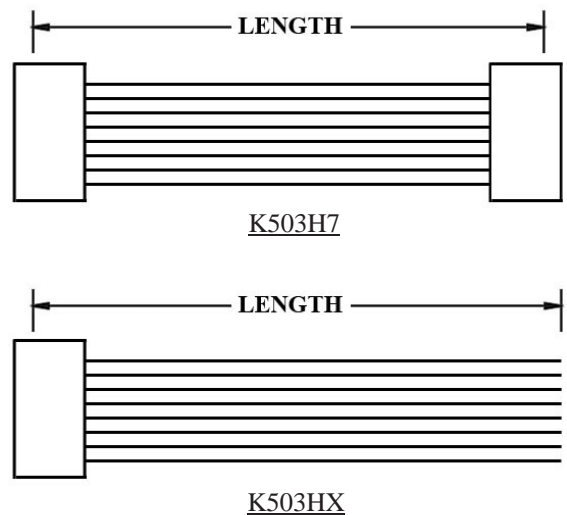
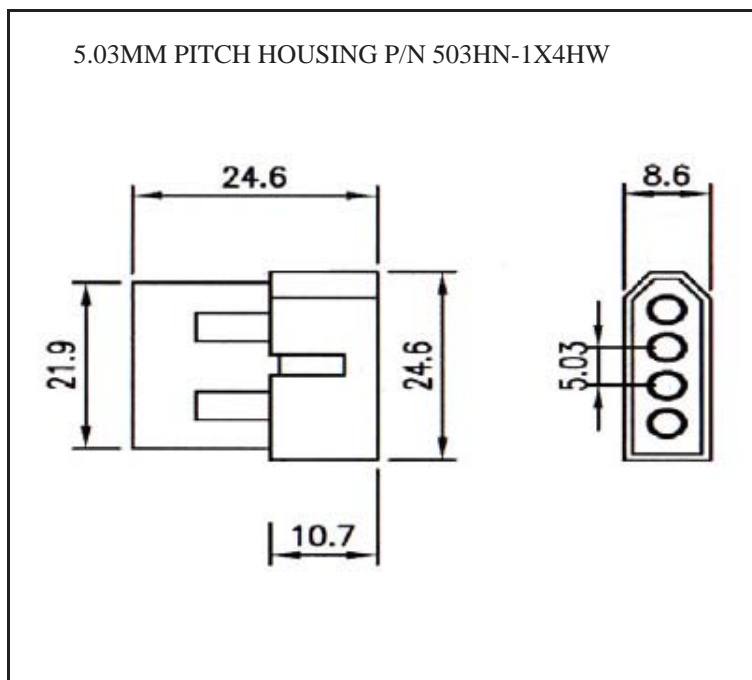
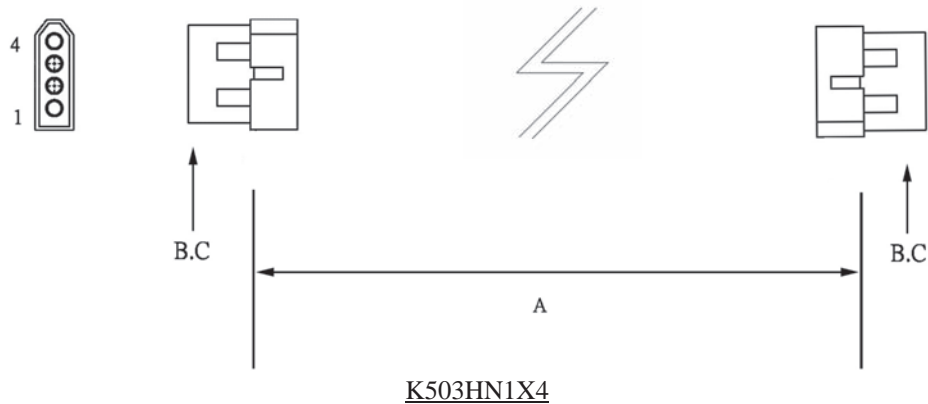
- "503HM" 5.03MM PITCH Ø2.36MM WIRE HOUSING TO HOUSING (WIRING 1:1)
- "503H6" DITTO, BUT SAME DIRECTION OF CONTACTS AT 2 ENDS (WIRING 1:N)
- "503HW" DITTO, BUT HOUSING TO 3MM TINNED END

2. NO. OF CONTACTS:

- 1X1, 1X2, 1X3, 1X4, 1X5, 2X2, 2X3, 3X3, 3X4, 3X5

3. LENGTH IN CM (CENTIMETERS)

WIRE HARNESS CABLE WITH 2*5.03MM PITCH WIRE-TO-WIRE CRIMPED HOUSINGS (M4)



ORDERING INFORMATION:

P/N K 1 1 1 1 1 1 - 1 1 C M

1. HOUSING TYPE AT 2 ENDS:

"503HN" 5.03MM PITCH Ø2.36MM WIRE HOUSING TO HOUSING (WIRING 1:1)

"503H7" DITTO, BUT SAME DIRECTION OF CONTACTS AT 2 ENDS (WIRING 1:N)

"503HX" DITTO, BUT HOUSING TO 3MM TINNED END

2. NO. OF CONTACTS:

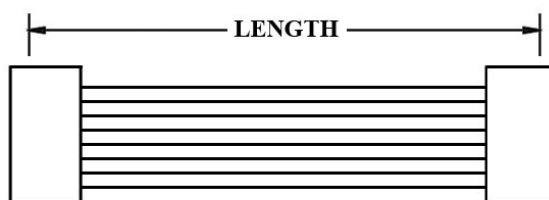
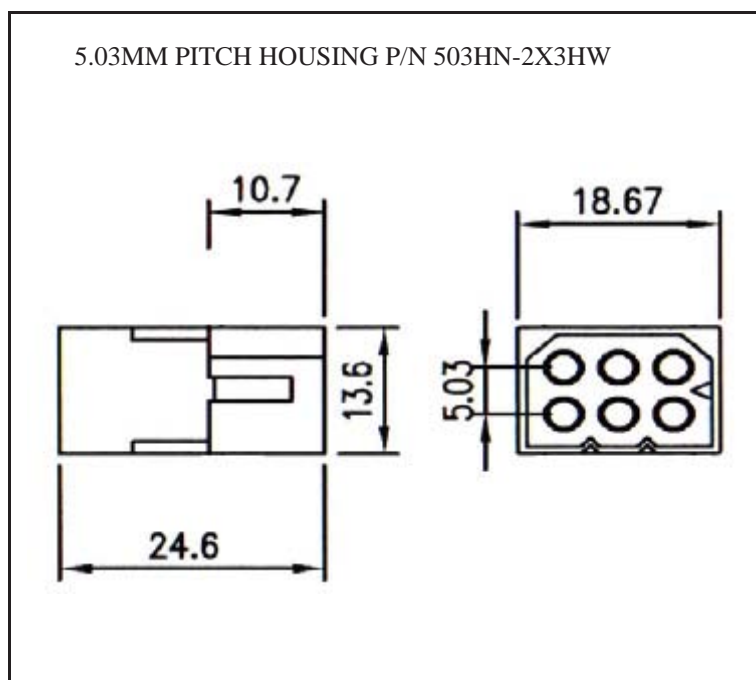
1X1, 1X2, 1X3, 1X4, 1X5, 2X2, 2X3, 3X3, 3X4, 3X5

3. LENGTH IN CM (CENTIMETERS)

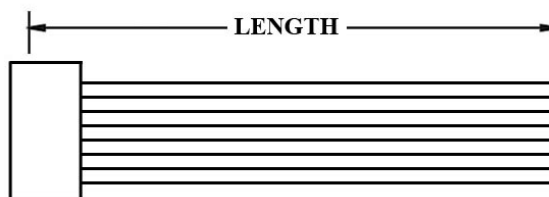
WIRE HARNESS CABLE WITH 2*5.03MM PITCH WIRE-TO-WIRE CRIMPED HOUSINGS (M5)



K503HN2X3



K503H7



K503HX

ORDERING INFORMATION:

P/N K 1 2 3 XXXXXX - XX C M

1. HOUSING TYPE AT 2 ENDS:

"503HN" 5.03MM PITCH Ø2.36MM WIRE HOUSING TO HOUSING (WIRING 1:1)

"503H7" DITTO, BUT SAME DIRECTION OF CONTACTS AT 2 ENDS (WIRING 1:N)

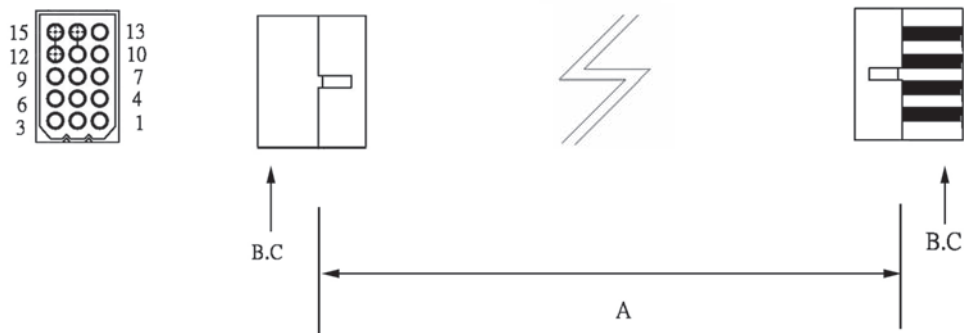
"503HX" DITTO, BUT HOUSING TO 3MM TINNED END

2. NO. OF CONTACTS:

1X1, 1X2, 1X3, 1X4, 1X5, 2X2, 2X3, 3X3, 3X4, 3X5

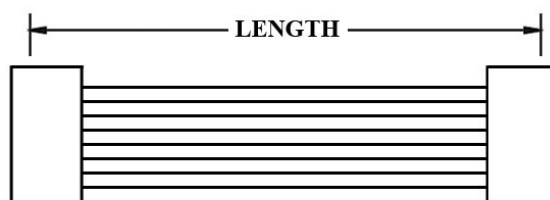
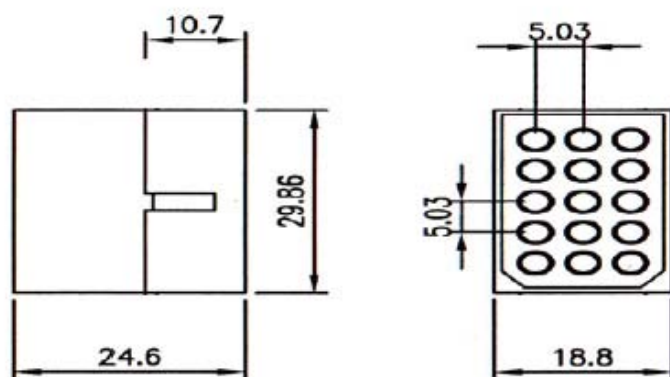
3. LENGTH IN CM (CENTIMETERS)

WIRE HARNESS CABLE WITH 2*5.03MM PITCH WIRE-TO-WIRE CRIMPED HOUSINGS (M6)

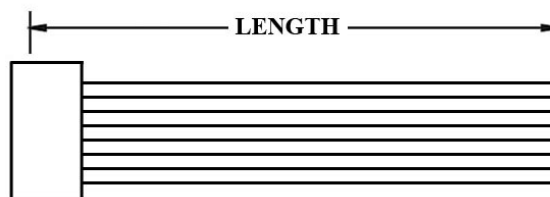


K503HN3X5

5.03MM PITCH HOUSING P/N 503HN-3X5HW



K503H7



K503HX

ORDERING INFORMATION:

P/N K 1 2 3 XXXXXX - XX C M

1. HOUSING TYPE AT 2 ENDS:

"503HN" 5.03MM PITCH Ø2.36MM WIRE HOUSING TO HOUSING (WIRING 1:1)

"503H7" DITTO, BUT SAME DIRECTION OF CONTACTS AT 2 ENDS (WIRING 1:N)

"503HX" DITTO, BUT HOUSING TO 3MM TINNED END

2. NO. OF CONTACTS:

1X1, 1X2, 1X3, 1X4, 1X5, 2X2, 2X3, 3X3, 3X4, 3X5

3. LENGTH IN CM (CENTIMETERS)