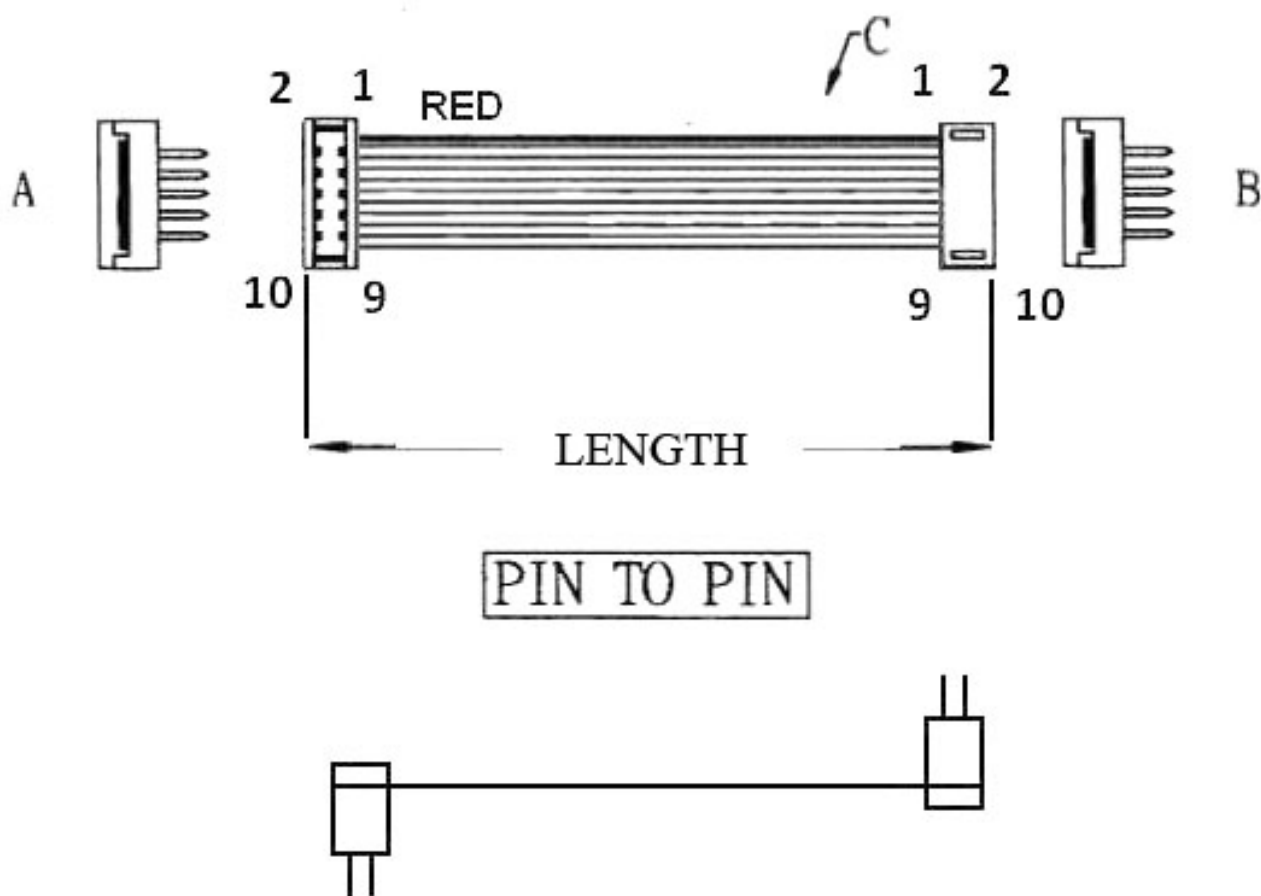


**1.27MM PITCH FLAT CABLE WITH
2* 2.54MM PITCH DIP PLUGS (H=7.6MM) (H1)**



ORDERING INFORMATION:

P/N **KA** **xx** **DD** - **xx** **CM** **x**
1 2 3 4 5

1. FLAT CABLE TYPE:

"KA" 1.27MM AWG28 UL2651 VW-1
PVC INSULATION GRAY

2. NO. OF CONTACTS:

06~64

3. CONNECTORS AT TWO ENDS:

"DD" 2.54MM DIP PLUG
TO 2.54MM DIP PLUG

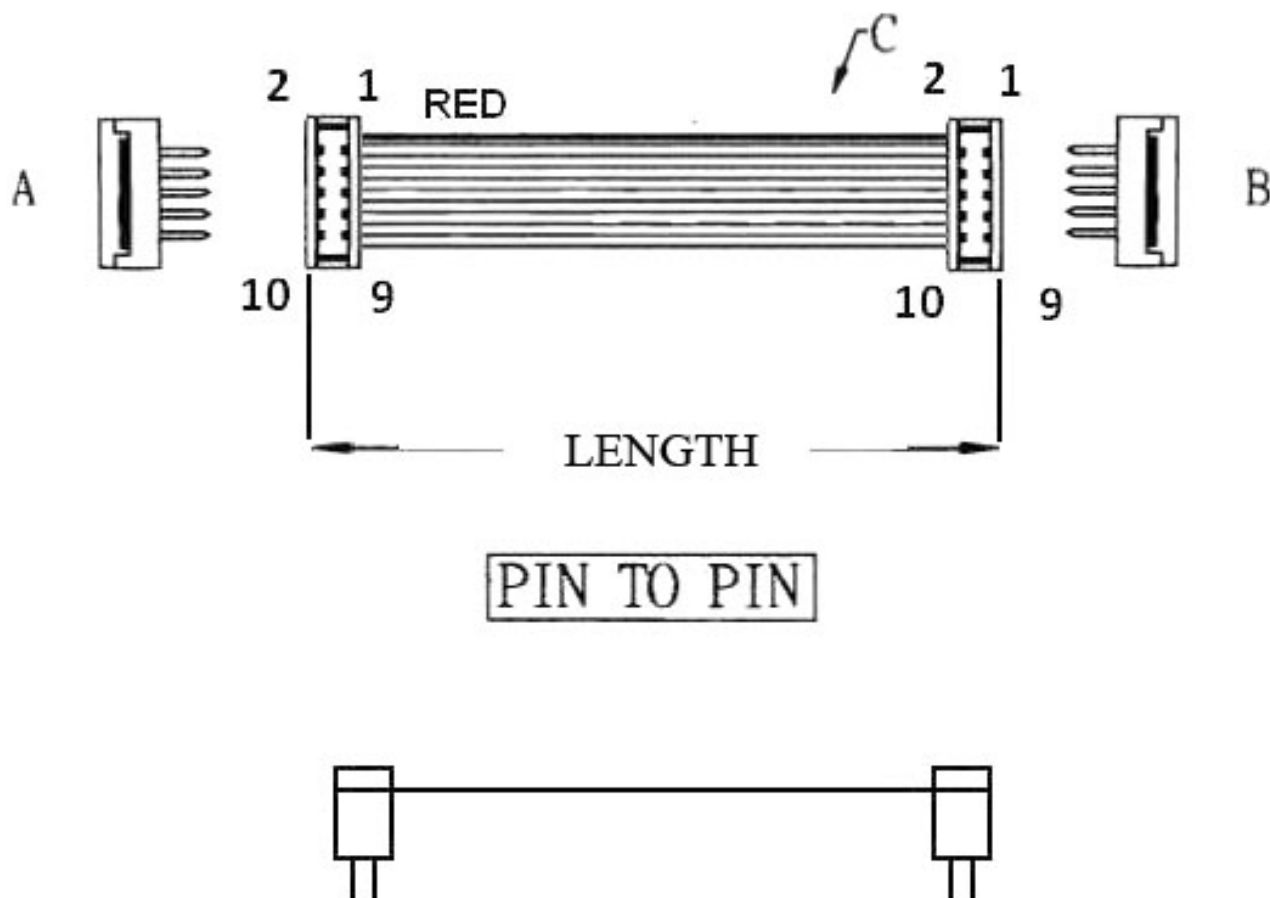
4. LENGTH IN CM (CENTIMETERS)

5. COLOR OF TWO IDC CONNECTORS:

"B" BLACK

"A" GRAY

**1.27MM PITCH FLAT CABLE WITH
2* 2.54MM PITCH DIP PLUGS (H=7.6MM) (H2)**



ORDERING INFORMATION:

P/N **KA** **xx** **DP** - **xx** **CM** **x**

1 2 3 4 5

1. FLAT CABLE TYPE:

"KA" 1.27MM AWG28 UL2651 VW-1
PVC INSULATION GRAY

2. NO. OF CONTACTS:

06~64

3. CONNECTORS AT TWO ENDS:

"DP" 2.54MM DIP PLUG
TO 2.54MM DIP PLUG

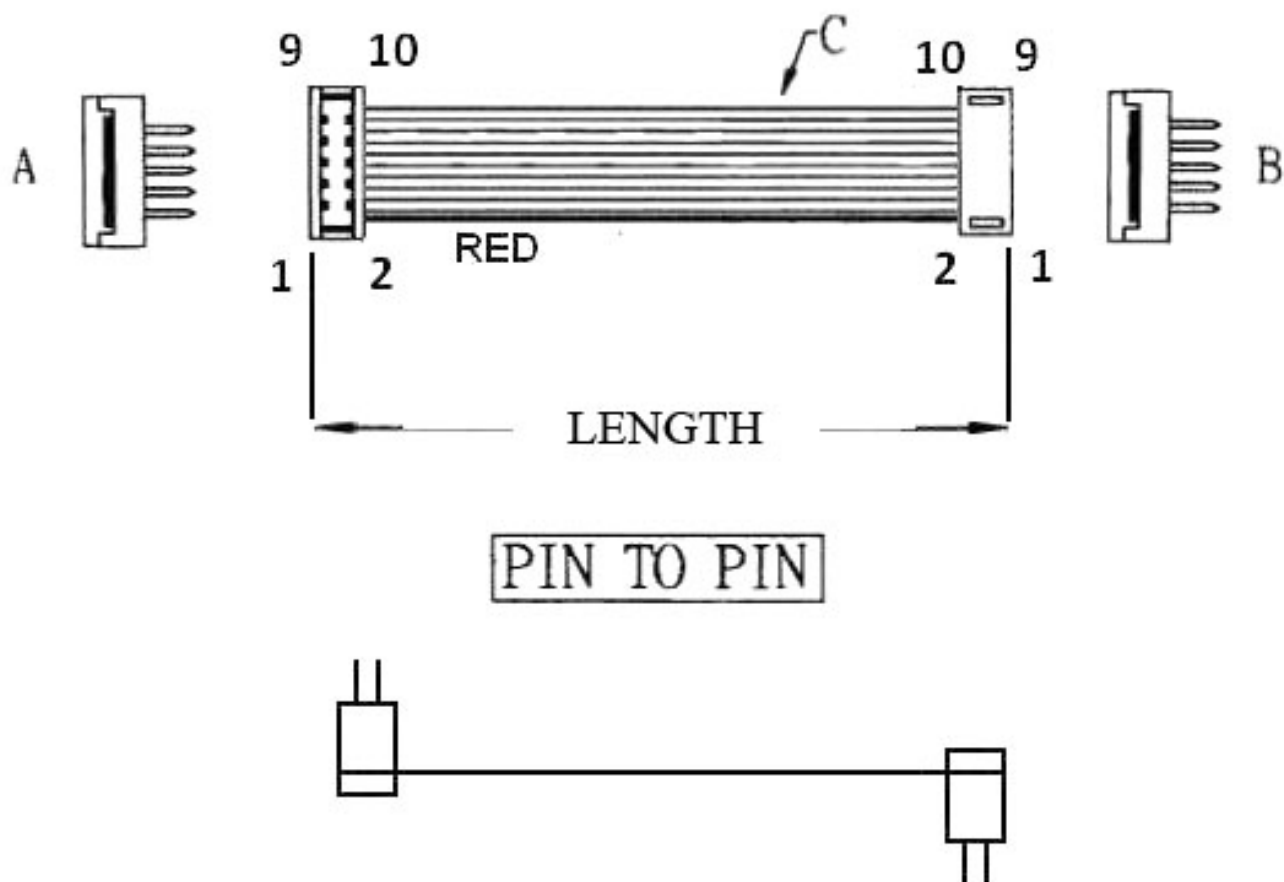
4. LENGTH IN CM (CENTIMETERS)

5. COLOR OF TWO IDC CONNECTORS:

"B" BLACK

"A" GRAY

**1.27MM PITCH FLAT CABLE WITH
2* 2.54MM PITCH DIP PLUGS (H=7.6MM) (H3)**



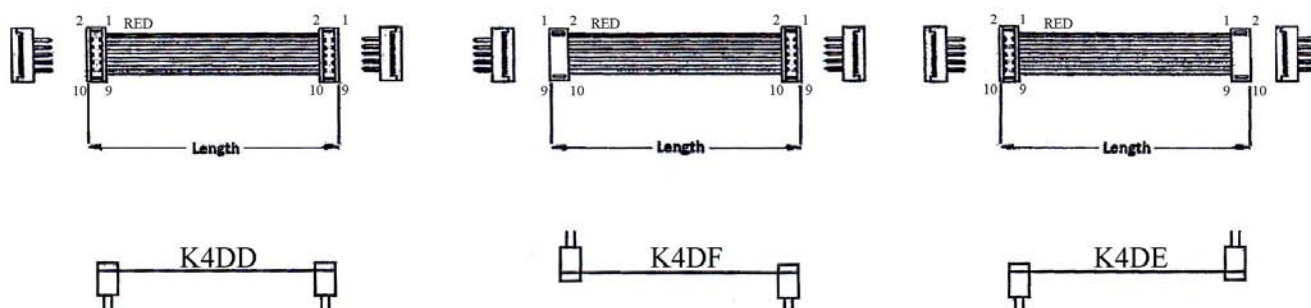
ORDERING INFORMATION:

P/N **KA** **xx** **PP** - **xx** **CM** **x**

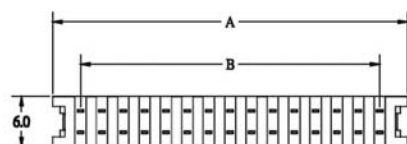
1 2 3 4 5

1. FLAT CABLE TYPE:
"KA" 1.27MM AWG28 UL2651 VW-1
PVC INSULATION GRAY
2. NO. OF CONTACTS:
06~64
3. CONNECTORS AT TWO ENDS:
"PP" 2.54MM DIP PLUG
TO 2.54MM DIP PLUG
4. LENGTH IN CM (CENTIMETERS)
5. COLOR OF TWO IDC CONNECTORS:
"B" BLACK
"A" GRAY

1.27MM PITCH FLAT CABLE WITH 2* 2.54MM DIP PLUGS (H=5.4MM) (H4)

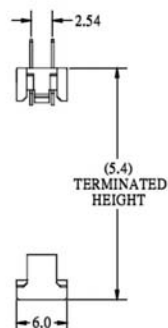
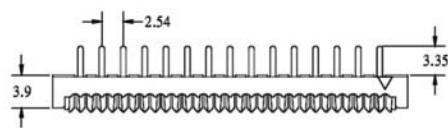


2.54MM PITCH SUPER LOW PROFILE DIP PLUG H=5.4MM

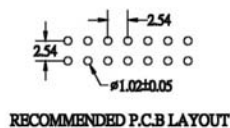


$$A = B + 6.64$$

$$B = 2.54 * \text{POSITIONS} / 2 - 2.54$$



NO. OF CONTACTS:
006, 008, 010, 012, 014,
016, 020, 024, 026, 030,
032, 034, 040, 050, 060,
064



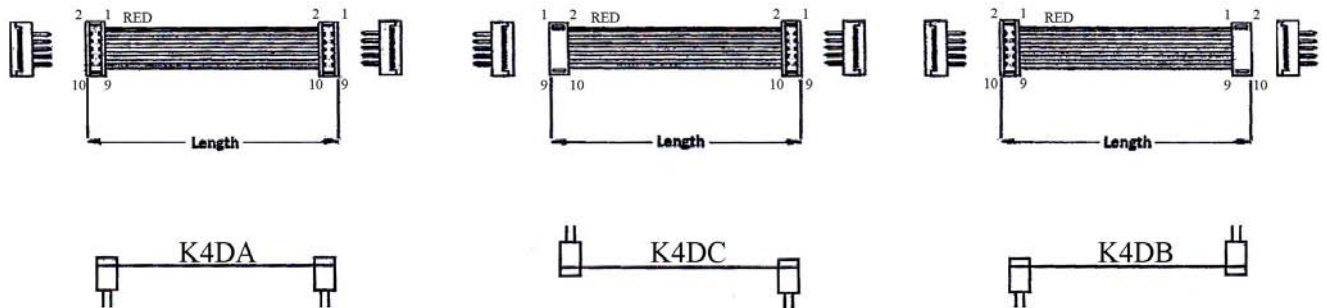
ORDERING INFORMATION:

P/N **K** **x x x x x x** **x x** **C M** **x**
1 2 3 4

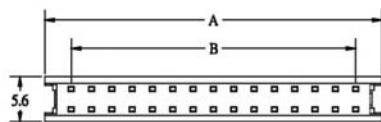
1. CONSTRUCTION TYPE:
4DD, 4DE, 4DF
2. NO. OF CONTACTS:
006~064
3. LENGTH IN CM (CENTIMETERS)
4. COLOR OF TWO IDC CONNECTORS:
"B" BLACK
"A" GRAY

NOTE: DIP PLUG CAN'T BE SUPPLIED ALONE.

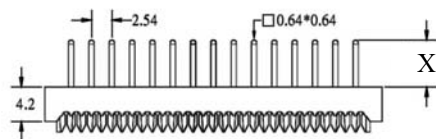
1.27MM PITCH FLAT CABLE WITH 2* 2.54MM DIP PLUGS (H=6.0MM) (H5)



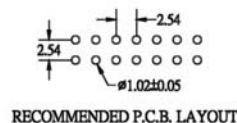
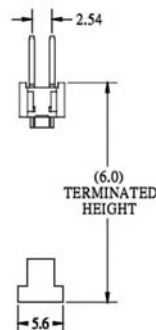
2.54MM PITCH DIP PLUG WITH 0.64MM SQUARE TAIL H=6.0MM



$A = B + 6.64$
 $B = 2.54 * \text{POSITIONS} / 2 - 2.54$
 $X = \text{PIN LENGTH}$



NO. OF CONTACTS:
 006, 008, 010, 012, 014,
 016, 020, 024, 026, 030,
 032, 034, 040, 050, 060,
 064



ORDERING INFORMATION:

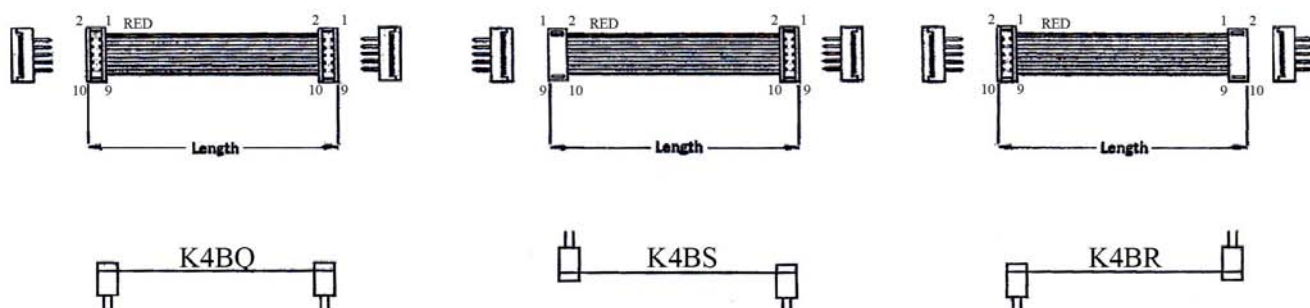
P/N **K** **x x x x x x** - **x x** **C M** **B** **x**
 1 2 3 4 5

1. CONSTRUCTION TYPE:
4DA, 4DB, 4DC
2. NO. OF CONTACTS:
006~064
3. LENGTH IN CM (CENTIMETERS)
4. COLOR OF TWO IDC CONNECTORS:
"B" BLACK

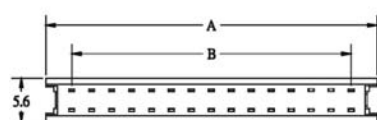
5. PIN LENGTH OF DIP PLUG:
"6" A= 5.85MM (STANDARD)
"T" B= 12.0MM

NOTE: DIP PLUG CAN'T BE SUPPLIED ALONE.

1.27MM PITCH FLAT CABLE WITH 2* 2.54MM DIP PLUGS (H=6.0MM) (H6)

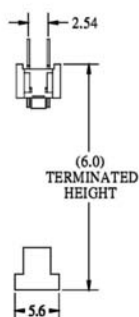
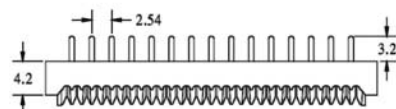


2.54MM PITCH DIP PLUG H=6.0MM

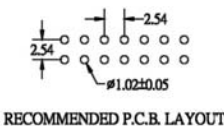


$$A = B + 6.64$$

$$B = 2.54 * \text{POSITIONS} / 2 - 2.54$$



NO. OF CONTACTS:
006, 008, 010, 012, 014,
016, 020, 024, 026, 030,
032, 034, 040, 050, 060,
064



RECOMMENDED P.C.B. LAYOUT

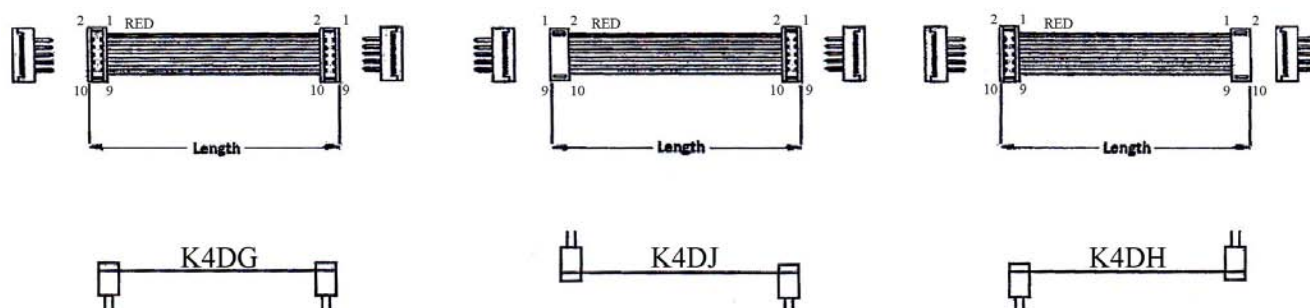
ORDERING INFORMATION:

P/N K 1 2 3 4 C M x

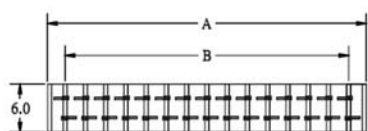
1. CONSTRUCTION TYPE:
4BQ, 4BR, 4BS
2. NO. OF CONTACTS:
006~064
3. LENGTH IN CM (CENTIMETERS)
4. COLOR OF TWO IDC CONNECTORS:
"B" BLACK
"A" GRAY

NOTE: DIP PLUG CAN'T BE SUPPLIED ALONE.

1.27MM PITCH FLAT CABLE WITH 2* 2.54MM SHRUNK DIP PLUGS (H=6.1MM) (H7)

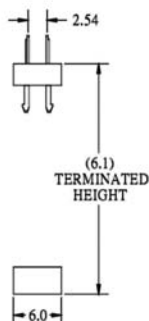
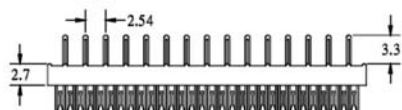


2.54MM PITCH SHRUNK DIP PLUG H=6.1MM

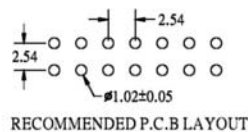


$$A = B + 4.40$$

$$B = 2.54 * \text{POSITIONS} / 2 - 2.54$$



NO. OF CONTACTS:
006, 008, 010, 012, 014,
016, 020, 024, 026, 028,
030, 034, 040, 050, 060,
064



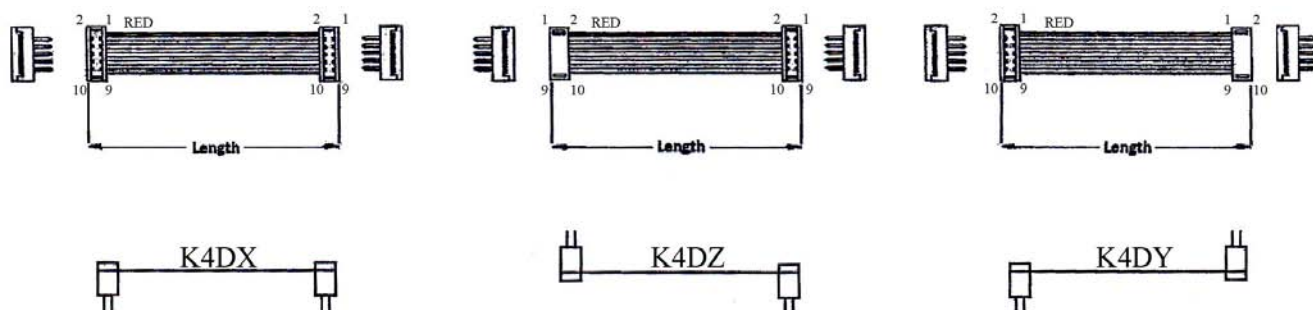
ORDERING INFORMATION:

P/N **K** **x x x x x x** - **x x** **C M B**

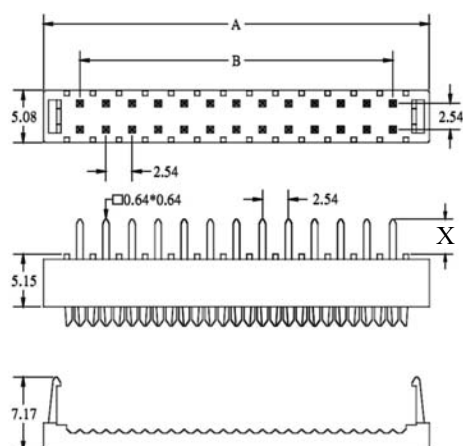
1. CONSTRUCTION TYPE:
4DG, 4DH, 4DJ
2. NO. OF CONTACTS:
006~064
3. LENGTH IN CM (CENTIMETERS)
4. COLOR OF TWO IDC CONNECTORS:
"B" BLACK

NOTE: DIP PLUG CAN'T BE SUPPLIED ALONE.

1.27MM PITCH FLAT CABLE WITH 2* 2.54MM DIP PLUGS WITH 0.64MM SQUARE SOLDER TAIL (H=7.85MM) (H8)

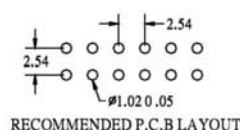
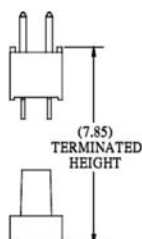


2.54MM PITCH DIP PLUG WITH 0.64MM SQUARE SOLDER TAIL H=7.85MM



A=B+7.11
B=2.54*POSITIONS/2-2.54
X=PIN LENGTH

NO. OF CONTACTS:
006, 008, 010, 012, 014,
016, 020, 024, 026, 030,
034, 040, 050, 060, 064



ORDERING INFORMATION:

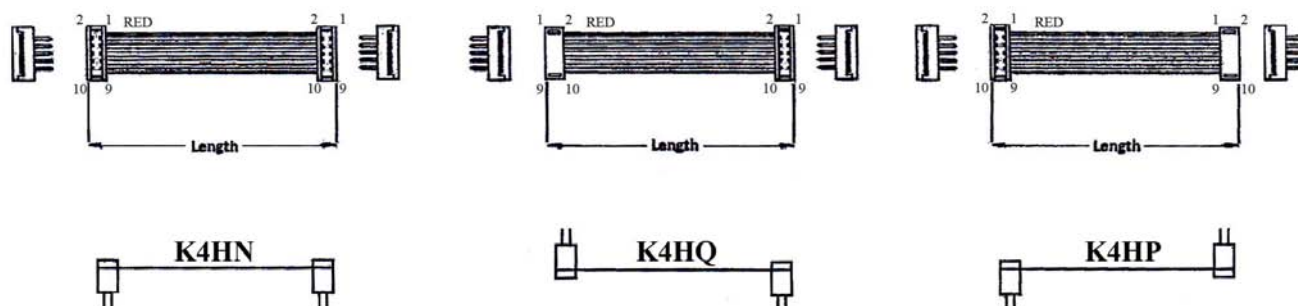
P/N **K** **x x x x x x** **x x** **C M** **B** **x**
 1 2 3 4 5

1. CONSTRUCTION TYPE:
4DX, 4DY, 4DZ
2. NO. OF CONTACTS:
006~064
3. LENGTH IN CM (CENTIMETERS)
4. COLOR OF TWO IDC CONNECTORS:
"B" BLACK

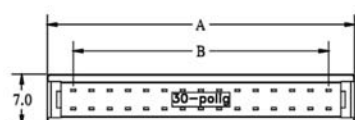
5. PIN LENGTH OF DIP PLUG:
"3" X= 3.10MM (STANDARD)
"6" X= 5.95MM

NOTE: DIP PLUG CAN'T BE SUPPLIED ALONE.

1.27MM PITCH FLAT CABLE WITH 2* 2.54MM DIP PLUGS (H=10.77MM) (H9)

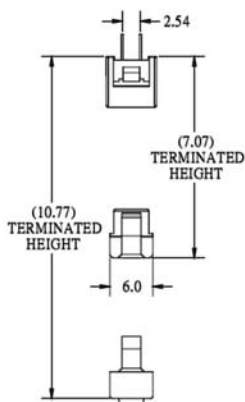
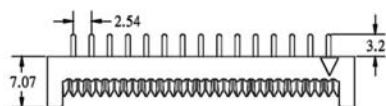


2.54MM PITCH DIP PLUG WITH STRAIN RELIEF DIP=3.2MM

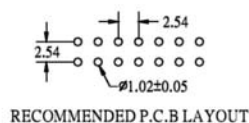


$$A = B + 7.24$$

$$B = 2.54 * \text{POSITIONS} / 2 - 2.54$$



NO. OF CONTACTS:
006, 008, 010, 012, 014,
016, 020, 024, 026, 028,
030, 034, 040, 050, 060,
064



ORDERING INFORMATION:

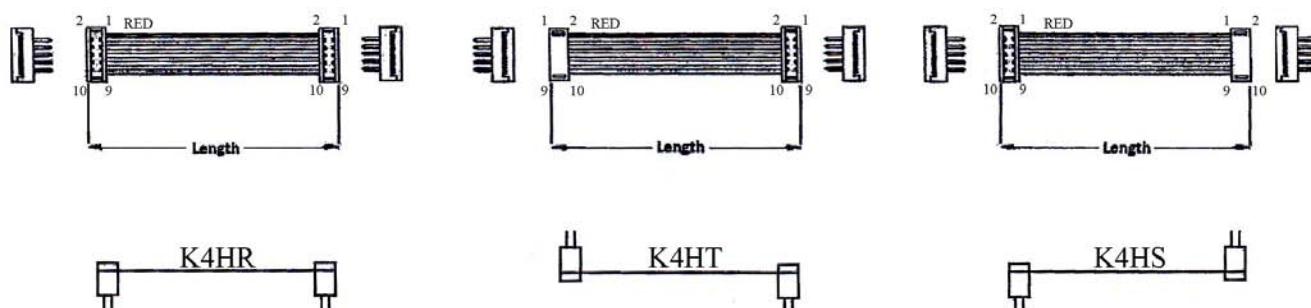
P/N **K** **x x x x x x** - **x x** **C M** **B**

1 2 3 4

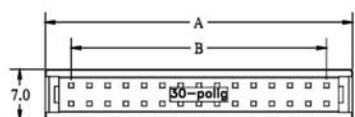
1. CONSTRUCTION TYPE:
4HN, 4HP, 4HQ
2. NO. OF CONTACTS:
006~064
3. LENGTH IN CM (CENTIMETERS)
4. COLOR OF TWO IDC CONNECTORS:
"B" BLACK

NOTE: DIP PLUG CAN'T BE SUPPLIED ALONE.

1.27MM PITCH FLAT CABLE WITH 2* 2.54MM DIP PLUGS (H=10.77MM) (H10)



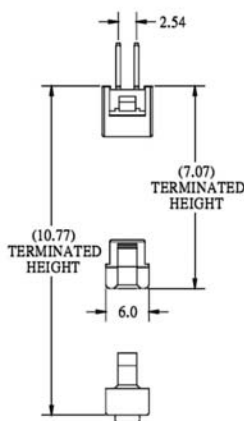
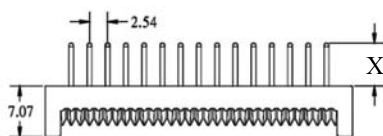
2.54MM DIP PLUG WITH STRAIN RELIEF & 0.64MM SQUARE TAIL DIP=6.0MM



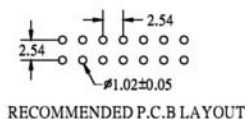
$$A = B + 7.24$$

$$B = 2.54 * \text{POSITIONS} / 2 - 2.54$$

$$X = \text{PIN LENGTH}$$



NO. OF CONTACTS:
006, 008, 010, 012, 014,
016, 020, 024, 026, 028,
030, 034, 040, 050, 060,
064



RECOMMENDED P.C.B LAYOUT

ORDERING INFORMATION:

P/N **K** **x x x x x x** - **x x** **C M** **B** **x**
1 2 3 4 5

- CONSTRUCTION TYPE:
4HR, 4HS, 4HT
- NO. OF CONTACTS:
006~064
- LENGTH IN CM (CENTIMETERS)
- COLOR OF TWO IDC CONNECTORS:
"B" BLACK

- PIN LENGTH OF DIP PLUG:
"6" X= 6.0MM (STANDARD)
"T" X= 12.1MM

NOTE: DIP PLUG CAN'T BE SUPPLIED ALONE.