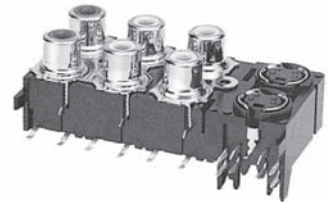
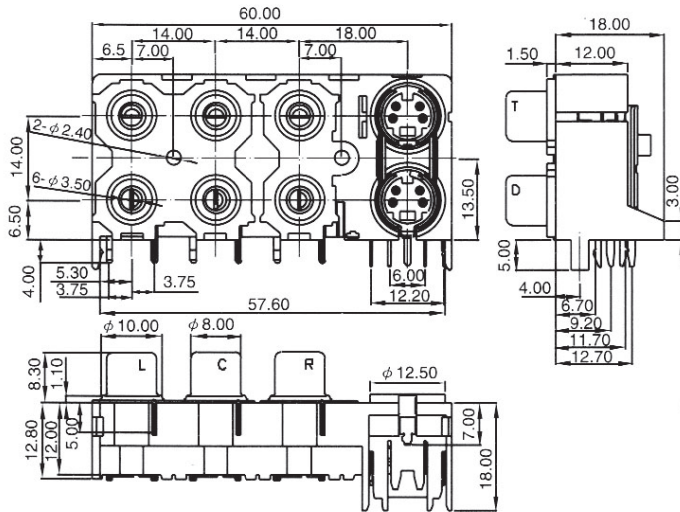


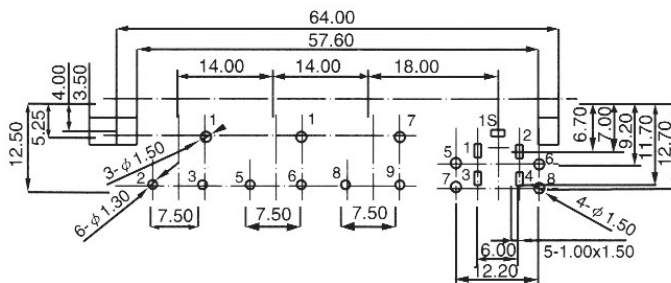
## EIGHT PORT RCA JACK (1)

### Dimension (m/m)

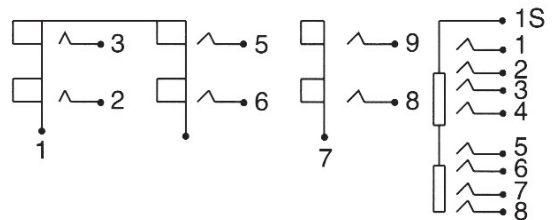


7708\*\***-01**

### Pin Hole Layout (Jack Bottom View)



### Schematic Code



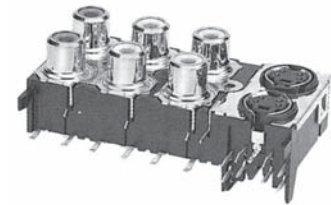
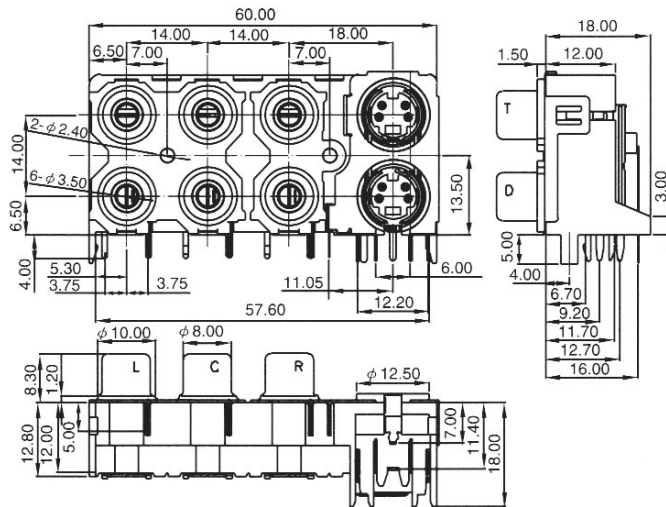
## ORDERING INFORMATION:

P/N 7708  $\frac{xx}{12} - \frac{xxxx}{3456}$

- TERMINAL FINISH:  
"S" SILVER PLATED (STANDARD)  
"G" GOLD FLASH PLATED
- RCA BUSHING FINISH:  
"N" NICKEL PLATED (STANDARD)  
"G" GOLD FLASH PLATED
- JACK CODE:  
01 (WITH 4P MINI DIN SOCKET)
- RCA SCHEMATIC CODE:  
"0" SEE DRAWING !
- NO. OF MINI DIN CONTACTS:  
4
- RCA INSULATOR COLORS:  
(ARRANGEMENT: L → C → R)  
"B" BLACK      "A" GRAY  
"R" RED        "O" ORANGE  
"W" WHITE     "C" BROWN  
"Y" YELLOW  
"U" BLUE  
"N" GREEN

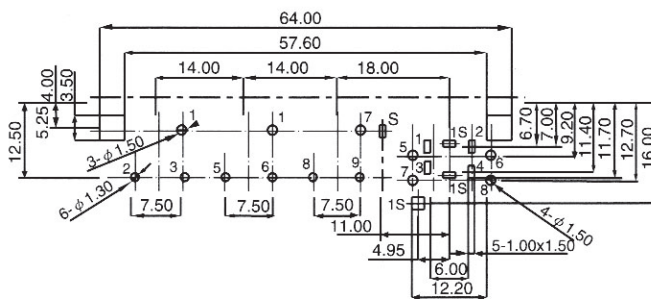
## EIGHT PORT RCA JACK (2)

### Dimension (m/m)

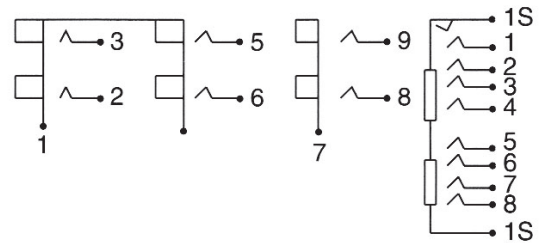


7708\*\* -02

### Pin Hole Layout (Jack Bottom View)



### Schematic Code



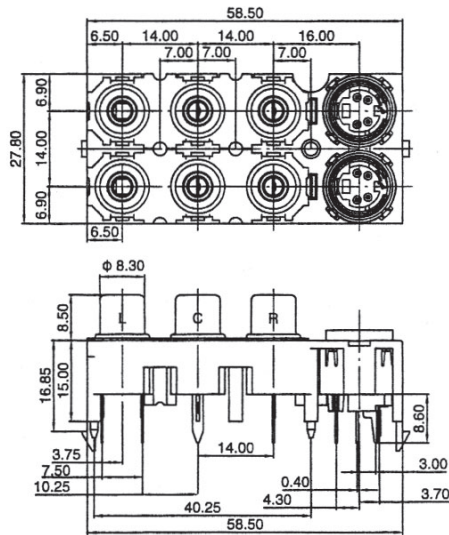
## ORDERING INFORMATION:

P/N 7708  $\frac{1}{2}$  -  $\frac{3}{456}$

1. TERMINAL FINISH:  
"S" SILVER PLATED (STANDARD)  
"G" GOLD FLASH PLATED
2. RCA BUSHING FINISH:  
"N" NICKEL PLATED (STANDARD)  
"G" GOLD FLASH PLATED
3. JACK CODE:  
02 (WITH 4P MINI DIN SOCKET)
4. RCA SCHEMATIC CODE:  
"0" SEE DRAWING !
5. NO. OF MINI DIN CONTACTS:  
4
6. RCA INSULATOR COLORS:  
(ARRANGEMENT: L → C → R)  
"B" BLACK      "A" GRAY  
"R" RED        "O" ORANGE  
"W" WHITE     "C" BROWN  
"Y" YELLOW  
"U" BLUE  
"N" GREEN

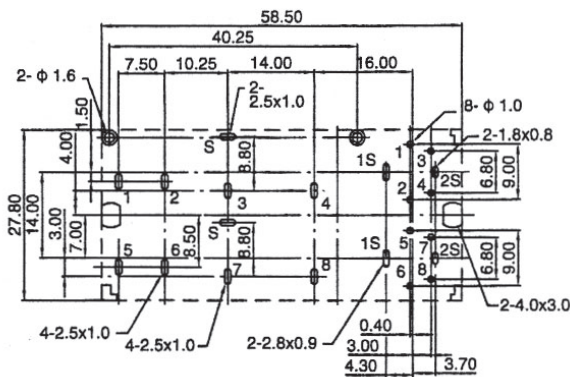
## EIGHT PORT RCA JACK (3)

### Dimension (m/m)

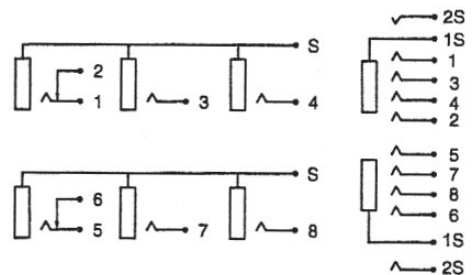


7708\*\***-03**

### Pin Hole Layout (Jack Bottom View)



### Schematic Code



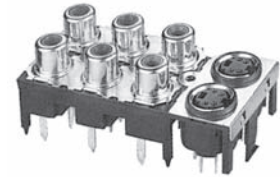
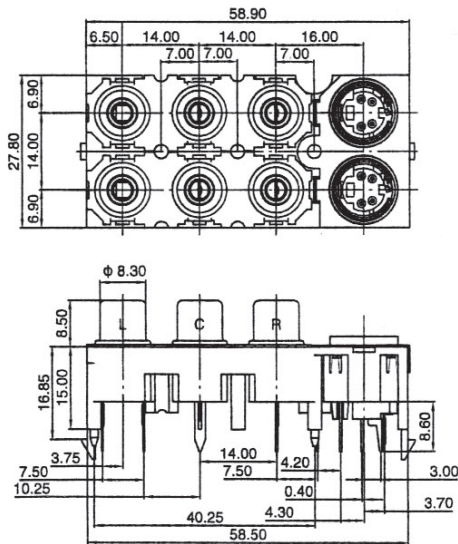
## ORDERING INFORMATION:

P/N 7708  $\frac{1}{2}$  -  $\frac{3}{4}$   $\frac{5}{6}$

- TERMINAL FINISH:  
"S" SILVER PLATED (STANDARD)  
"G" GOLD FLASH PLATED
- RCA BUSHING FINISH:  
"N" NICKEL PLATED (STANDARD)  
"G" GOLD FLASH PLATED
- JACK CODE:  
03 (WITH 4P MINI DIN SOCKET)
- RCA SCHEMATIC CODE:  
"0" SEE DRAWING !
- NO. OF MINI DIN CONTACTS:  
4
- RCA INSULATOR COLORS:  
(ARRANGEMENT: L → C → R)  
"B" BLACK      "A" GRAY  
"R" RED        "O" ORANGE  
"W" WHITE     "C" BROWN  
"Y" YELLOW  
"U" BLUE  
"N" GREEN

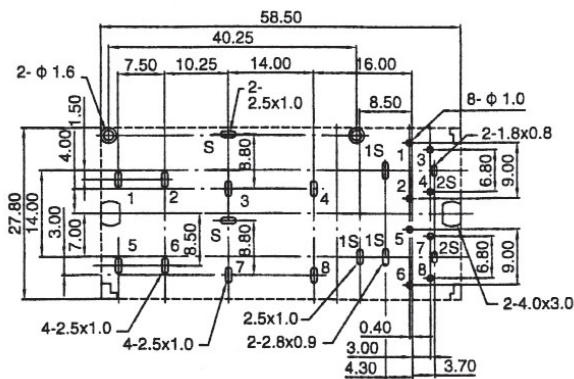
# EIGHT PORT RCA JACK (4)

## Dimension (m/m)

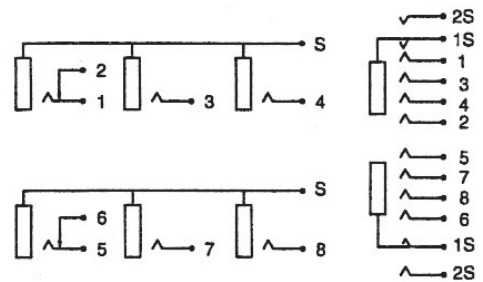


7708\*\*\*-04

## Pin Hole Layout (Jack Bottom View)



## Schematic Code



## ORDERING INFORMATION:

P/N 7708  $\frac{1}{2}$  -  $\frac{3}{4}$   $\frac{5}{6}$

1. TERMINAL FINISH:  
"S" SILVER PLATED (STANDARD)  
"G" GOLD FLASH PLATED
2. RCA BUSHING FINISH:  
"N" NICKEL PLATED (STANDARD)  
"G" GOLD FLASH PLATED
3. JACK CODE:  
04 (WITH 4P MINI DIN SOCKET)
4. RCA SCHEMATIC CODE:  
"0" SEE DRAWING !
5. NO. OF MINI DIN CONTACTS:  
4
6. RCA INSULATOR COLORS:  
(ARRANGEMENT: L → C → R)  
"B" BLACK      "A" GRAY  
"R" RED        "O" ORANGE  
"W" WHITE     "C" BROWN  
"Y" YELLOW  
"U" BLUE  
"N" GREEN