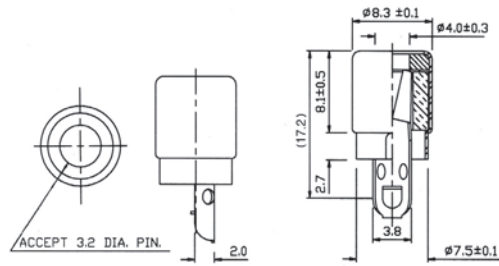


RCA PHONO JACK CONNECTOR (1)

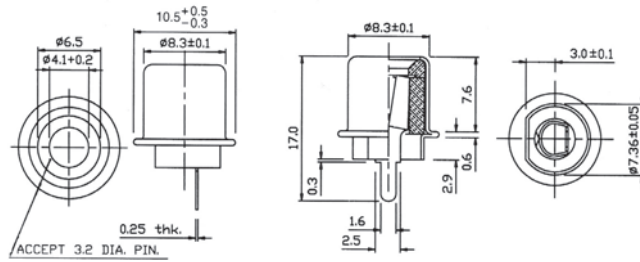
8001N-09

8001G-09



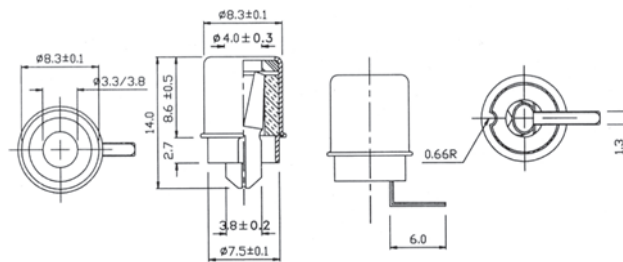
8001N-10

8001G-10



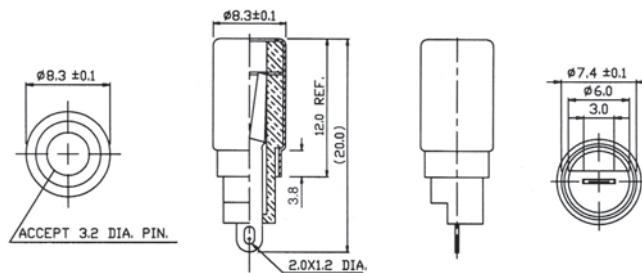
8001N-11

8001G-11



8001N-95

8001G-95



ORDERING INFORMATION:

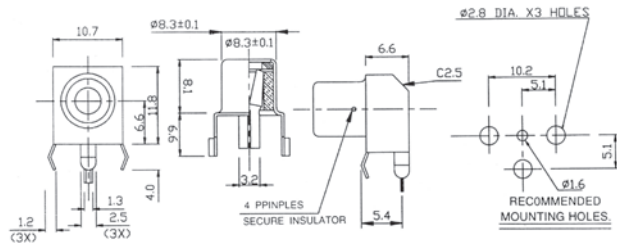
P/N 8001 $\frac{x}{1} - \frac{xx}{2} \frac{x}{3}$

1. CONNECTOR FINISH:
"N" NICKEL PLATED
"G" GOLD PLATED
2. CONNECTOR TYPE:
"09" RCA STRAIGHT SOLDER JACK
"10" RCA STRAIGHT SOLDER JACK
"11" RCA RIGHT ANGLE SOLDER JACK
"95" RCA STRAIGHT MOLDING JACK
3. INSULATOR COLOR:
"B" BLACK
"R" RED
"W" WHITE
"Y" YELLOW

RCA PHONO JACK CONNECTOR (2)

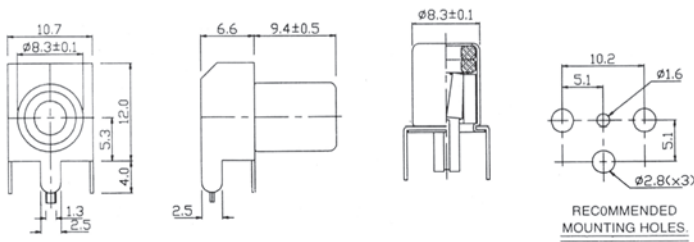
8001N-12

8001G-12



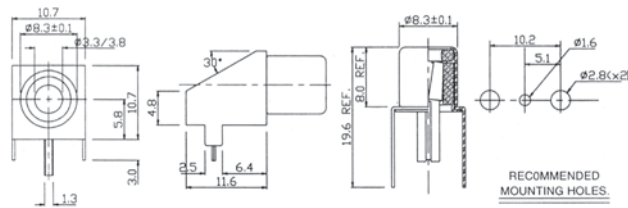
8001N-21

8001G-21



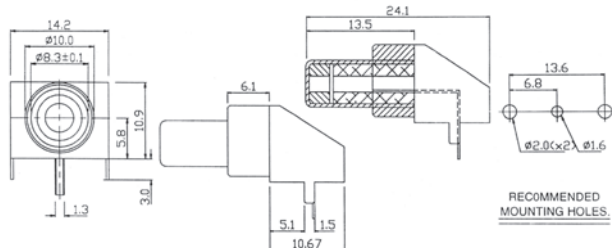
8001N-22

8001G-22



8001N-23

8001G-23



ORDERING INFORMATION:

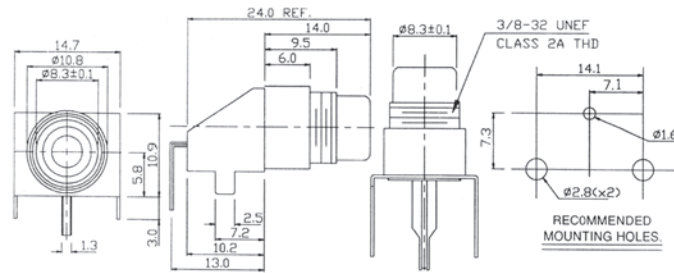
P/N 8001 $\frac{x}{1} - \frac{xx}{2} \frac{x}{3}$

1. CONNECTOR FINISH:
 "N" NICKEL PLATED
 "G" GOLD PLATED
2. CONNECTOR TYPE:
 "12" RCA RIGHT ANGLE PCB MOUNT JACK
 "21" RCA RIGHT ANGLE PCB MOUNT JACK
 "22" RCA RIGHT ANGLE PCB MOUNT JACK
 "23" RCA RIGHT ANGLE PCB MOUNT JACK
3. INSULATOR COLOR:
 "B" BLACK
 "R" RED
 "W" WHITE
 "Y" YELLOW

RCA PHONO JACK CONNECTOR (3)

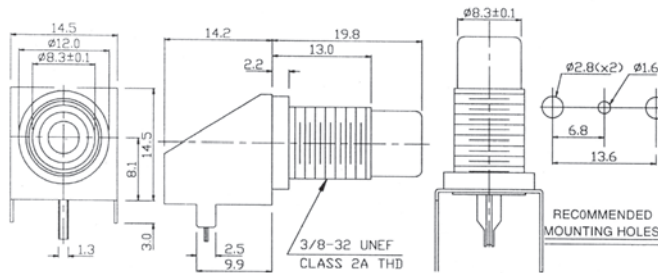
8001N-27

8001G-27



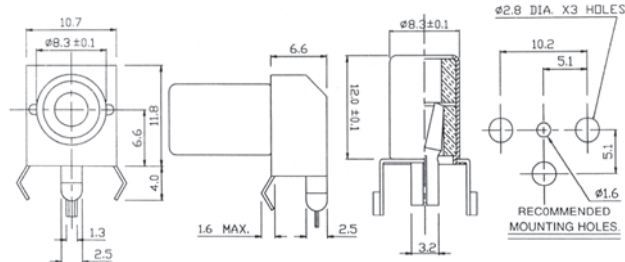
8001N-28

8001G-28



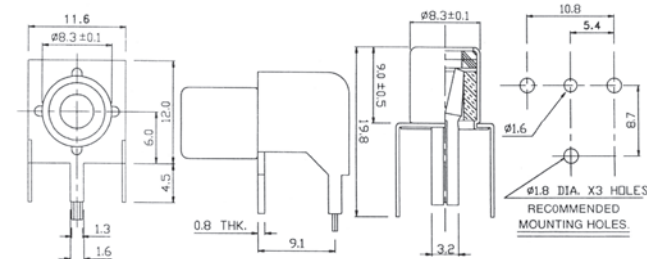
8001N-29

8001G-29



8001N-30

8001G-30



ORDERING INFORMATION:

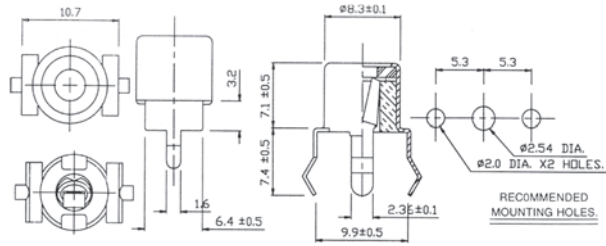
P/N 8001 $\frac{x}{1} - \frac{xx}{2} \frac{x}{3}$

1. CONNECTOR FINISH:
 "N" NICKEL PLATED
 "G" GOLD PLATED
2. CONNECTOR TYPE:
 "27" RCA RIGHT ANGLE PCB MOUNT SCREW JACK
 "28" RCA RIGHT ANGLE PCB MOUNT SCREW JACK
 "29" RCA RIGHT ANGLE PCB MOUNT JACK
 "30" RCA RIGHT ANGLE PCB MOUNT JACK
3. INSULATOR COLOR:
 "B" BLACK
 "R" RED
 "W" WHITE
 "Y" YELLOW

RCA PHONO JACK CONNECTOR (4)

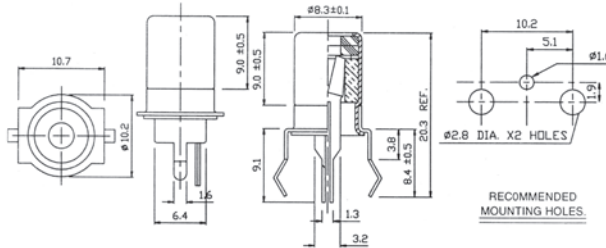
8001N-13

8001G-13



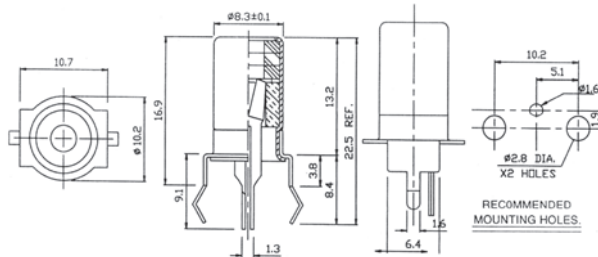
8001N-14

8001G-14



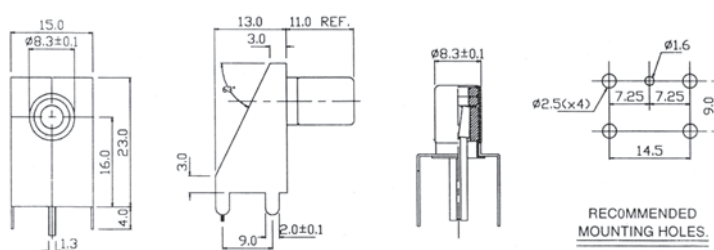
8001N-15

8001G-15



8001N-24

8001G-24



ORDERING INFORMATION:

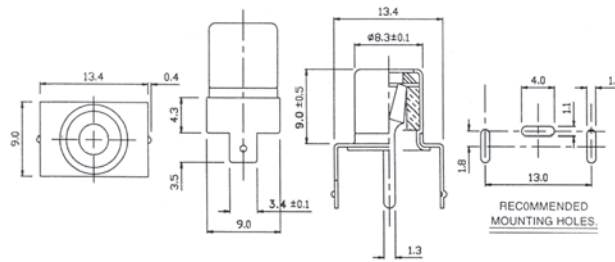
P/N 8001 $\frac{x}{1} - \frac{xx}{2} \frac{x}{3}$

1. CONNECTOR FINISH:
 "N" NICKEL PLATED
 "G" GOLD PLATED
2. CONNECTOR TYPE:
 "13" RCA STRAIGHT PCB MOUNT JACK
 "14" RCA STRAIGHT PCB MOUNT JACK
 "15" RCA STRAIGHT PCB MOUNT JACK
 "24" RCA RIGHT ANGLE PCB MOUNT JACK
3. INSULATOR COLOR:
 "B" BLACK
 "R" RED
 "W" WHITE
 "Y" YELLOW

RCA PHONO JACK CONNECTOR (5)

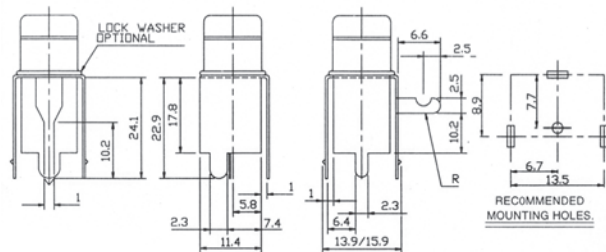
8001N-16

8001G-16



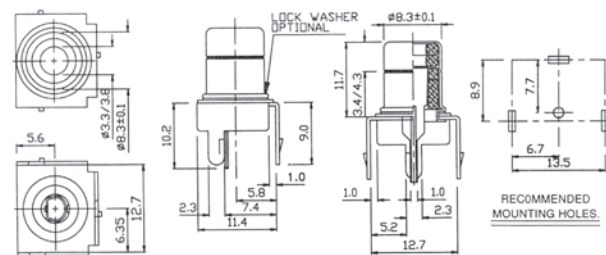
8001N-17

8001G-17



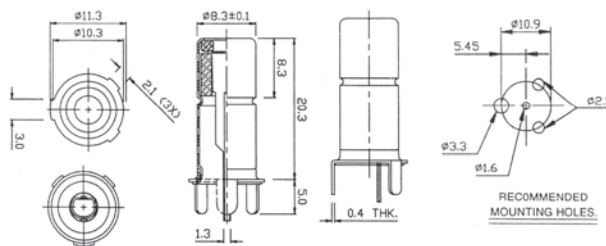
8001N-18

8001G-18



8001N-19

8001G-19



ORDERING INFORMATION:

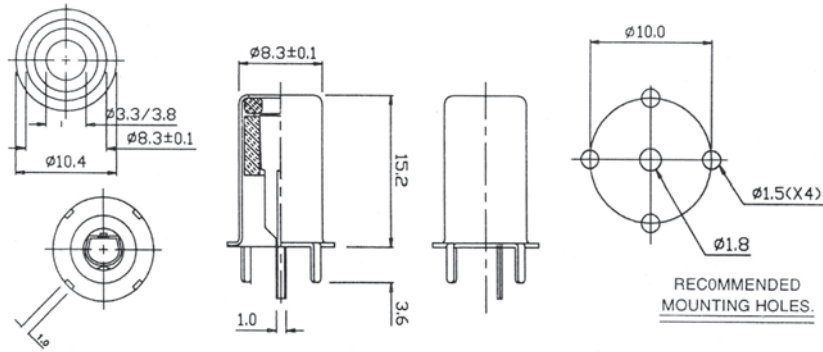
P/N 8001 $\frac{x}{1} - \frac{xx}{2} \frac{x}{3}$

1. CONNECTOR FINISH:
 "N" NICKEL PLATED
 "G" GOLD PLATED
2. CONNECTOR TYPE:
 "16" RCA STRAIGHT PCB MOUNT JACK
 "17" RCA STRAIGHT PCB MOUNT JACK
 "18" RCA STRAIGHT PCB MOUNT JACK
 "19" RCA STRAIGHT PCB MOUNT JACK
3. INSULATOR COLOR:
 "B" BLACK
 "R" RED
 "W" WHITE
 "Y" YELLOW

RCA PHONO JACK CONNECTOR (6)

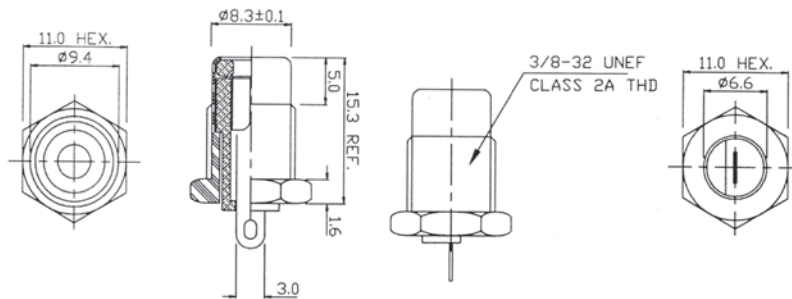
8001N-20

8001G-20



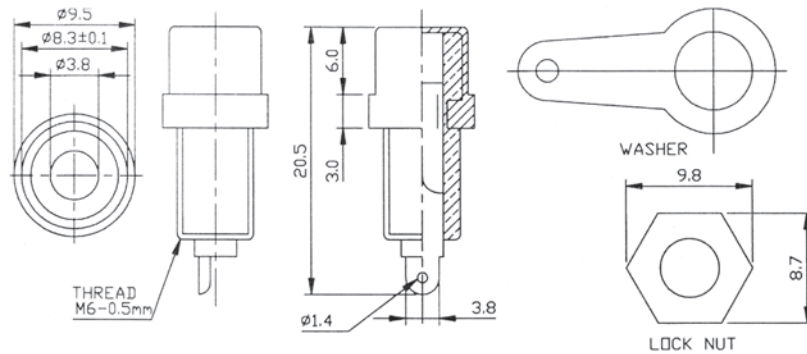
8001N-25

8001G-25



8001N-26

8001G-26



ORDERING INFORMATION:

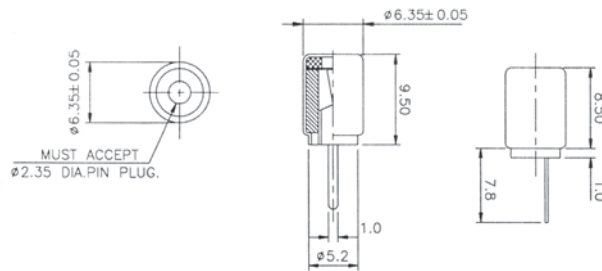
P/N 8001 $\frac{x}{1} - \frac{xx}{2} \frac{x}{3}$

1. CONNECTOR FINISH:
"N" NICKEL PLATED
"G" GOLD PLATED
2. CONNECTOR TYPE:
"20" RCA STRAIGHT PCB MOUNT JACK
"25" RCA STRAIGHT CHASSIS SCREW JACK
"26" RCA STRAIGHT CHASSIS SCREW JACK
3. INSULATOR COLOR:
"B" BLACK
"R" RED
"W" WHITE
"Y" YELLOW

MINIATURE RCA PHONO JACK CONNECTOR

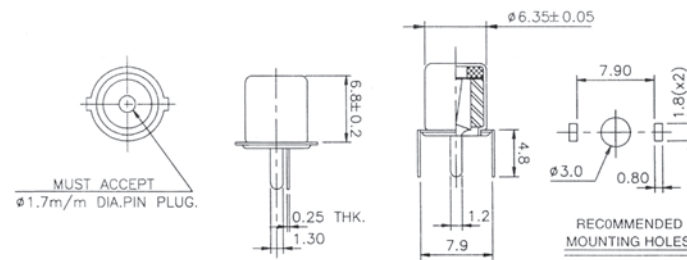
8001N-44

8001G-44



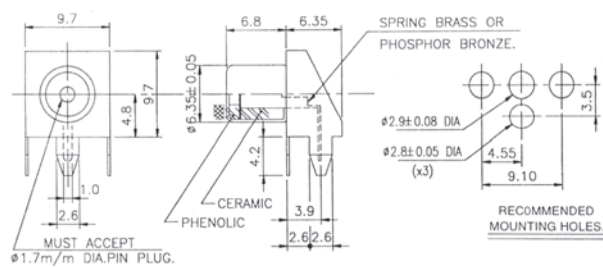
8001N-45

8001G-45



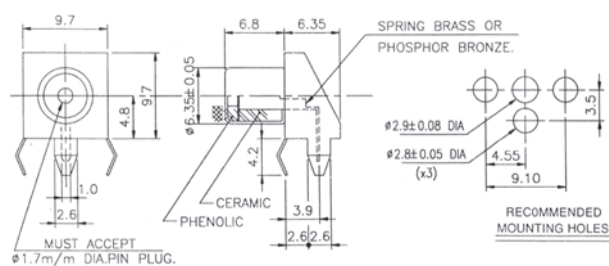
8001N-46

8001G-46



8001N-47

8001G-47



ORDERING INFORMATION:

P/N 8001 $\frac{x}{1} - \frac{xx}{2}$

1. CONNECTOR FINISH:

"N" NICKEL PLATED
"G" GOLD PLATED

2. CONNECTOR TYPE:

"44" MINI RCA STRAIGHT SOLDER JACK
"45" MINI RCA STRAIGHT PCB MOUNT JACK
"46" MINI RCA RIGHT ANGLE PCB MOUNT JACK
"47" MINI RCA RIGHT ANGLE PCB MOUNT JACK