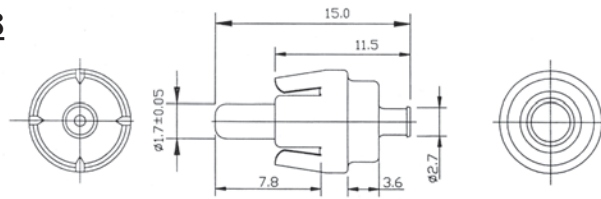


MINIATURE RCA PHONO PLUG CONNECTOR

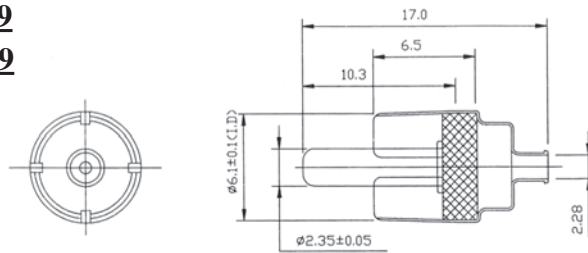
8001N-48

8001G-48



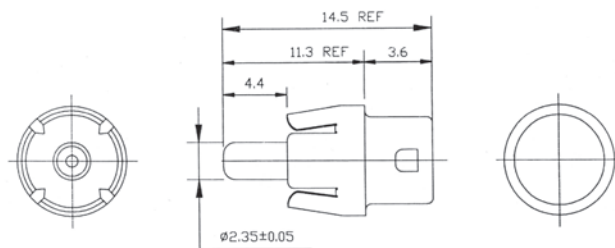
8001N-49

8001G-49



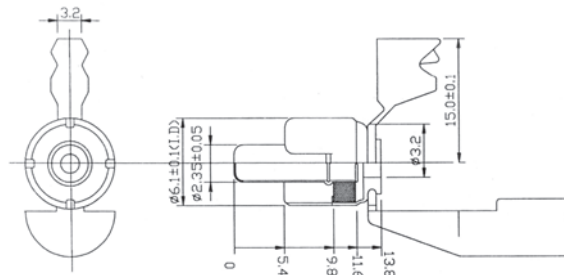
8001N-50

8001G-51



8001N-50

8001G-51



ORDERING INFORMATION:

P/N 8001 $\frac{x}{1} - \frac{xx}{2}$

1. CONNECTOR FINISH:

"N" NICKEL PLATED
"G" GOLD PLATED

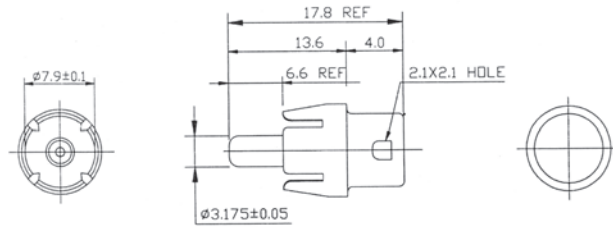
2. CONNECTOR TYPE:

"48" MINI RCA STRAIGHT SOLDER PLUG
"49" MINI RCA STRAIGHT SOLDER PLUG
"50" MINI RCA RIGHT ANGLE SOLDER PLUG
"51" MINI RCA RIGHT ANGLE CRIMP PLUG

RCA PHONO PLUG CONNECTOR (1)

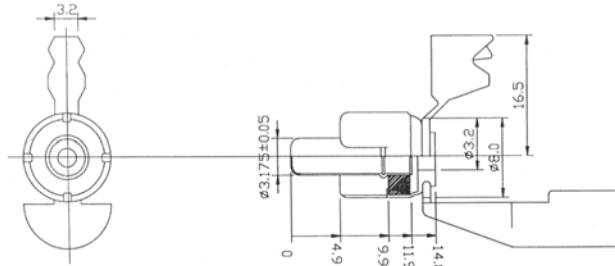
8001N-38

8001G-38



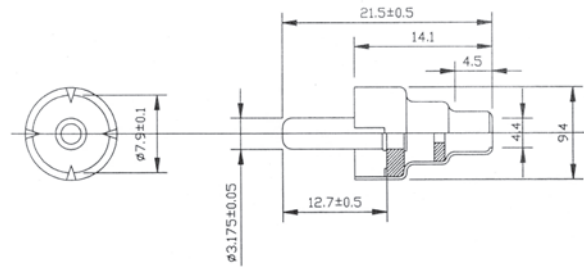
8001N-40

8001G-40



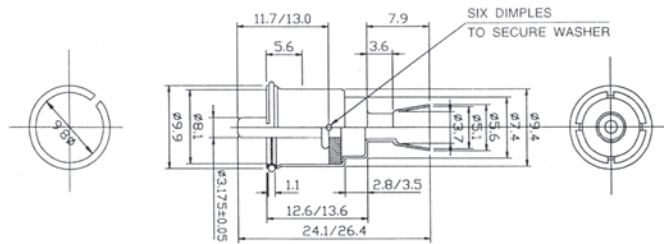
8001N-41

8001G-41



8001N-42

8001G-42



ORDERING INFORMATION:

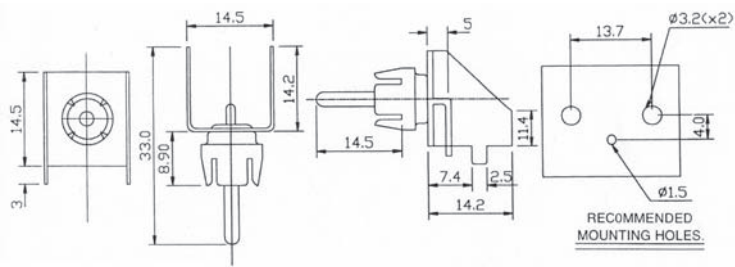
P/N 8001 $\frac{x}{1} - \frac{xx}{2}$

1. CONNECTOR FINISH:
"N" NICKEL PLATED
"G" GOLD PLATED
2. CONNECTOR TYPE:
"38" RCA RIGHT ANGLE SOLDER PLUG
"40" RCA RIGHT ANGLE CRIMP PLUG
"41" RCA STRAIGHT SOLDER PLUG
"42" RCA STRAIGHT LOCK RING PLUG

RCA PHONO PLUG CONNECTOR (2)

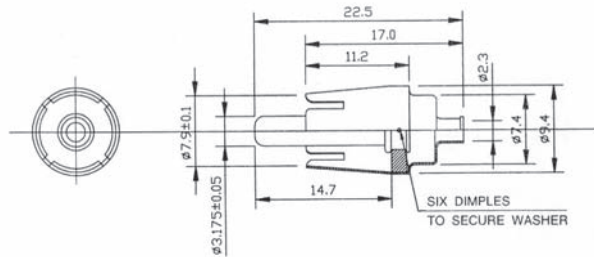
8001N-39

8001G-39



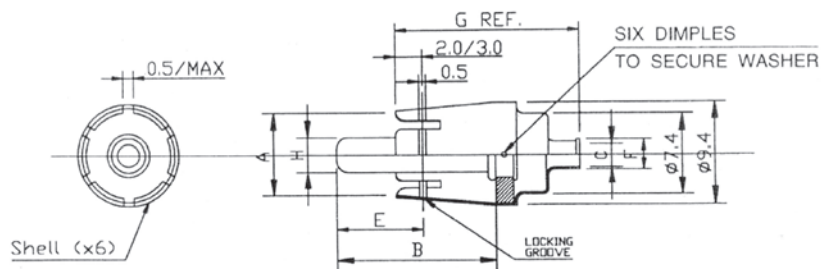
8001N-98

8001G-98



8001N-43

8001G-43



DASH	Dimensions(mm)							
	A	B	C	D	E	F	G	H
00	3.12/3.23	14.3/15.2	3.2	3.2	9.7	4.6	1.8	1.8/2.0
01	3.12/3.23	14.3/15.2	4.0	3.2	9.7	5.3	1.8	1.8/2.0
02	3.12/3.23	11.8/12.7	3.2	3.2	7.1	4.6	1.8	1.8/2.0
03	3.12/3.23	11.8/12.7	4.5	3.2	7.1	5.8	1.8	1.8/2.0

ORDERING INFORMATION:

P/N 8001 $\frac{x}{1} - \frac{xx}{2} - \frac{xx}{3}$

- CONNECTOR FINISH:
"N" NICKEL PLATED
"G" GOLD PLATED
- CONNECTOR TYPE:
"39" RCA RIGHT ANGLE PCB MOUNT PLUG
"98" RCA STRAIGHT MOLDING PLUG
"43" RCA STRAIGHT LOCK RING PLUG
- DIMENSION OPTION:
(FOR P/N 8001x-43-xx ONLY)
00, 01, 02, 03