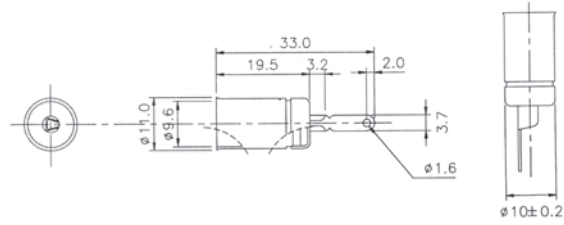


ANTENNA SOCKET CAR STEREO CONNECTOR

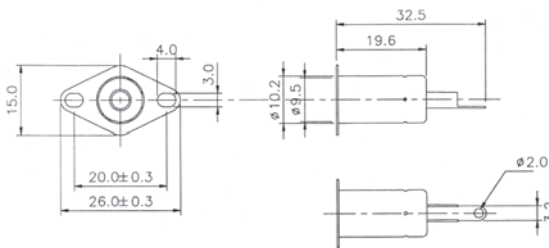
8001N-64

8001G-64



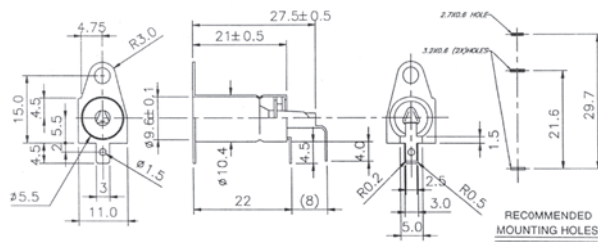
8001N-65

8001G-65



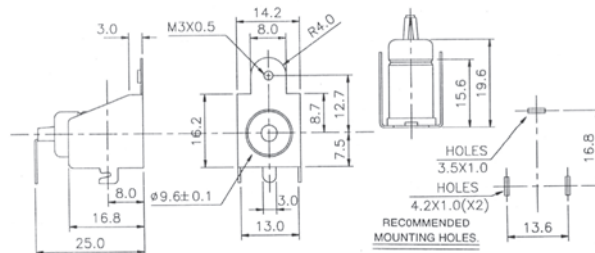
8001N-66

8001G-66



8001N-67

8001G-67



ORDERING INFORMATION:

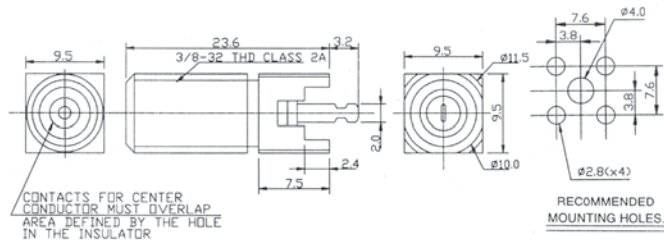
P/N 8001 $\frac{x}{1} - \frac{xx}{2}$

1. CONNECTOR FINISH:
 "N" NICKEL PLATED
 "G" GOLD PLATED
2. CONNECTOR TYPE:
 "64" ANTENNA STRAIGHT SOLDER JACK
 "65" ANTENNA STRAIGHT SCREW JACK
 "66" ANTENNA RIGHT ANGLE PCB MOUNT JACK
 "67" ANTENNA RIGHT ANGLE PCB MOUNT JACK

F FEMALE CONNECTOR (1)

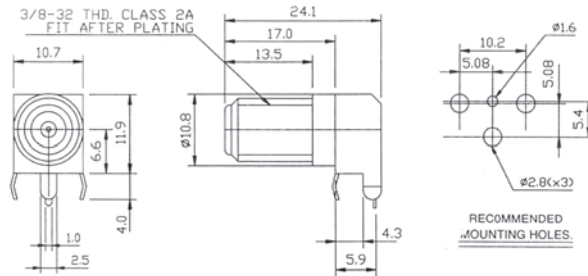
8001N-68

8001G-68



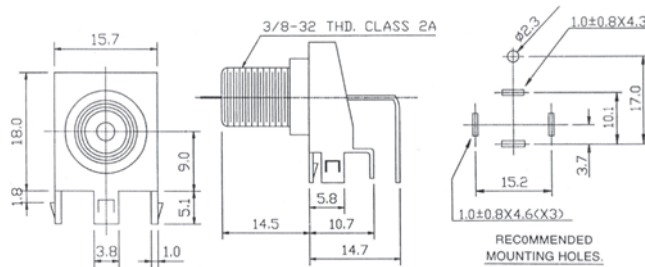
8001N-69

8001G-69



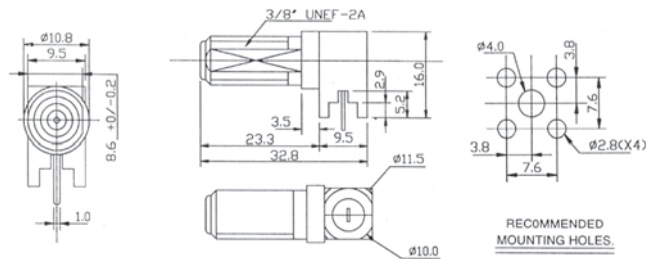
8001N-70

8001G-70



8001N-71

8001G-71



ORDERING INFORMATION:

P/N 8001 $\frac{x}{1} - \frac{xx}{2}$

1. CONNECTOR FINISH:

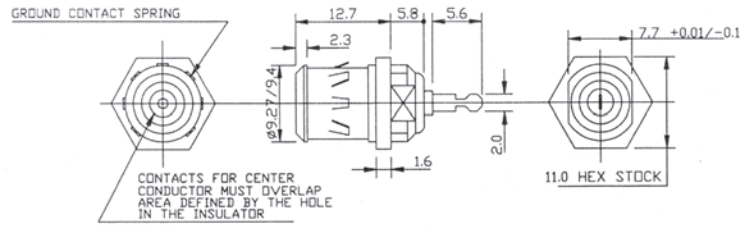
"N" NICKEL PLATED
"G" GOLD PLATED

2. CONNECTOR TYPE:

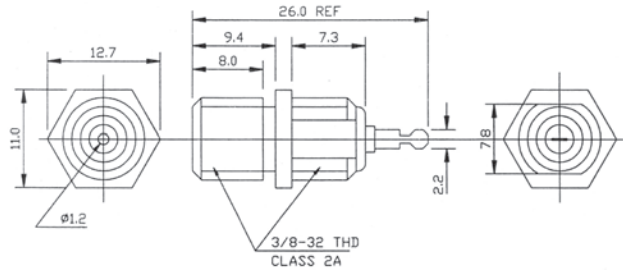
"68" F STRAIGHT PCB MOUNT JACK
"69" F RIGHT ANGLE PCB MOUNT JACK
"70" F RIGHT ANGLE PCB MOUNT JACK
"71" F RIGHT ANGLE PCB MOUNT JACK

F FEMALE CONNECTOR (2)

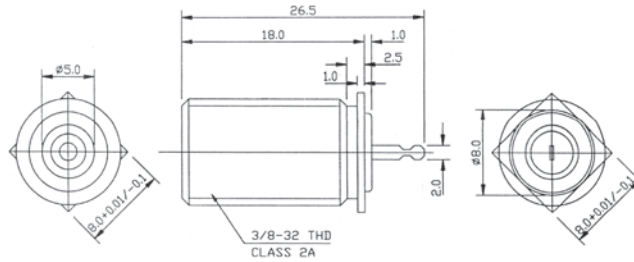
8001N-72
8001G-72



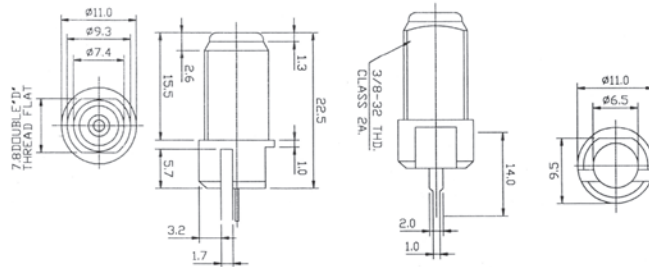
8001N-73
8001G-73



8001N-74
8001G-74



8001N-75
8001G-75



ORDERING INFORMATION:

P/N 8001 $\frac{x}{1} - \frac{xx}{2}$

1. CONNECTOR FINISH:
 - "N" NICKEL PLATED
 - "G" GOLD PLATED
2. CONNECTOR TYPE:
 - "72" F QUICK GROUND RECEPTACLE JACK
 - "73" F DOUBLE BULKHEAD RECEPTACLE JACK
 - "74" F SQUARE SITTING MOUNT JACK
 - "75" F PCB EDGE MOUNT JACK