

# SIDE ENTRY 2-PORT DOUBLE LEVEL MODULAR PCB JACK 6P PROFILE=25.14MM (FULLY SHIELDED)

## SPECIFICATIONS

**Insulation Resistance:** 500MΩ Min.

**Contact Resistance:** 20mΩ Max.

**Rating Current:** 1.5A Max.

**Rating Voltage:** 120V AC.

**Dielectric Voltage:** 1000 Vrms 60 Sec. Min.

**Temperature Range:** -40°C / +85°C

**Durability:** 500 Mating cycles Min.

## MATERIALS

**Housing:** PBT Glass Filled (UL 94V-0)

**Soldering Temperature:** 235°C

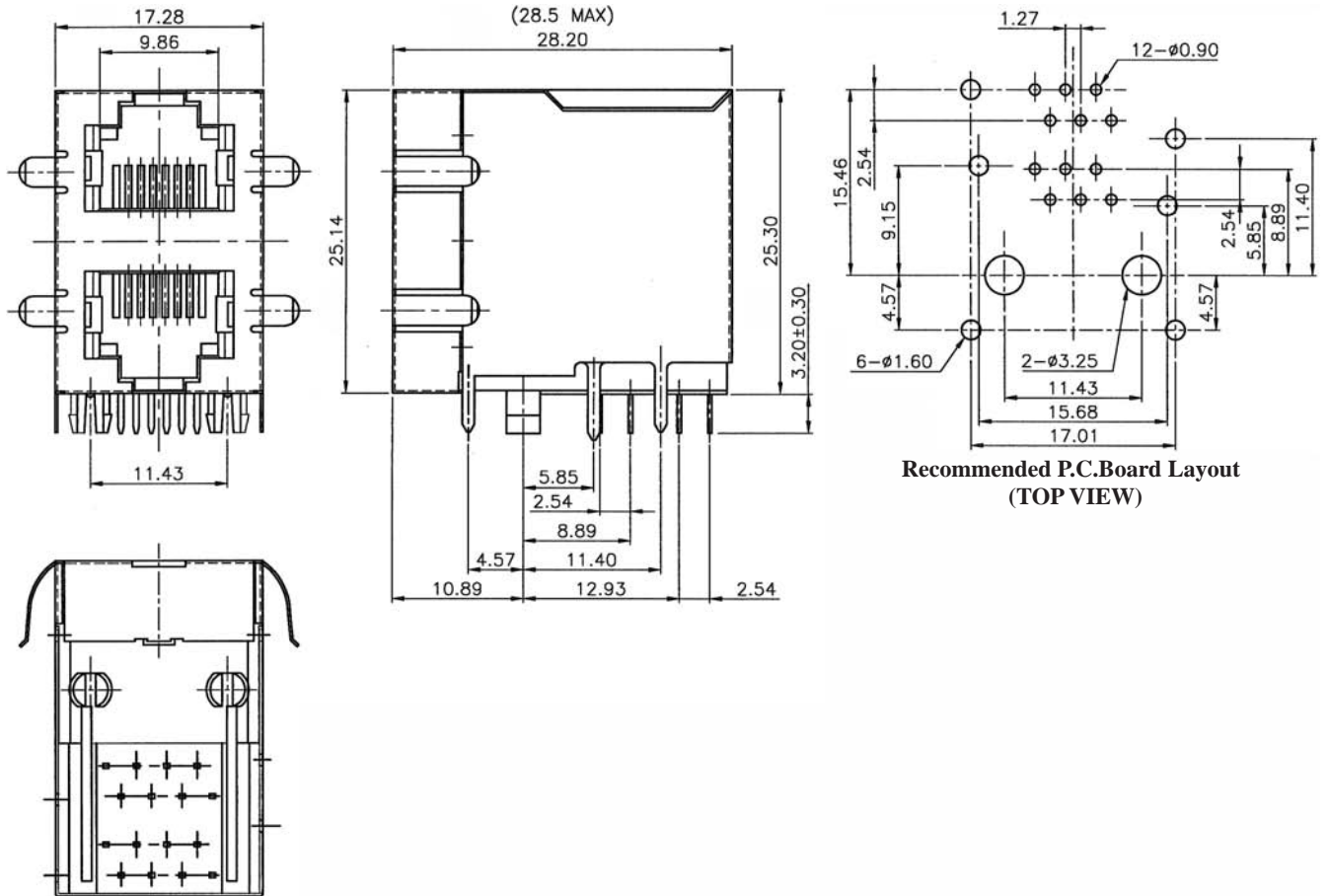
**Color:** Black

**Spring Wire:** Phosphor Bronze

Gold plating Over Nickel

**Shield:** Brass plating Nickel Alloy

**All materials must be RoHS compliant.**



## ORDERING INFORMATION:

**P/N M J 4 6 -  $\frac{x}{1} \frac{x}{2} \frac{x}{3} B 0 2$**

### 1. NO. OF POSITIONS & CONTACTS:

"66" 6P6C

"64" 6P4C

### 2. CONTACT FINISH:

"A" 6 MICROINCH GOLD

"B" 15 MICROINCH GOLD

"C" 30 MICROINCH GOLD

"D" 50 MICROINCH GOLD

### 3. NO. OF PORTS:

02

NOTE: WITH SIDE PANEL GROUNDS

# SIDE ENTRY 4-PORT DOUBLE LEVEL MODULAR PCB JACK 6P PROFILE=25.30MM (FULLY SHIELDED)

## SPECIFICATIONS

**Insulation Resistance:** 500MΩ Min.

**Contact Resistance:** 20mΩ Max.

**Rating Current:** 1.5A Max.

**Rating Voltage:** 120V AC.

**Dielectric Voltage:** 1000 Vrms 60 Sec. Min.

**Temperature Range:** -40°C / +85°C

**Durability:** 500 Mating cycles Min.

## MATERIALS

**Housing:** PBT Glass Filled (UL 94V-0)

**Soldering Temperature:** 235°C

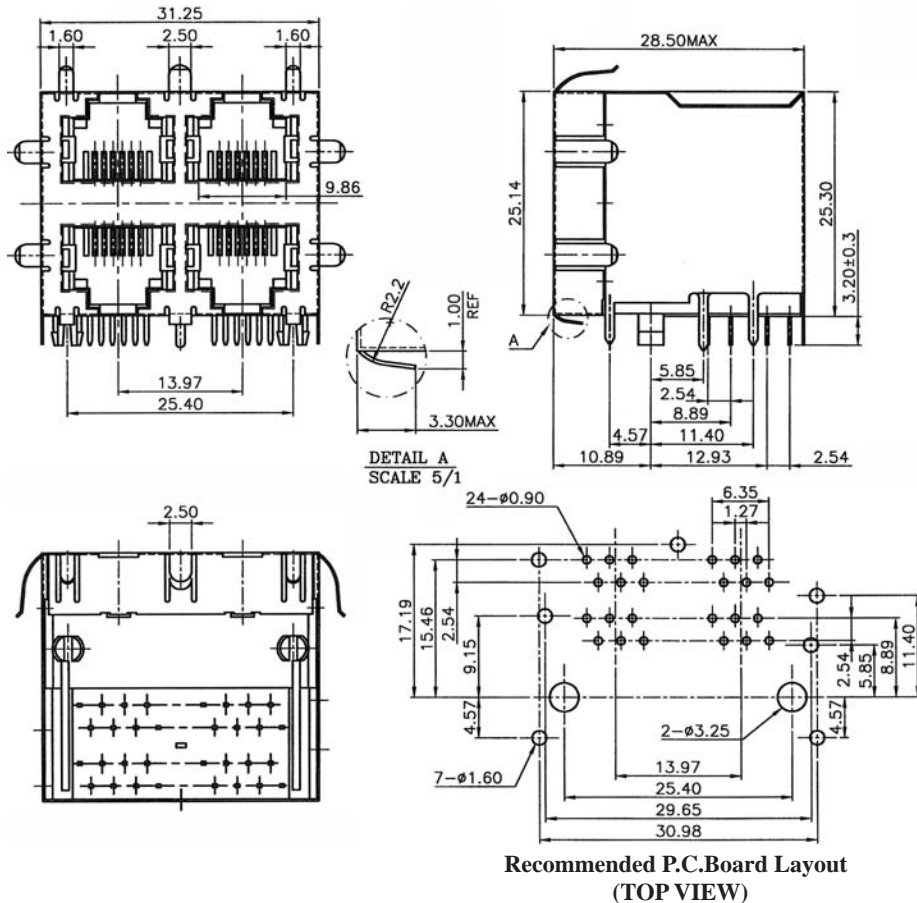
**Color:** Black

**Spring Wire:** Phosphor Bronze

Gold plating Over Nickel

**Shield:** Brass plating Nickel Alloy

All materials must be RoHS compliant.



Recommended P.C. Board Layout  
(TOP VIEW)

## ORDERING INFORMATION:

P/N M J 2 8 -  $\frac{x}{1} \frac{x}{2} \frac{x}{3}$  B 0 4

1. NO. OF POSITIONS & CONTACTS:

"66" 6P6C

"64" 6P4C

2. CONTACT FINISH:

"A" 6 MICROINCH GOLD

"B" 15 MICROINCH GOLD

"C" 30 MICROINCH GOLD

"D" 50 MICROINCH GOLD

3. NO. OF PORTS:

04

NOTE: WITH TOP & SIDE PANEL GROUNDS

# SIDE ENTRY 6-PORT DOUBLE LEVEL MODULAR PCB JACK 6P PROFILE=25.30MM (FULLY SHIELDED)

## SPECIFICATIONS

Insulation Resistance: 500MΩ Min.

Contact Resistance: 20mΩ Max.

Rating Current: 1.5A Max.

Rating Voltage: 120V AC.

Dielectric Voltage: 1000 Vrms 60 Sec. Min.

Temperature Range: -40°C / +85°C

Durability: 500 Mating cycles Min.

## MATERIALS

Housing: PBT Glass Filled (UL 94V-0)

Soldering Temperature: 235°C

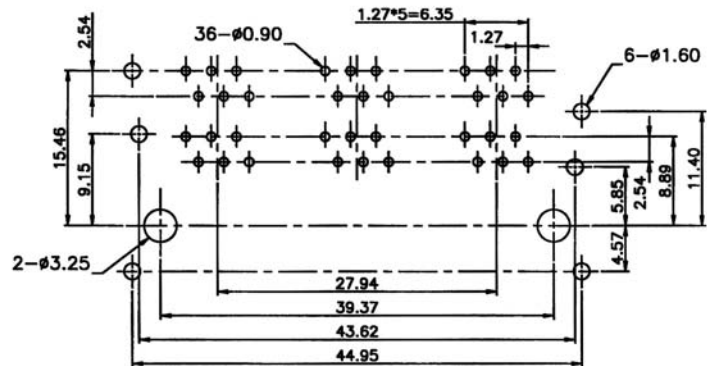
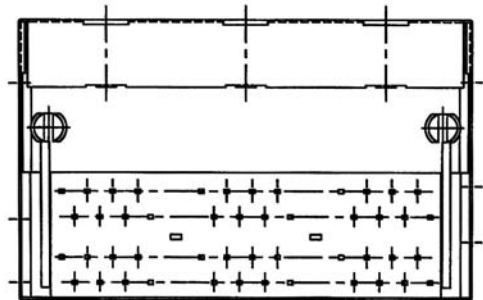
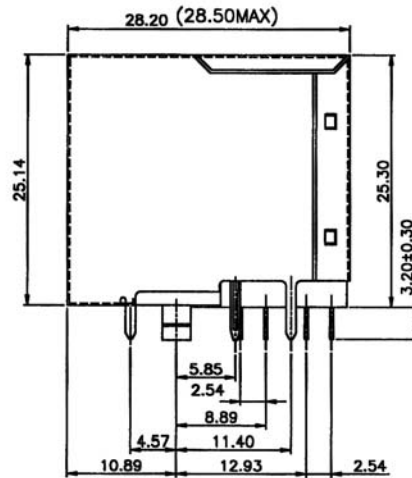
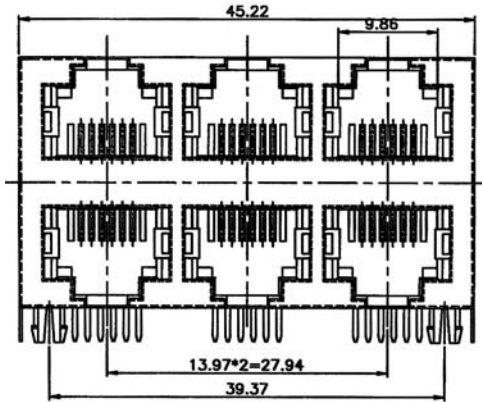
Color: Black

Spring Wire: Phosphor Bronze

Gold plating Over Nickel

Shield: Brass plating Nickel Alloy

All materials must be RoHS compliant.



Recommended P.C. Board Layout  
(TOP VIEW)

## ORDERING INFORMATION:

P/N M J A 2 -  $\frac{x}{1} \frac{x}{2} \frac{x}{3} B \frac{0}{3} 6$

### 1. NO. OF POSITIONS & CONTACTS:

"66" 6P6C

"64" 6P4C

### 2. CONTACT FINISH:

"A" 6 MICROINCH GOLD

"B" 15 MICROINCH GOLD

"C" 30 MICROINCH GOLD

"D" 50 MICROINCH GOLD

### 3. NO. OF PORTS:

06

# SIDE ENTRY 8-PORT DOUBLE LEVEL MODULAR PCB JACK 6P PROFILE=25.30MM (FULLY SHIELDED)

## SPECIFICATIONS

**Insulation Resistance:** 500MΩ Min.

**Contact Resistance:** 20mΩ Max.

**Rating Current:** 1.5A Max.

**Rating Voltage:** 120V AC.

**Dielectric Voltage:** 1000 Vrms 60 Sec. Min.

**Temperature Range:** -40°C / +85°C

**Durability:** 500 Mating cycles Min.

## MATERIALS

**Housing:** PBT Glass Filled (UL 94V-0)

**Soldering Temperature:** 235°C

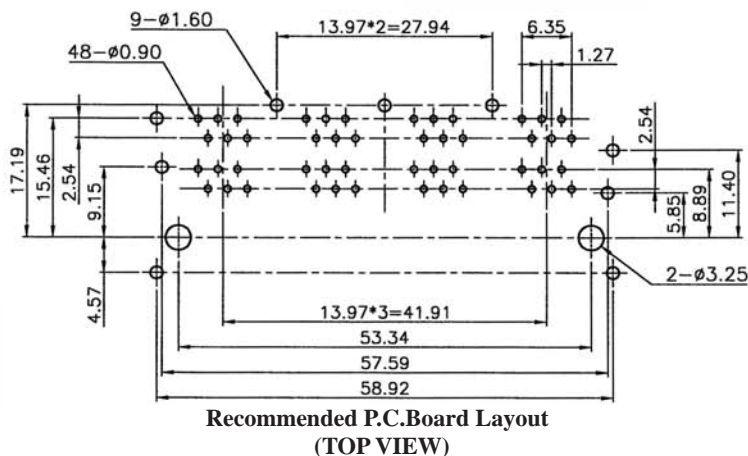
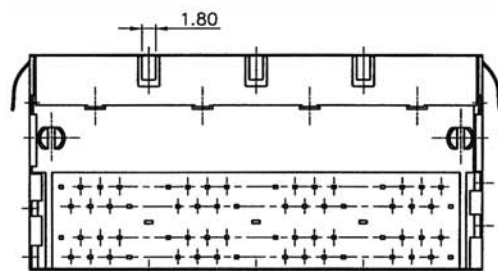
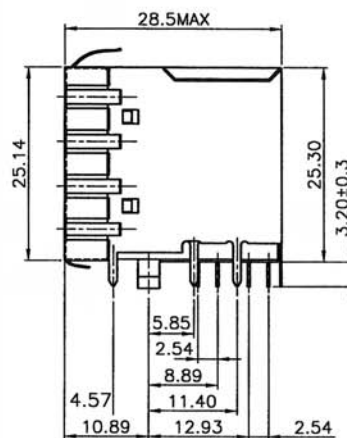
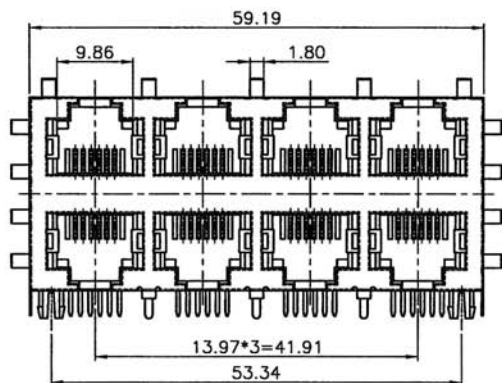
**Color:** Black

**Spring Wire:** Phosphor Bronze

Gold plating Over Nickel

**Shield:** Brass plating Nickel Alloy

All materials must be RoHS compliant.



## ORDERING INFORMATION:

P/N M J 2 8 -  $\frac{x}{1} \frac{x}{2} \frac{x}{3}$  B 0 8

1. NO. OF POSITIONS & CONTACTS:

"66" 6P6C

"64" 6P4C

2. CONTACT FINISH:

"A" 6 MICROINCH GOLD

"B" 15 MICROINCH GOLD

"C" 30 MICROINCH GOLD

"D" 50 MICROINCH GOLD

3. NO. OF PORTS:

08

NOTE: WITH TOP & SIDE PANEL GROUNDS