

MODULAR COUPLER JACK 6P (UNSHIELDED)

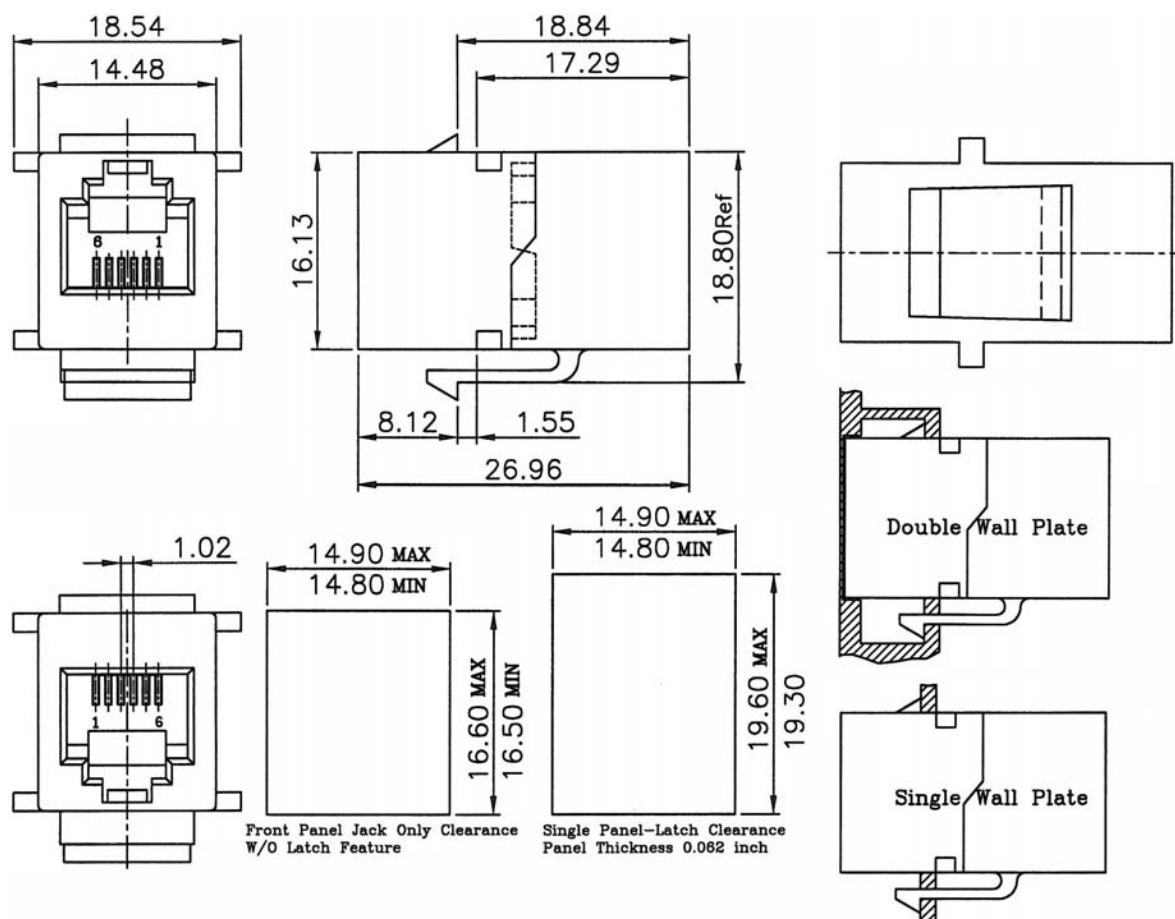
MATERIALS

Plastic Housing: Engineering thermoplastic
Flammability rating UL 94V-0

Contact: 0.35mm thickness Phosphor Bronze

Plating: Gold plating over Nickel in contact

All materials must be RoHS compliant.



ORDERING INFORMATION:

P/N M J 9 3 - $\frac{x x x x}{1 2 3}$

1. NO. OF POSITIONS & CONTACTS:

"66" 6P6C

"64" 6P4C

2. CONTACT FINISH:

"A" 6 MICROINCH GOLD

"B" 15 MICROINCH GOLD

"C" 30 MICROINCH GOLD

"D" 50 MICROINCH GOLD

3. HOUSING COLOR:

"B" BLACK (STANDARD)

"W" WHITE

"V" IVORY

"A" GRAY

"Y" YELLOW

"R" RED

"N" GREEN

"U" BLUE

MODULAR COUPLER JACK 6P (FULLY SHIELDED)

SPECIFICATIONS

Insulation Resistance: 500MΩ Min.

Contact Resistance: 20mΩ Max.

Rating Current: 1.5A Max.

Rating Voltage: 120V AC.

Dielectric Voltage: 1000 Vrms 60 Sec. Min.

Temperature Range: -40°C / +85°C

Durability: 500 Mating cycles Min.

MATERIALS

Housing: PBT Glass Filled (UL 94V-0)

Soldering Temperature: 235°C

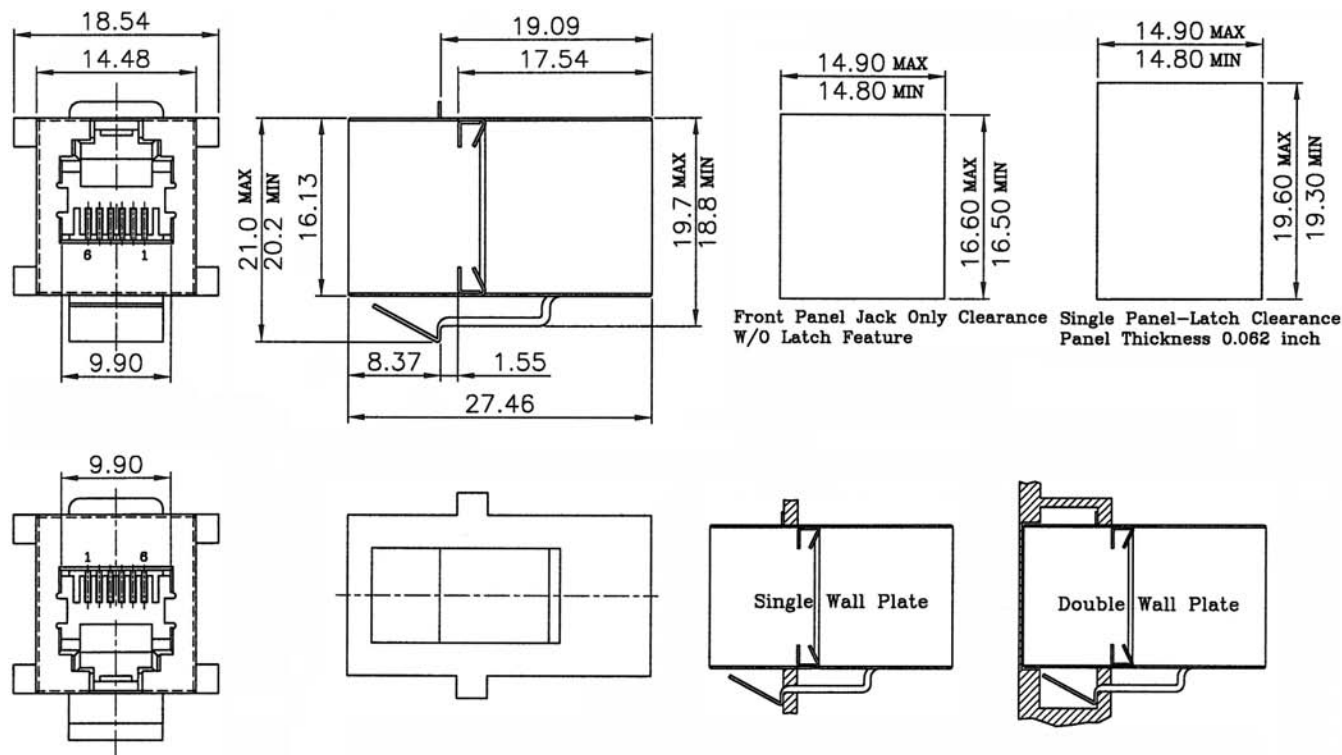
Color: Black

Spring Wire: Phosphor Bronze

Gold plating Over Nickel

Shield: Brass plating Nickel Alloy

All materials must be RoHS compliant.



ORDERING INFORMATION:

P/N M J 9 3 - $\frac{x}{1} \frac{x}{2} \frac{s}{3}$

1. NO. OF POSITIONS & CONTACTS:

"66" 6P6C

"64" 6P4C

2. CONTACT FINISH:

"A" 6 MICROINCH GOLD

"B" 15 MICROINCH GOLD

"C" 30 MICROINCH GOLD

"D" 50 MICROINCH GOLD

3. SHIELD OPTION:

"S" SHIELDED

MODULAR COUPLER JACK 8P (UNSHIELDED)

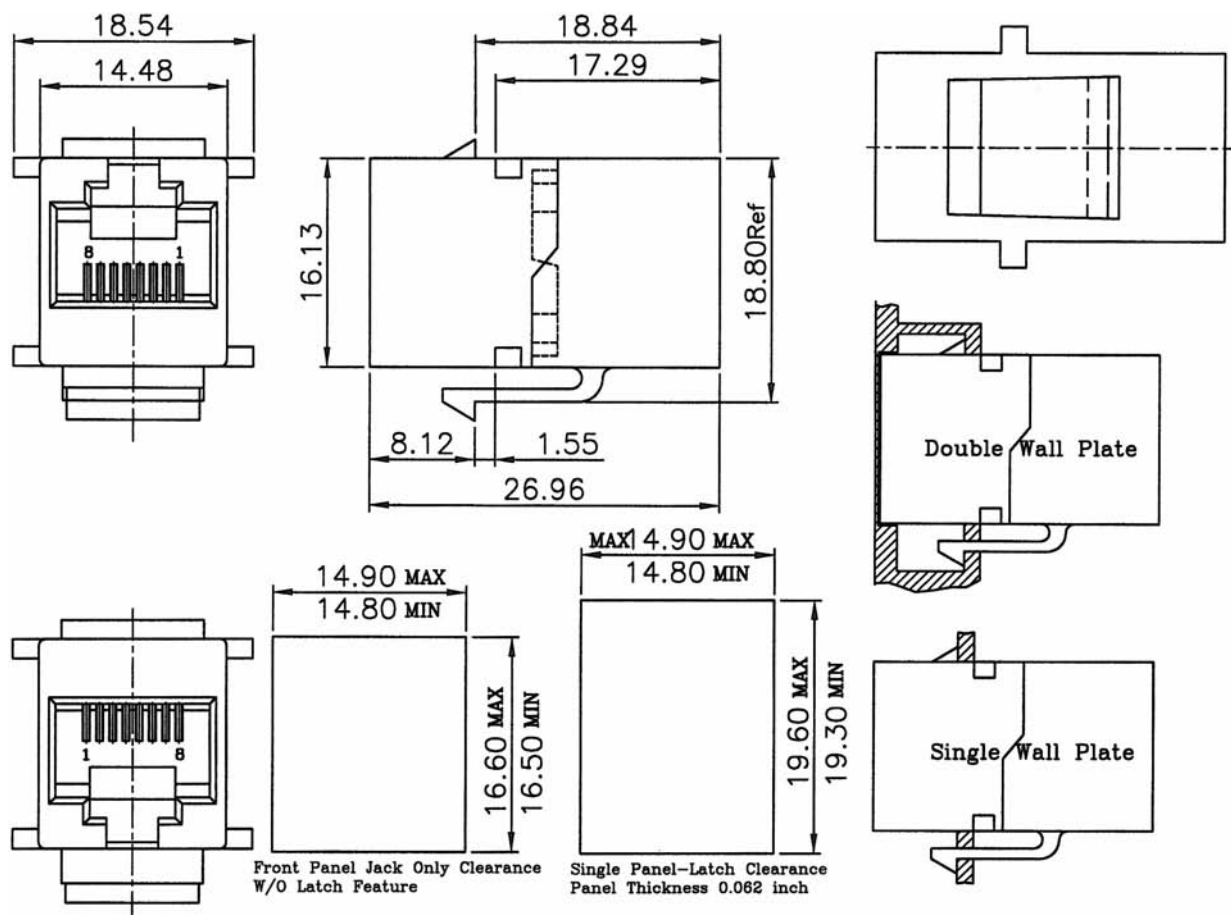
MATERIALS

Plastic Housing: Engineering thermoplastic
Flammability rating UL 94V-0

Contact: 0.35mm thickness Phosphor Bronze

Plating: Gold plating over Nickel in contact

All materials must be RoHS compliant.



ORDERING INFORMATION:

P/N M J 9 3 - $\frac{88}{1} \times \frac{x}{23}$

1. NO. OF POSITIONS & CONTACTS:

"88" 8P8C

2. CONTACT FINISH:

"A" 6 MICROINCH GOLD

"B" 15 MICROINCH GOLD

"C" 30 MICROINCH GOLD

"D" 50 MICROINCH GOLD

3. HOUSING COLOR:

"B" BLACK (STANDARD)

"W" WHITE

"V" IVORY

"A" GRAY

"Y" YELLOW

"R" RED

"N" GREEN

"U" BLUE

MODULAR COUPLER JACK 8P (FULLY SHIELDED)

MATERIALS

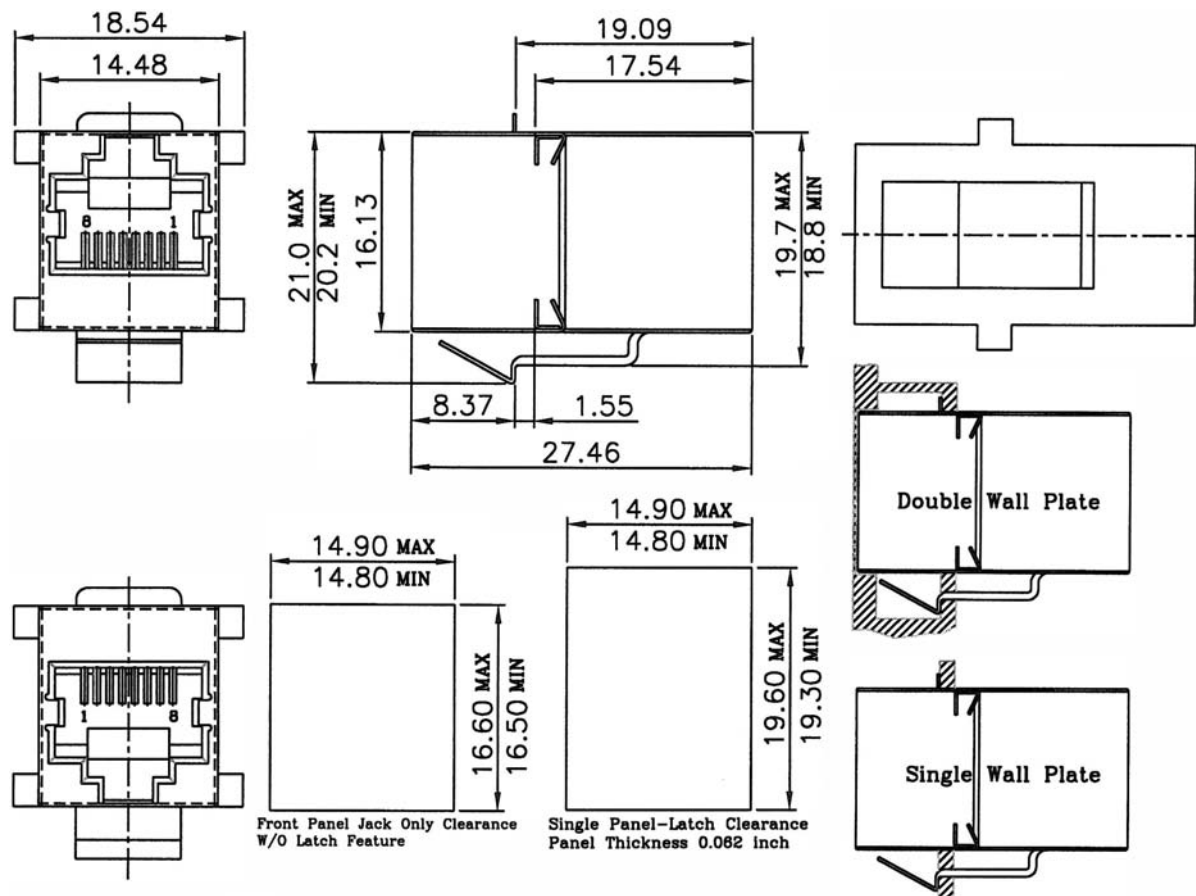
Shielded: Stainless steel

Plastic Housing: Engineering thermoplastic
Flammability rating UL 94V-0

Contact: 0.35mm thickness Phosphor Bronze

Plating: Gold plating over Nickel in contact

All materials must be RoHS compliant.



ORDERING INFORMATION:

P/N M J 9 3 - $\frac{88}{1} \times \frac{S}{23}$

1. NO. OF POSITIONS & CONTACTS:

"88" 8P8C

2. CONTACT FINISH:

"A" 6 MICROINCH GOLD

"B" 15 MICROINCH GOLD

"C" 30 MICROINCH GOLD

"D" 50 MICROINCH GOLD

3. SHIELD OPTION:

"S" SHIELDED

CAT. 5E MODULAR COUPLER JACK 8P (FULLY SHIELDED)

MATERIALS

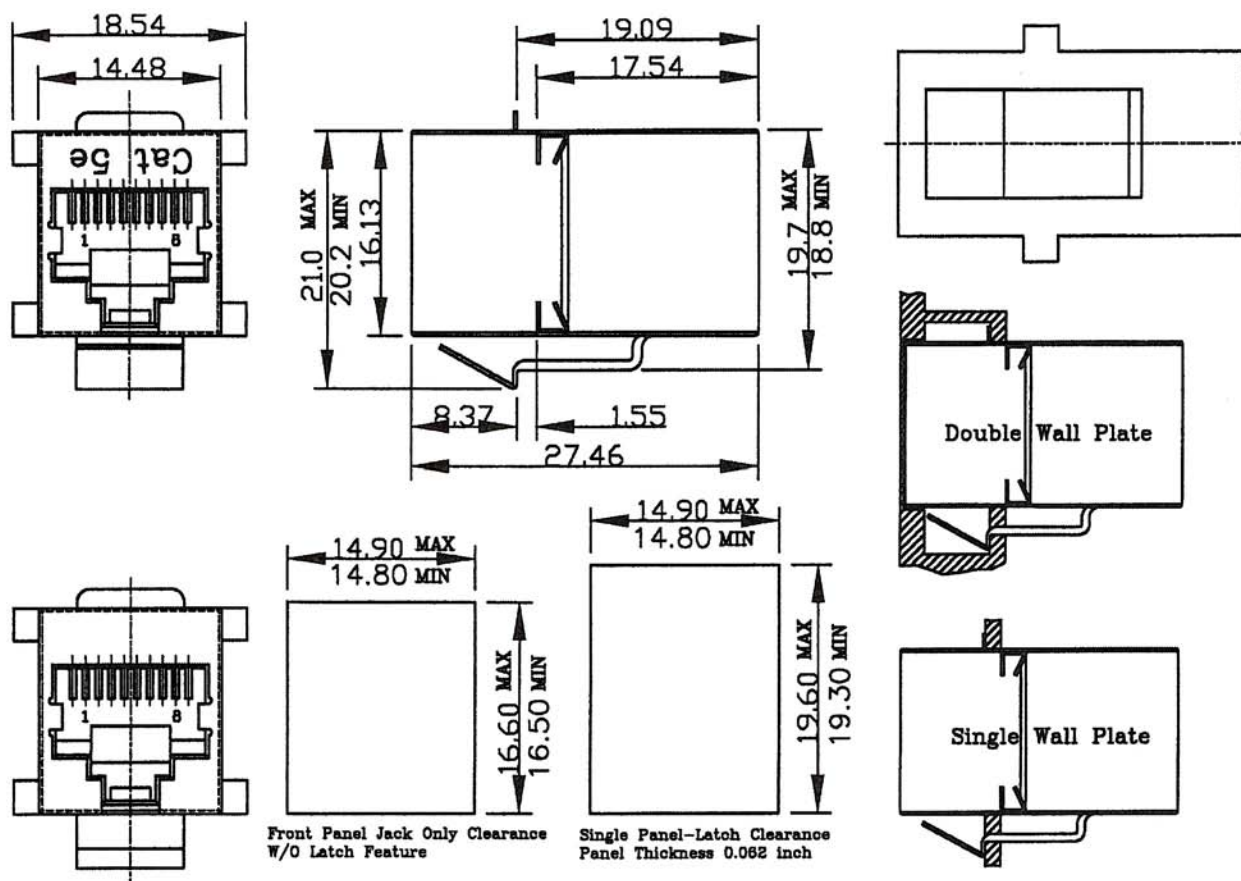
Shielded: Stainless steel

Plastic Housing: Engineering thermoplastic
Flammability rating UL 94V-0

Contact: Phosphor Bronze

Plating: Gold plating over Nickel in contact

All materials must be RoHS compliant.



ORDERING INFORMATION:

P/N M J E 9 - 88 x S
1 2 3

1. NO. OF POSITIONS & CONTACTS:
"88" 8P8C
2. CONTACT FINISH:
"A" 6 MICROINCH GOLD
"B" 15 MICROINCH GOLD
"C" 30 MICROINCH GOLD
"D" 50 MICROINCH GOLD
3. SHIELD OPTION:
"S" SHIELDED

NOTE: CATEGORY 5e VERSION

MODULAR COUPLER JACK 10P (FULLY SHIELDED)

MATERIALS

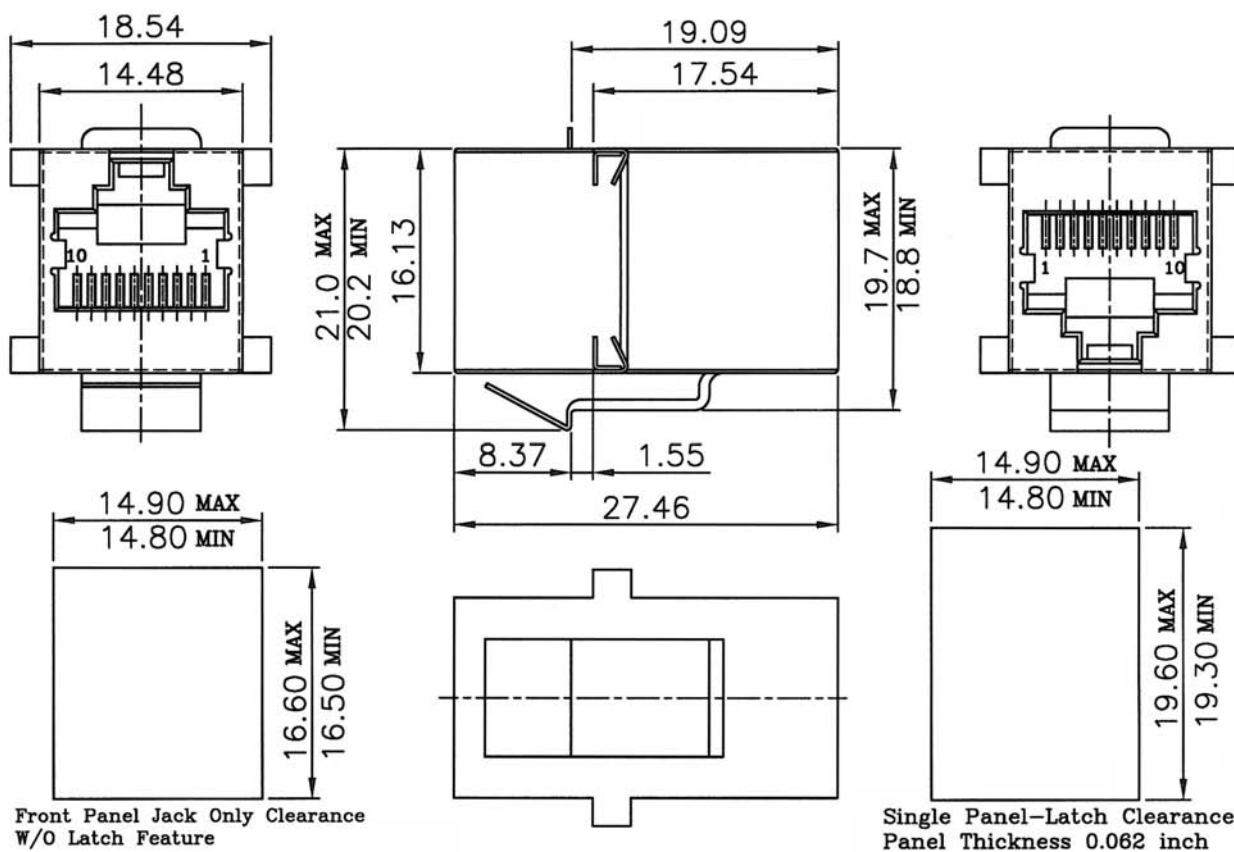
Shielded: Stainless steel

Plastic Housing: Engineering thermoplastic
Flammability rating UL 94V-0

Contact: Phosphor Bronze

Plating: Gold plating over Nickel in contact
Tin plating over Nickel in solder area

All materials must be RoHS compliant.



ORDERING INFORMATION:

P/N M J 9 3 - $\frac{00}{1} \times \frac{S}{23}$

1. NO. OF POSITIONS & CONTACTS:
"00" 10P10C
2. CONTACT FINISH:
"A" 6 MICROINCH GOLD
"B" 15 MICROINCH GOLD
"C" 30 MICROINCH GOLD
"D" 50 MICROINCH GOLD
3. SHIELD OPTION:
"S" SHIELDED