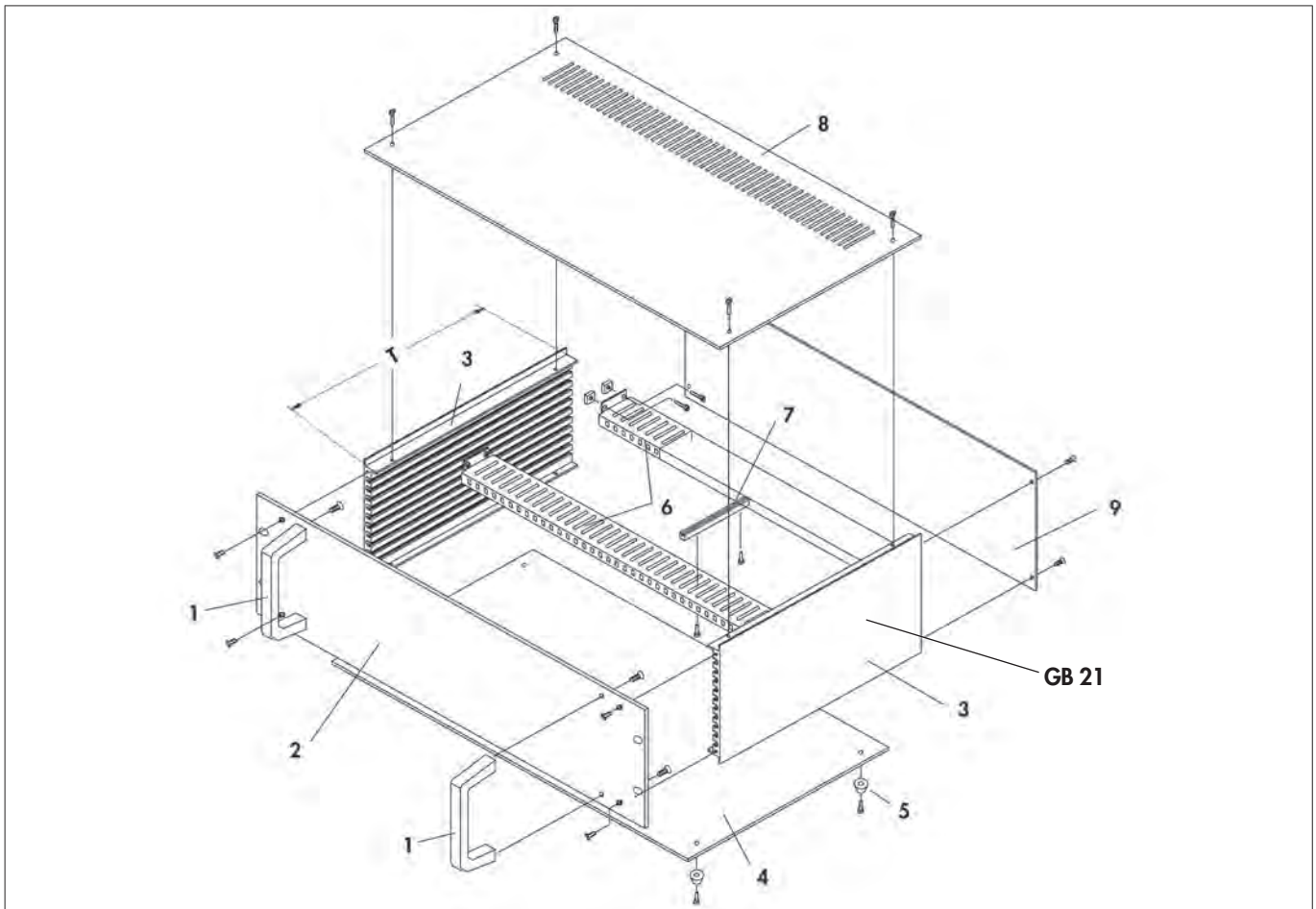


19" plug-in chassis



- with mounting possibility for PCB's
- closed version
- with side panels of slotted aluminium profile for insertion of carrier rails **TS CE**
- mounting rails with oval hole cut-outs for **M 3** both above and on the sides featuring 2 HP spacing
- oval hole cutouts for mounting of e.g. modules or guide rails **FS 6**
- with removable cover and bottom panels, by means of guide rails **FS 6** additional PCBs can be mounted
- cover with 1 row of ventilation slots, bottom panel closed
- **contents of delivery:** front panel with handles; 2 x aluminium profile side panels
1 x bottom and cover plate; 1 x rear panel; fixing material

1 = handle; **2** = front plate (4mm); **3** = side panel profile; **4** = bottom panel; **5** = foot
6 = carrier rail **TS CE**; **7** = guide rail; **8** = cover panel; **9** = rear panel (3 mm)



art. no.	dim. [mm] T	art. no.	dim. [mm] T
CE 3 260	260	CE 3 360	360
surface:		front panel and handles are natural colour anodised/ side panels, cover panels and rear panels transparent passivated	



19" plug-in chassis

Mounting rails

- used to fasten modules or guide-rails
- mounting rail is perforated in 2 HP spacing, width 3.2 mm over the whole length

art. no.	
TS CE	
surface:	chrome-free transparent passivated

Threaded rails

- the threaded rails are inserted into the side panel profiles to fasten the mounting rails. (6 x 2 ; M 3)
- dimensioned drawing of the side panel profile **GB 21** → N 66

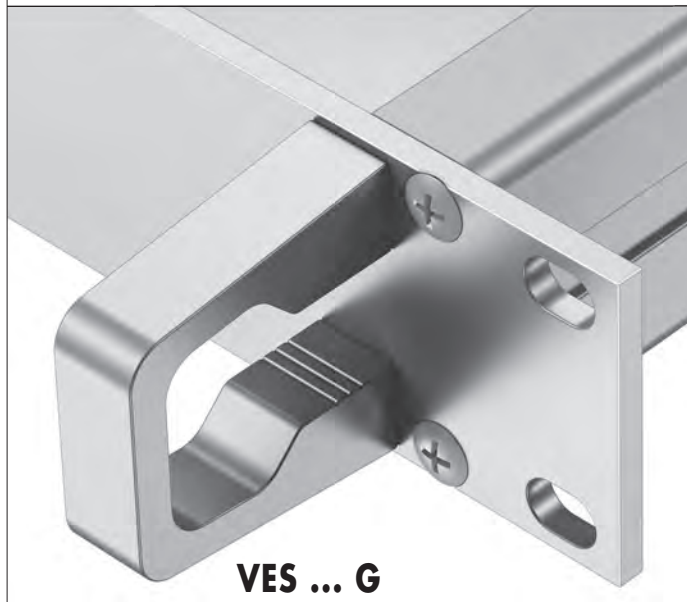


art. no.	dim. [mm]	art. no.	dim. [mm]
	T		T
GS 260	260	GS 360	360

19" plug-in boxes



VES ...



VES ... G

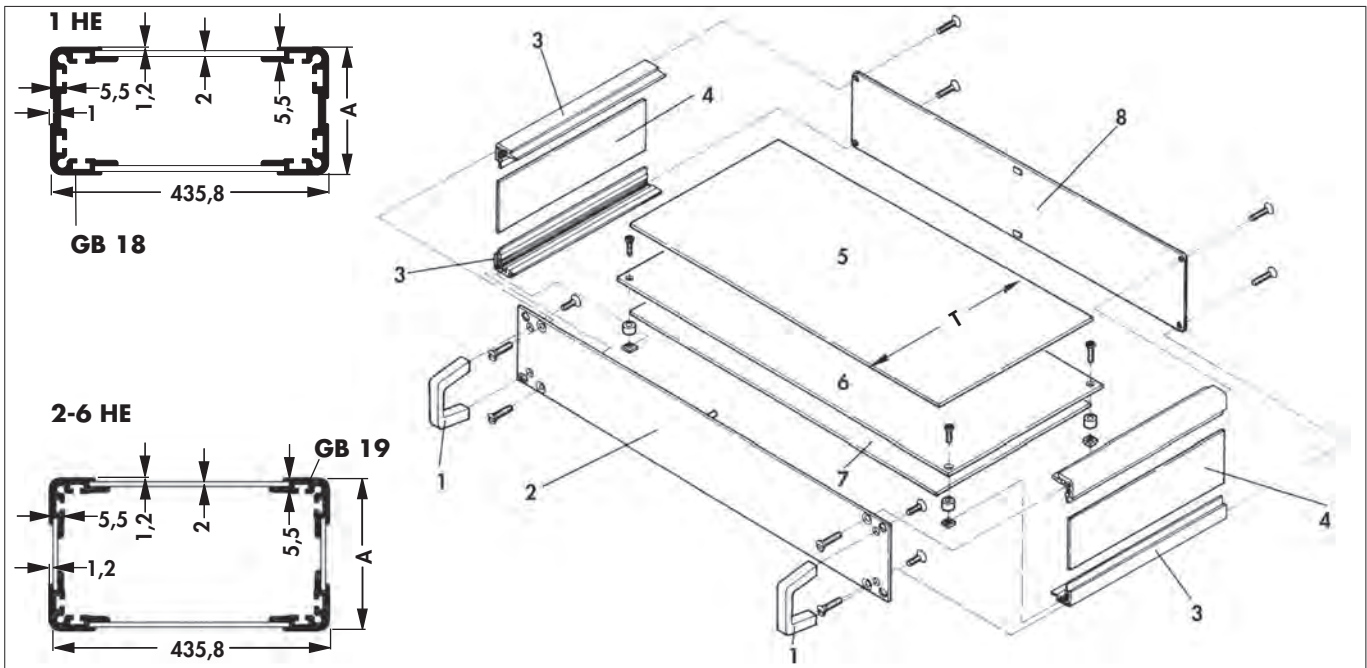


VES ... L

- 19" plug-in box **VES** for insertion of non-standardised components or circuit boards
- side panels in 1 U version made of side panel profile **GB 18**
- side panels in 2-6 U version made of edge profiles **GB 19** with inserted side panels
- sliding-screw channel in the profiles is used for insertion of the mounting- or chassis panel **MPW**; hence no perforation needed in the bottom panel
- support element on the front panel and back panel avoid deflection of cover and bottom panel
- special mechanical treatments, other dimensions and surfaces are possible according to customer's request
- **material thickness:** front panel 4 mm, back panel 2 mm
- **contents of delivery:** front panel, side panels, edge and/or side profiles, rear panel, cover and bottom panel
- dimensioned drawing of the side panel profile **GB 18/19** → N 66

19" plug-in boxes

1 = handles; 2 = front panel (4 mm); 3 = edge profile; 4 = side panel; 5 = cover panel; 6 = mounting panel; 7 = bottom panel; 8 = back panel (2 mm); ET = insertion depth



art. no.	dim. [mm]		art. no.	dim. [mm]		
	A	ET		A	ET	
VES 1 260 ...	43.5	262	VES 4 300 ...	177.0	302	
VES 2 260 ...	88.1		VES 5 300 ...	221.4		
VES 3 260 ...	132.5		VES 6 300 ...	265.9		
VES 4 260 ...	177.0		VES 1 360 ...	43.5		362
VES 5 260 ...	221.4		VES 2 360 ...	88.1		
VES 6 260 ...	265.9		VES 3 360 ...	132.5		
VES 1 300 ...	43.5	VES 4 360 ...	177.0			
VES 2 300 ...	88.1	VES 5 360 ...	221.4			
VES 3 300 ...	132.5	VES 6 360 ...	265.9			

please indicate:

... accessories (optional)

G = handles

DL = cover panel with ventilation slots

L = cover and bottom panels with ventilation slots

surface:

natural colour anodised

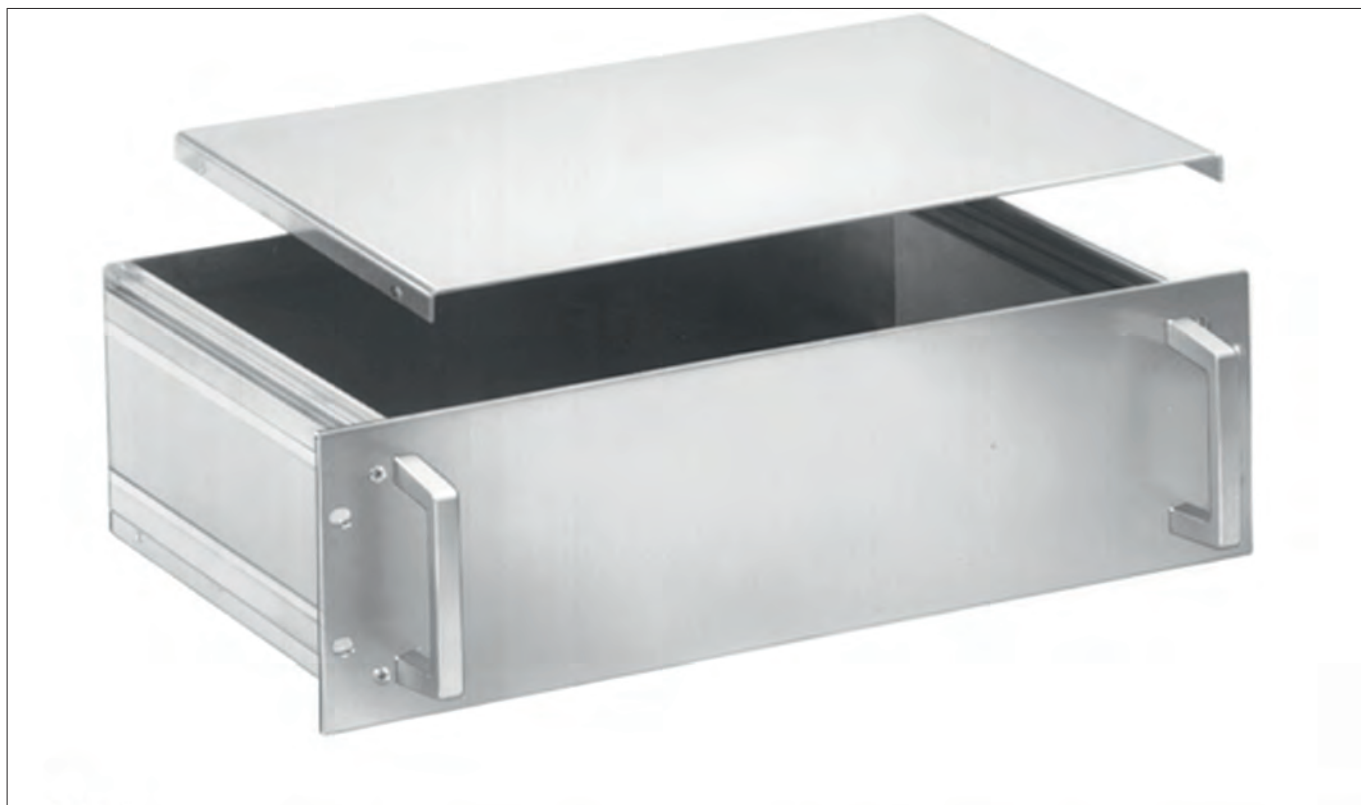
Mounting plate

– perforations in the bottom panel are avoided by fixing devices on the mounting plate

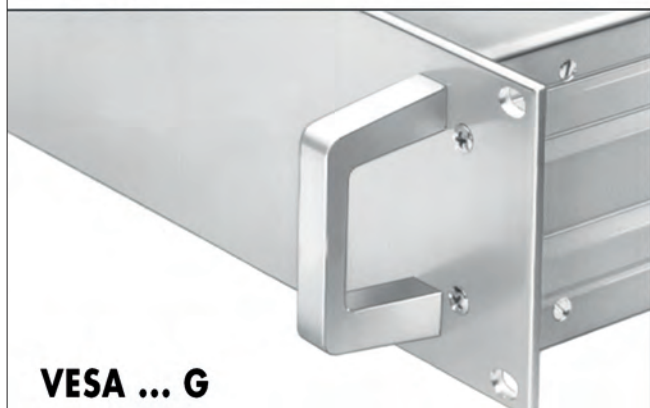


art. no.	dim. [mm]		art. no.	dim. [mm]	
	T			T	
MPW 260	260		MPW 360	360	
MPW 300	300				

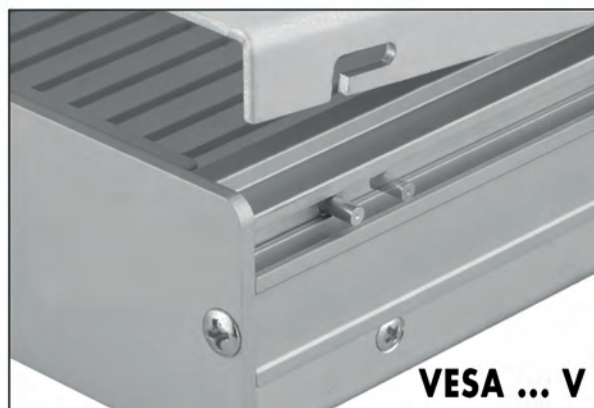
19" plug-in box with removable cover panel



VESA ...



VESA ... G

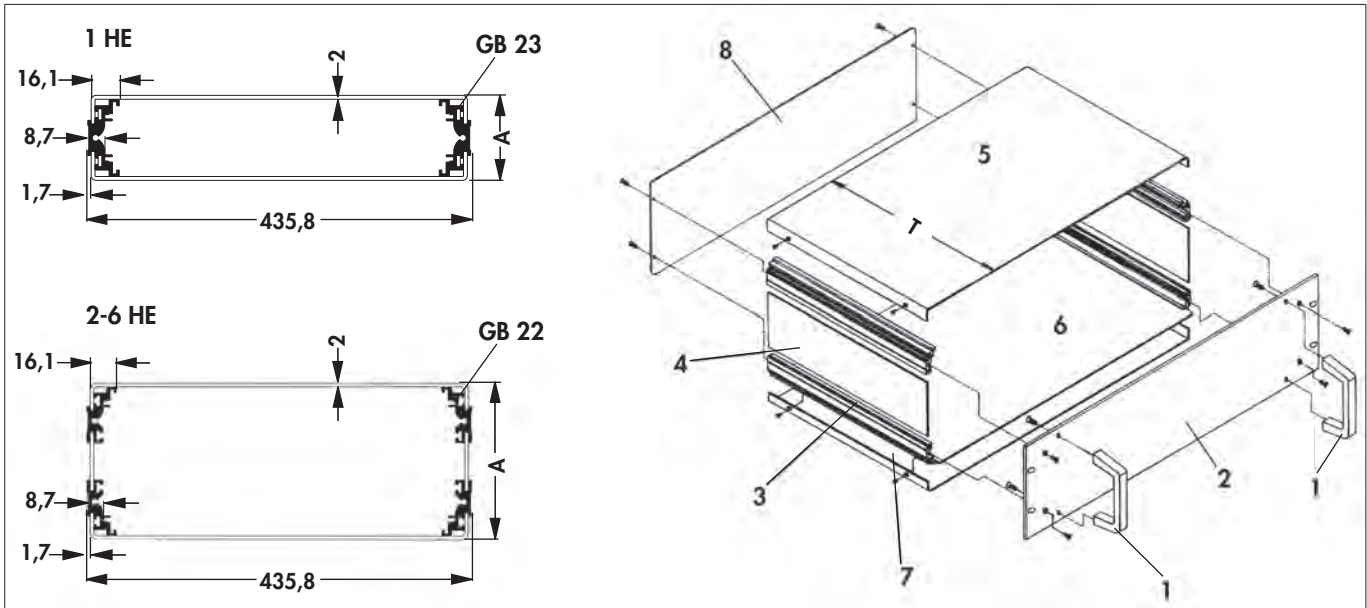


VESA ... V

- 19" plug-in box **VESA** for insertion of non-standardised components or circuit boards
- cover and bottom panels are screwed together laterally with edge profiles
- side panel at 1 U version made of side panel profile **GB 23**
- 2-6 U version with edge profiles **GB 22** and side panels
- front and rear panel from 1 to 3 U made of **AL-profile → N 67**
- front and rear panel for 4 U and more made from AL-plate
- guide grooves in the profile are used for the insertion of the mounting- or chassis panels **MPH**
- sliding-screw channel in the edge profiles used for mounting the carrier rail **TS CE**
- **contents of delivery:** front panel, side panels, edge profiles, rear panel, cover and bottom plate

19" plug-in box with removable cover panel

1 = handles; 2 = front panel; 3 = edge profile; 4 = side panel, 5 = cover panel; 6 = mounting panel; 7 = bottom panel; 8 = rear panel; ET= insert depth



art. no.	dim. [mm]		art. no.	dim. [mm]	
	A	ET		A	ET
VESA 1 260 ...	43.8	263	VESA 1 300 ...	43.8	303
VESA 2 260 ...	86.2	262	VESA 2 300 ...	86.2	302
VESA 3 260 ...	130.6		VESA 3 300 ...	130.6	
VESA 4 260 ...	175.0		VESA 4 300 ...	175.0	
VESA 5 260 ...	219.4		VESA 5 300 ...	219.4	
VESA 6 260 ...	264.0		VESA 6 300 ...	264.0	
VESA 1 280 ...	43.8		283	VESA 1 360 ...	
VESA 2 280 ...	86.2	282	VESA 2 360 ...	86.2	362
VESA 3 280 ...	130.6		VESA 3 360 ...	130.6	
VESA 4 280 ...	175.0		VESA 4 360 ...	175.0	
VESA 5 280 ...	219.4		VESA 5 360 ...	219.4	
VESA 6 280 ...	264.0		VESA 6 360 ...	264.0	

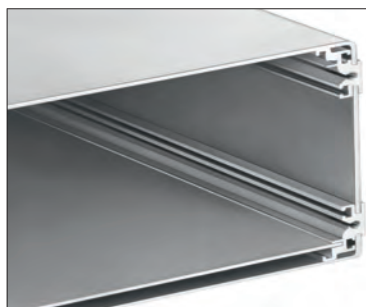
please indicate: ... accessories (optional)
G = handles
V = locking device
DL = cover panel with ventilation slots
BL = bottom panel with ventilation slots
L = cover and bottom panels with ventilation slots

surface: natural colour anodised

19" plug-in box with removable cover panel

Mounting plate

– perforations in the bottom panel are avoided by fixing devices on the mounting plate

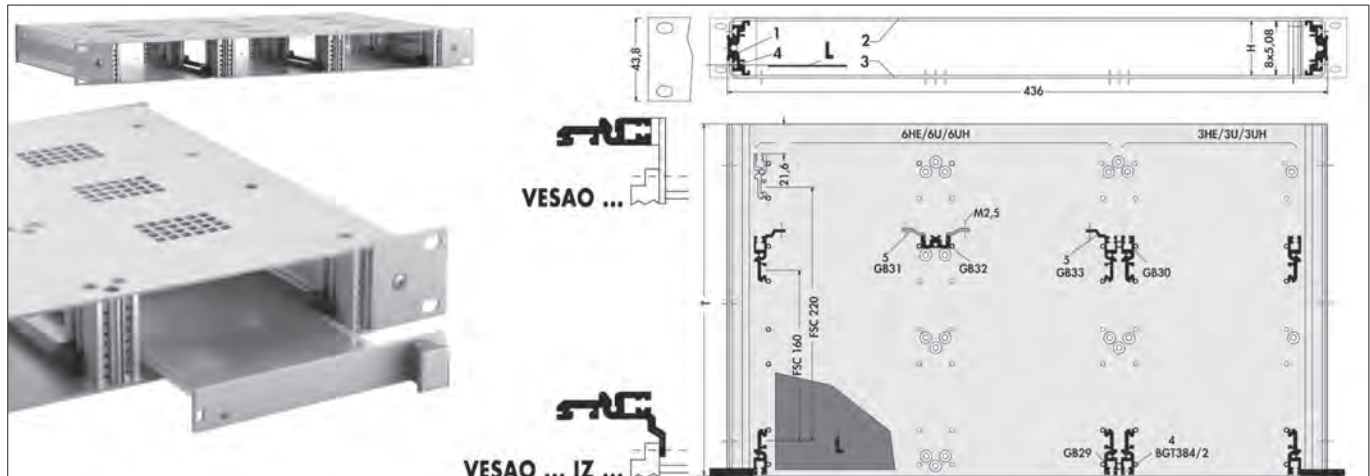


art. no.	dim. [mm] T	art. no.	dim. [mm] T
MPH 260	260	MPH 360	360
MPH 300	300		

19" plug-in box for horizontal installation of PCBs

- 19" plug-in box, 1 U, with removable aluminium cover and bottom panel
- edge profile, front and rear panel made of aluminium profile
- fully transparent passivated to insulate against electromagnetic interference
- installation of 3, 6 or 9 U Eurocards, with a horizontal depth of 160 or 220 mm
- mounting height of the module rails 8 HP; other dimensions on request
- **contents of delivery:** **1** = edge profile **GB 23**; **2** = cover panel (1.5 mm); **3** = bottom panel (1.5 mm); **4** = threaded rail; **5** = module rails 8 HP

L = PCB



art. no.	for Eurocards (U)	art. no.	for Eurocards (U)
VESAO 1 260 009 ...	1x9	VESAO 1 260 333 ...	3x3
VESAO 1 260 063 ...	1x6/ 1x3		
please indicate: ... rear module rail (optional) IZ = integrated Z-rail		... accessories (optional) G = handles L = cover and bottom panels with ventilation slots	