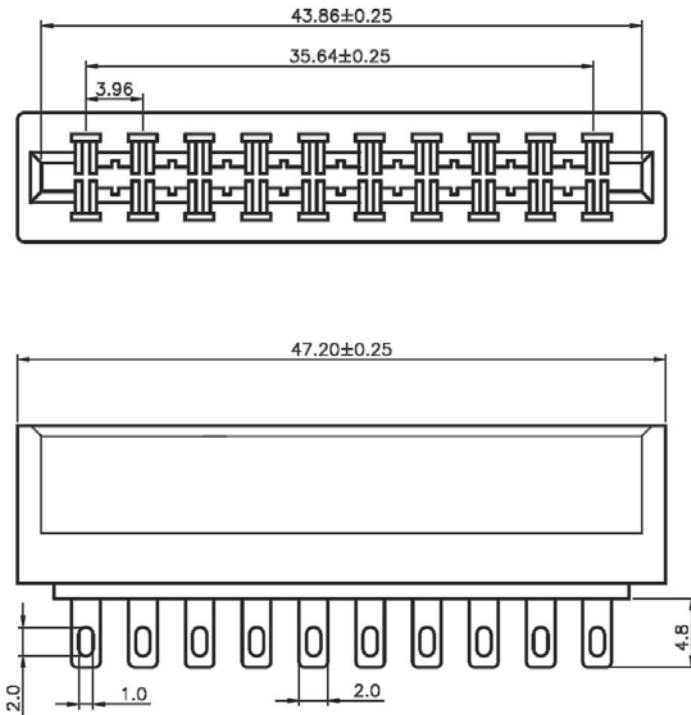


**3.96MM(0.156") CARDEDGE SLOT CONNECTOR SOLDER TYPE
SPACING OF ROWS=3.96MM**



SPECIFICATIONS

Voltage Current Rating: 3A 30V AC

Contact Resistance: 10m Ω Max.

Insulator Resistance: 1000M Ω Min.

Withstanding Voltage: 500V AC/Min.

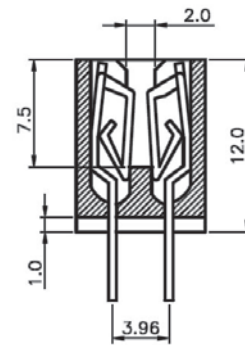
Operating Temperature: -55 $^{\circ}$ c to +105 $^{\circ}$ c

MATERIALS

Insulator: High Temperature Thermoplastic

Contact: Copper Alloy

All materials must be RoHS compliant.

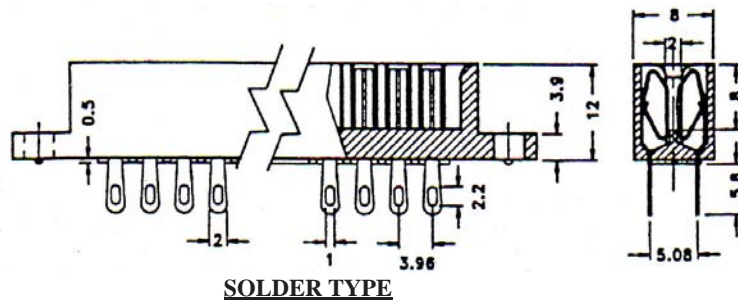
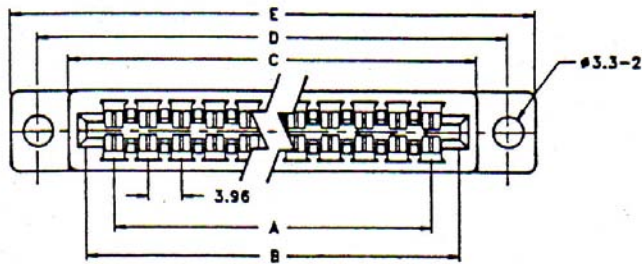


ORDERING INFORMATION:

P/N 3 9 6 C V - $\frac{xxx}{1}$ $\frac{G}{2}$ $\frac{U}{3}$

1. NO. OF CONTACTS:
010 ~ 084
2. CONTACT FINISH:
"G" FULL GOLD PLATED
3. INSULATOR COLOR:
"U" BLUE

3.96MM CARDEDGE SLOT CONNECTOR SOLDER TYPE SPACING OF ROWS=5.08MM



SPECIFICATIONS

Current Rating: 3.0 Amp
 Dielectric Withstanding: 500V AC
 Insulation Resistance: 5000MΩ Min
 Contact Resistance: 20mΩ Max.
 Operating Temperature: -40°C to + 105°C

MATERIALS

Insulation Material: P.B.T+30%GF, UL94V-0
 Contact Material: Phosphor Bronze or Brass
 All materials must be RoHS compliant.

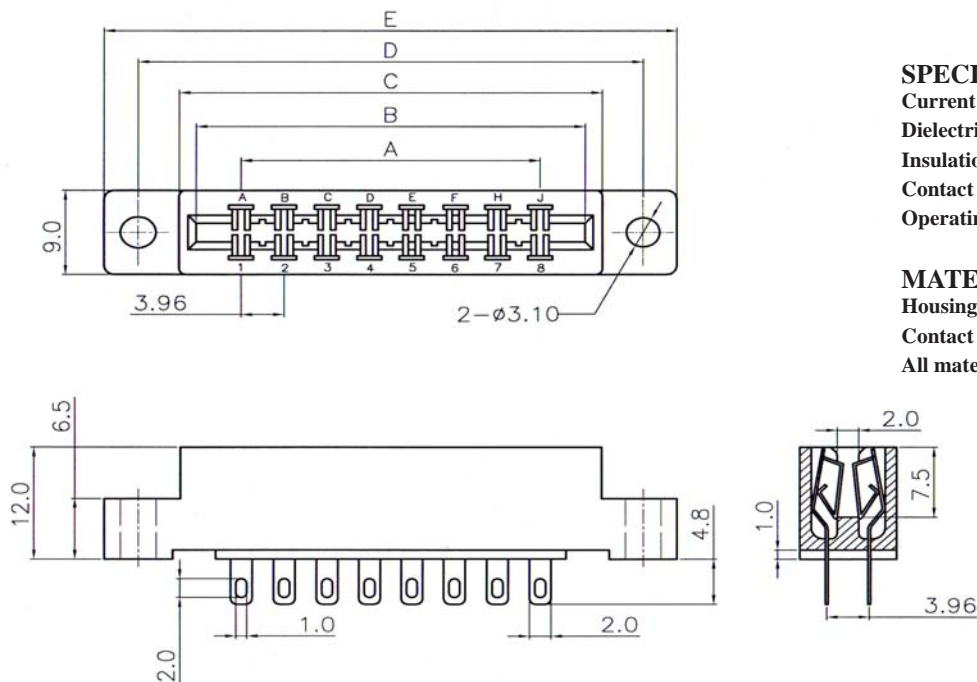
No. of Contacts	Dimensions(mm)				
	A	B	C	D	E
12	19.81	28.20	31.40	38.89	45.30
20	35.69	44.04	47.24	54.73	61.14
24	43.57	51.96	55.16	62.65	69.06
30	55.45	63.84	67.04	74.53	80.94
36	67.33	75.72	78.92	86.41	92.82
44	83.17	91.56	94.76	102.25	108.66
48	91.09	99.48	102.68	110.17	116.58
50	95.05	103.44	106.64	114.13	120.54
56	106.93	115.32	118.52	126.01	132.42
60	114.85	123.24	126.44	133.93	140.34
72	138.61	147.00	150.20	157.69	164.10

ORDERING INFORMATION:

P/N 3 9 6 C A - $\frac{x}{1} \frac{x}{2} \frac{x}{3} \frac{G}{2} \frac{U}{3}$

1. NO. OF CONTACTS:
010, 012, 016, 020, 024, 026, 028, 030,
032, 036, 040, 044, 046, 050, 056, 060,
062, 064, 070, 072, 084
2. CONTACT FINISH:
"G" FULL GOLD PLATED
3. INSULATOR COLOR:
"U" BLUE

3.96MM CARDEDGE SLOT CONNECTOR SOLDER TYPE SPACING OF ROWS= 3.96MM



SPECIFICATIONS

Current Rating: 3.0 Amp
Dielectric Withstanding: 500V AC
Insulation Resistance: 5000MΩ Min
Contact Resistance: 20mΩ Max.
Operating Temperature: -40°C to + 105°C

MATERIALS

Housing: PBT+30%GF, UL94V-0
Contact Material: Copper Alloy
All materials must be RoHS compliant.

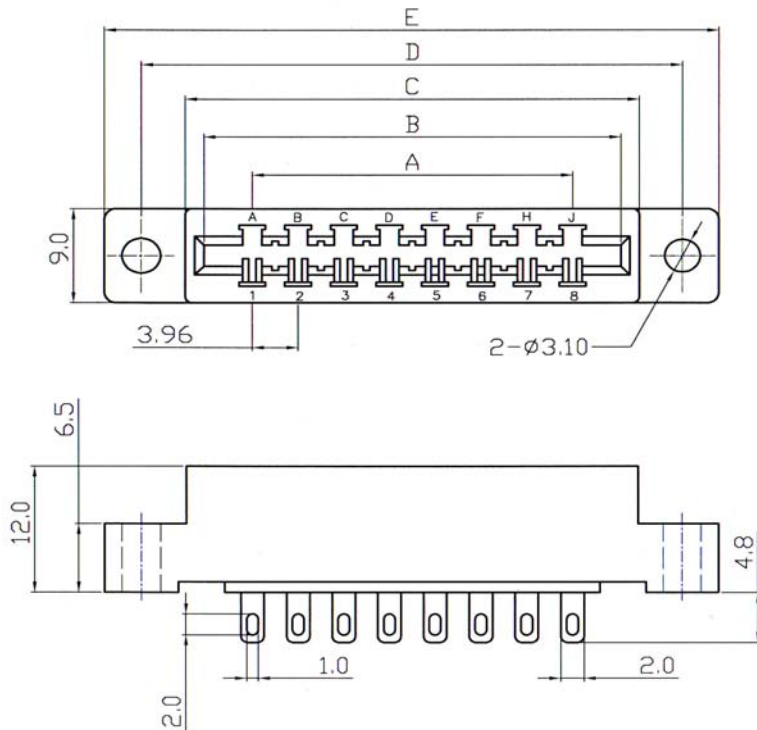
No. of Contacts	Dimensions(mm)					No. of Contacts	Dimensions(mm)				
	A	B	C	D	E		A	B	C	D	E
10	15.84	24.06	27.40	34.94	41.24	44	83.16	91.38	94.72	102.26	108.56
12	19.80	28.02	31.36	38.90	45.20	46	87.12	95.34	98.68	106.22	112.52
16	27.72	35.94	39.28	46.82	53.12	50	95.04	103.26	106.60	114.14	120.44
20	35.64	43.86	47.20	54.74	61.04	56	106.92	115.14	118.48	126.02	132.32
24	43.56	51.78	55.12	62.66	68.96	60	114.84	123.06	126.40	133.94	140.24
26	47.52	55.74	59.08	66.62	72.92	62	118.80	127.02	130.36	137.90	144.20
28	51.48	59.70	63.04	70.58	76.88	64	122.76	130.98	134.32	141.86	148.16
30	55.44	63.66	67.00	74.54	80.84	70	134.64	142.86	146.20	153.74	160.04
32	59.40	67.62	70.96	78.50	84.80	72	138.60	146.82	150.16	157.70	164.00
36	67.32	75.54	78.88	86.42	92.72	86	166.32	174.54	177.88	185.49	191.48
40	75.24	83.46	86.80	94.34	100.64						

ORDERING INFORMATION:

P/N 3 9 6 C S - $\frac{x}{1}$ $\frac{x}{2}$ $\frac{G}{3}$ U

1. NO. OF CONTACTS:
010 ~ 086
2. CONTACT FINISH:
"G" FULL GOLD PLATED
3. INSULATOR COLOR:
"B" BLACK
"U" BLUE (STANDARD)

3.96MM CARDEDGE SLOT CONNECTOR SINGLE ROW SOLDER TYPE



SPECIFICATIONS

Current Rating: 3.0 Amp
Dielectric Withstanding: 500V AC
Insulation Resistance: 5000MΩ Min
Contact Resistance: 20mΩ Max.
Operating Temperature: -40°C to + 105°C

MATERIALS

Housing: PBT, UL94V-0
Contact Material: Copper Alloy
 All materials must be RoHS compliant.

No. of Contacts	Dimensions(mm)					No. of Contacts	Dimensions(mm)				
	A	B	C	D	E		A	B	C	D	E
05	15.84	24.06	27.40	34.94	41.24	22	83.16	91.38	94.72	102.26	108.56
06	19.80	28.02	31.36	38.90	45.20	23	87.12	95.34	98.68	106.22	112.52
08	27.72	35.94	39.28	46.82	53.12	25	95.04	103.26	106.60	114.14	120.44
10	35.64	43.86	47.20	54.74	61.04	28	106.92	115.14	118.48	126.02	132.32
11	43.56	51.78	55.12	62.66	68.96	30	114.84	123.06	126.40	133.94	140.24
12	47.52	55.74	59.08	66.62	72.92	31	118.80	127.02	130.36	137.90	144.20
14	51.48	59.70	63.04	70.58	76.88	32	122.76	130.98	134.32	141.86	148.16
15	55.44	63.66	67.00	74.54	80.84	35	134.64	142.86	146.20	153.74	160.04
16	59.40	67.62	70.96	78.50	84.80	36	138.60	146.82	150.16	157.70	164.00
18	67.32	75.54	78.88	86.42	92.72	43	166.32	174.54	177.88	185.49	191.48
20	75.24	83.46	86.80	94.34	100.64						

ORDERING INFORMATION:

P/N 3 9 6 C T - $\frac{xxx}{1}$ $\frac{Gx}{23}$

1. NO. OF CONTACTS:
005 ~ 043
2. CONTACT FINISH:
"G" FULL GOLD PLATED
3. INSULATOR COLOR:
"B" BLACK
"U" BLUE (STANDARD)

3.96MM CARDEDGE SLOT CONNECTOR STRAIGHT DIP TYPE SPACING OF ROWS= 3.96MM

SPECIFICATIONS

Current Rating: 3.0 Amp

Dielectric Withstanding: 800V AC

Insulation Resistance: 5000MΩ Min

Contact Resistance: 20mΩ Max.

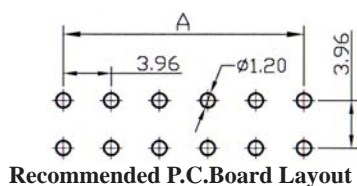
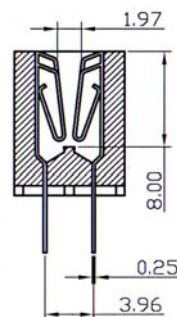
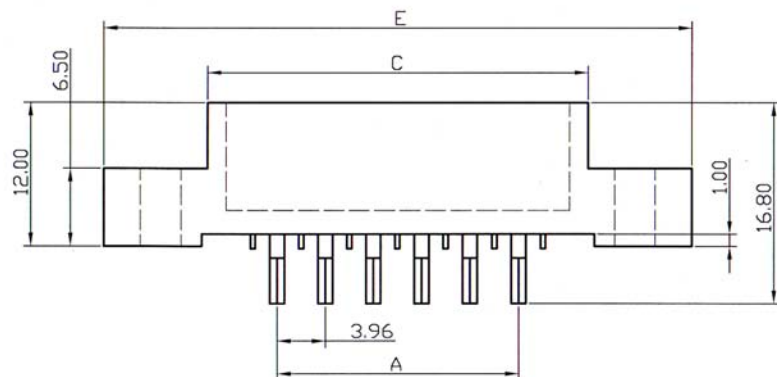
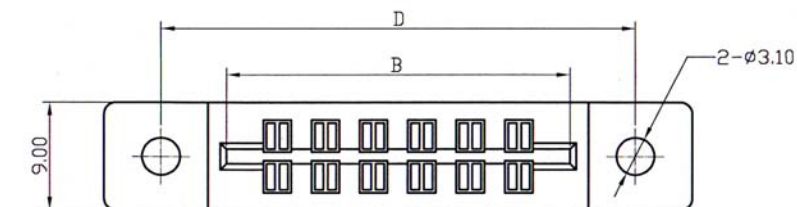
Operating Temperature: -55°C to + 105°C

MATERIALS

Housing: PBT, UL94V-0

Contact Material: Copper Alloy

All materials must be RoHS compliant.



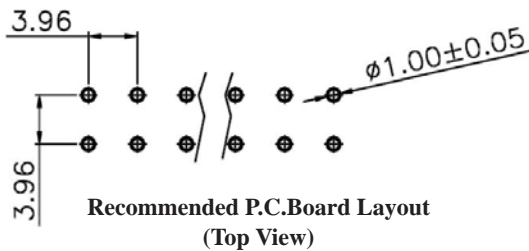
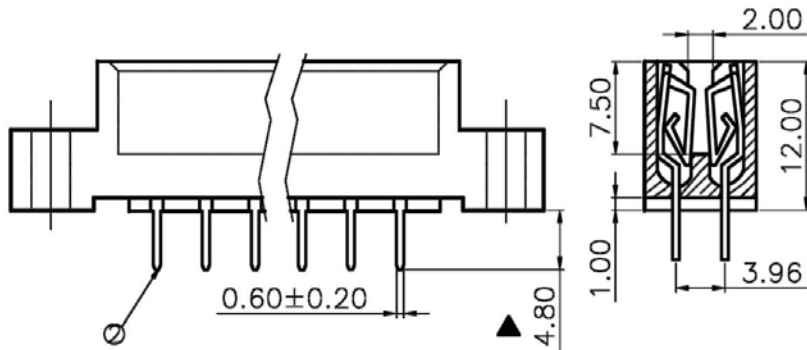
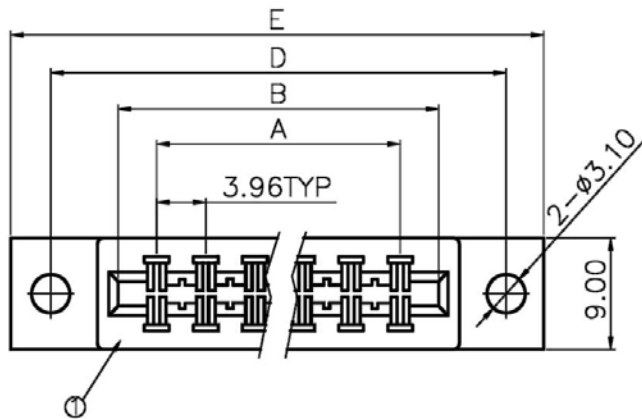
No. of Contacts	Dimensions(mm)				
	A	B	C	D	E
10	15.84	24.06	27.40	34.94	41.20
12	19.80	28.02	31.36	38.90	45.16
16	27.72	35.94	39.28	46.82	53.08
20	35.64	43.86	47.20	54.74	61.00
24	43.56	51.78	55.12	62.66	68.92
30	55.44	63.66	67.00	74.54	80.80
36	67.32	75.54	78.88	86.42	92.68
44	83.16	91.38	94.72	102.26	108.52
48	91.08	99.30	102.26	110.18	116.44
56	106.92	115.14	118.48	126.02	132.28
60	114.84	123.06	126.40	133.94	140.20
72	138.60	146.82	150.16	157.77	163.96
86	191.48	185.49	177.88	174.54	166.32

ORDERING INFORMATION:

P/N 3 9 6 C C - $\frac{x x x}{1} \frac{G x}{2 3}$

1. NO. OF CONTACTS:
010, 012, 016, 020, 024, 030, 036, 044,
048, 056, 060, 072, 086
2. CONTACT FINISH:
"G" FULL GOLD PLATED
3. INSULATOR COLOR:
"B" BLACK
"U" BLUE (STANDARD)

**3.96MM(0.156") CARDEDGE SLOT CONNECTOR STRAIGHT DIP TYPE
SPACING OF ROWS=3.96MM**



SPECIFICATIONS

- Voltage Current Rating:** 3A 30V AC
- Contact Resistance:** 10mΩ Max.
- Insulator Resistance:** 1000MΩ Min.
- Withstanding Voltage:** 500V AC/Min.
- Operating Temperature:** -55°c to +105°c

MATERIALS

- Insulator:** PBT, UL94V-0
- Contact:** Copper Alloy
- All materials must be RoHS compliant.**

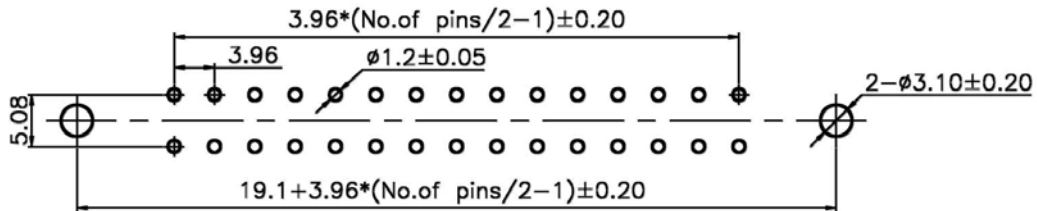
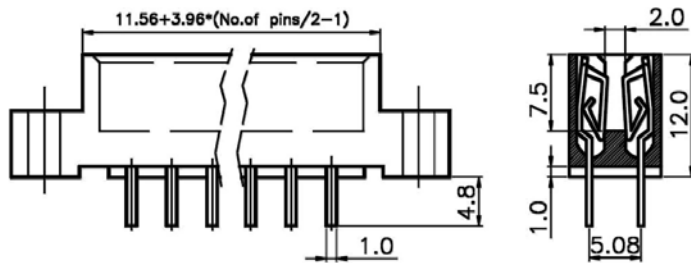
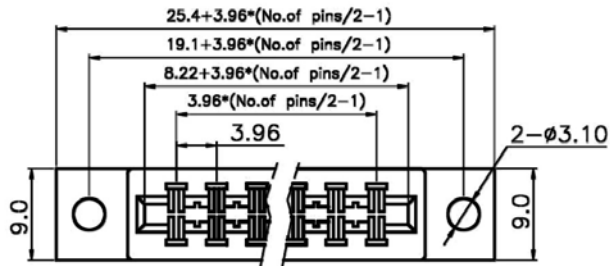
NO. OF CONTACTS	DIMENSIONS(MM)				
	A	B	C	D	E
10	15.84	24.06	27.40	34.94	41.24
12	19.80	28.02	31.36	38.90	45.20
16	27.72	35.94	39.28	46.82	53.12
20	35.64	43.86	47.20	54.74	61.04
22	39.60	47.82	51.16	58.70	65.00
24	43.56	51.78	55.12	62.66	68.96
28	51.48	59.70	63.04	70.58	76.88
30	55.44	63.66	67.00	74.54	80.84
32	59.40	67.62	70.96	78.50	84.80
36	67.32	75.54	78.88	86.42	92.72
40	75.24	83.46	86.80	94.34	100.64
44	83.16	91.38	94.72	102.26	108.56
46	87.12	95.34	98.68	106.22	112.52
50	95.04	103.26	106.60	114.14	120.44
56	106.92	115.14	118.48	126.02	132.32
60	114.84	123.06	126.40	133.94	140.24
62	118.80	127.02	130.36	137.90	144.20
64	122.76	130.98	134.32	141.86	148.16
70	134.64	142.86	146.20	153.74	160.04
72	138.60	146.82	150.16	157.70	164.00
86	166.32	174.54	177.88	185.49	191.48

ORDERING INFORMATION:

P/N 3 9 6 C U - xxx G U
1 2 3

1. NO. OF CONTACTS:
010 ~ 086
2. CONTACT FINISH:
"G" FULL GOLD PLATED
3. INSULATOR COLOR:
"U" BLUE

**3.96MM(0.156") CARDEDGE SLOT CONNECTOR STRAIGHT DIP TYPE
SPACING OF ROWS=5.08MM**



Recommended P.C.Board Layout
(Top View)

SPECIFICATIONS

Voltage Current Rating: 3A 30V AC
Contact Resistance: 10mΩ Max.
Insulator Resistance: 1000MΩ Min.
Withstanding Voltage: 500V AC/Min.
Operating Temperature: -55°C to +105°C

MATERIALS

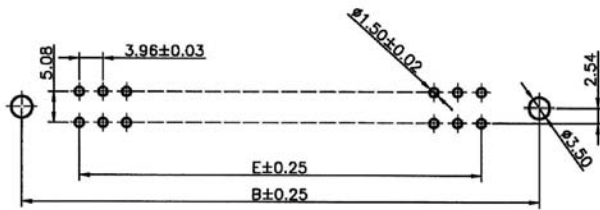
Insulator: PBT, UL94V-0
Contact: Copper Alloy
All materials must be RoHS compliant.

ORDERING INFORMATION:

P/N 3 9 6 C M - $\frac{xx}{1}$ $\frac{x}{2}$ $\frac{G}{3}$ U

1. NO. OF CONTACTS:
010, 012, 016, 020, 024, 030, 036,
044, 048, 056, 060, 072, 086
2. CONTACT FINISH:
"G" FULL GOLD PLATED
3. INSULATOR COLOR:
"U" BLUE

3.96MM(0.156") CARDEDGE SLOT CONNECTOR STRAIGHT DIP TYPE SPACING OF ROWS=5.08MM



Recommended P.C.Board Layout
(Top View)

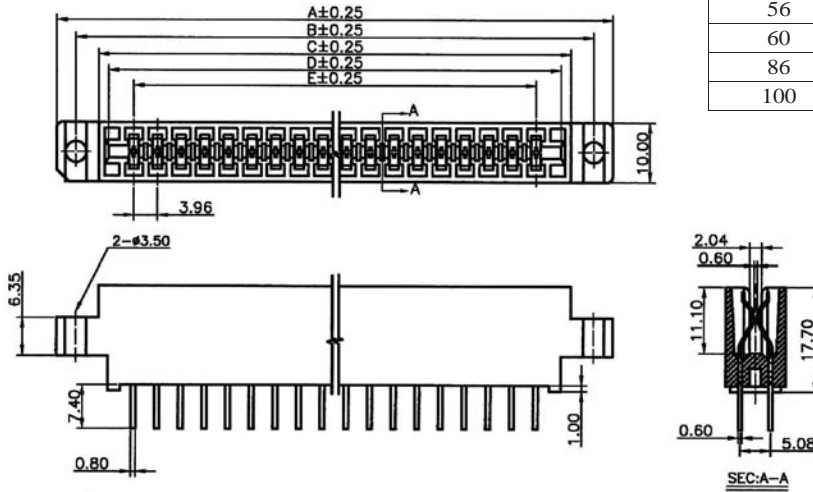
SPECIFICATIONS

Voltage Current Rating: 3A 30V AC
 Contact Resistance: 20mΩ Max.
 Insulator Resistance: 5000MΩ Min.
 Withstanding Voltage: 800V AC/Min.
 Operating Temperature: -55°C to +105°C

MATERIALS

Insulator: PBT, UL94V-0
 Contact: Phosphor Bronze
 All materials must be RoHS compliant.

NO. OF CONTACTS	DIMENSIONS(MM)				
	A	B	C	D	E
36	93.02	86.62	79.02	75.72	67.32
40	100.94	94.54	86.94	83.64	75.24
44	108.86	102.46	94.86	91.56	83.16
56	132.2	126.22	118.62	115.32	106.92
60	140.54	134.14	126.54	123.24	114.84
86	192.02	185.62	178.02	174.72	166.32
100	219.74	213.34	205.74	202.44	194.04

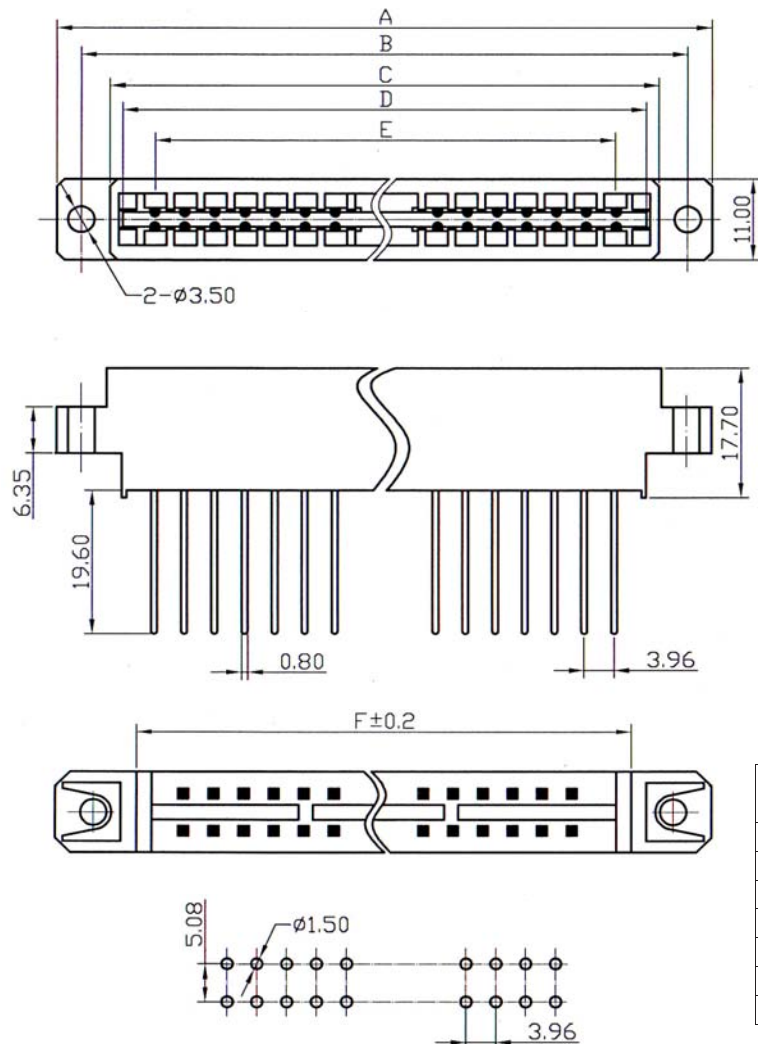


ORDERING INFORMATION:

P/N 3 9 6 C B - $\frac{x x x}{1}$ $\frac{S B}{2 3}$

1. NO. OF CONTACTS:
034, 040, 044, 056, 060, 086, 100
2. CONTACT FINISH:
"S" SELECTIVE GOLD PLATED
3. INSULATOR COLOR:
"B" BLACK

3.96MM CARDEDGE SLOT CONNECTOR STRAIGHT DIP TYPE SPACING OF ROWS= 5.08MM



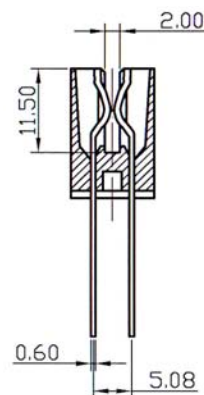
Recommended P.C.Board Layout

SPECIFICATIONS

Current Rating: 3.0 Amp
Dielectric Withstanding: 800V AC
Insulation Resistance: 5000MΩ Min
Contact Resistance: 20mΩ Max.
Operating Temperature: -55°C to + 105°C

MATERIALS

Housing: PBT, UL94V-0
Contact Material: Copper Alloy
 All materials must be RoHS compliant.



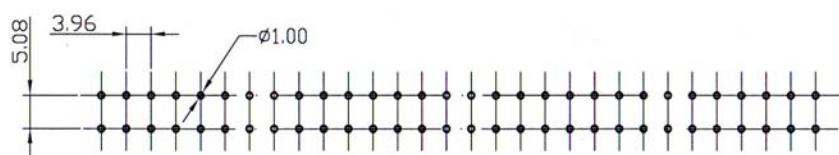
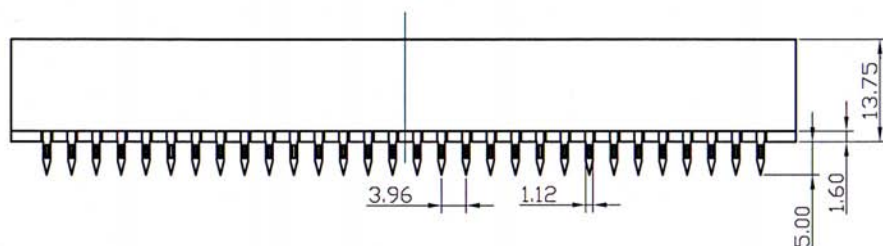
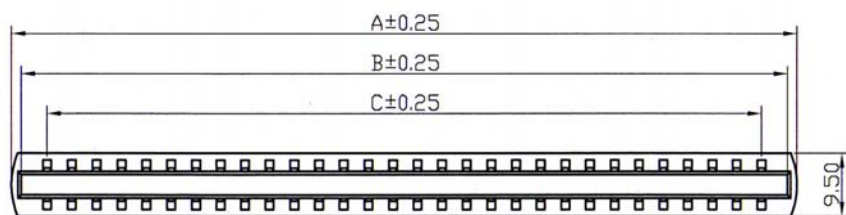
No. of Contacts	Dimensions(mm)				
	A	B	C	D	E
36	93.02	86.62	79.02	75.72	67.32
40	100.94	94.54	86.94	83.64	75.24
44	108.86	102.46	94.86	91.56	83.16
56	132.62	126.22	118.62	115.32	106.92
60	140.54	134.14	126.54	123.24	114.84
86	192.02	185.62	178.02	174.72	166.32
100	219.74	213.34	205.74	202.44	194.04

ORDERING INFORMATION:

P/N 3 9 6 C E - $\frac{x x x}{1}$ $\frac{G x}{2 3}$

1. NO. OF CONTACTS:
036, 040, 044, 056, 060, 086, 100
2. CONTACT FINISH:
"G" FULL GOLD PLATED
3. INSULATOR COLOR:
"B" BLACK
"U" BLUE

3.96MM CARDEDGE SLOT CONNECTOR PRESS FIT TYPE SPACING OF ROWS= 5.08MM



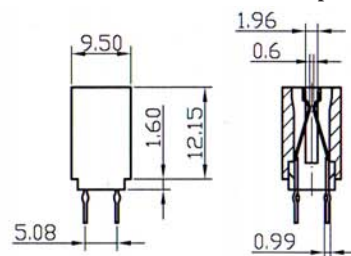
Recommended P.C.Board Layout

SPECIFICATIONS

Current Rating: 3.0 Amp
Dielectric Withstanding: 800V AC
Insulation Resistance: 5000MΩ Min
Contact Resistance: 20mΩ Max.
Operating Temperature: -55°C to + 105°C

MATERIALS

Housing: PBT, UL94V-0
Contact Material: Copper Alloy
 All materials must be RoHS compliant.



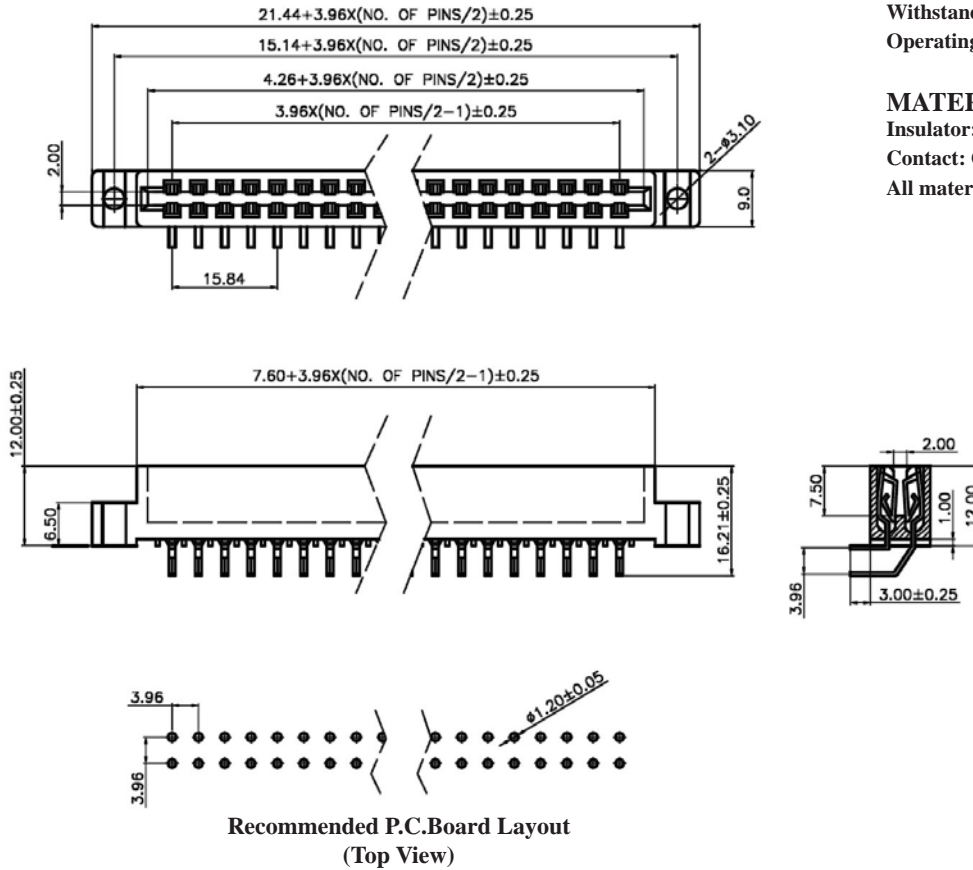
No. of Contacts	Dimensions(mm)		
	A	B	C
56	118.30	115.20	106.92
60	126.22	123.12	114.84
72	149.98	146.88	138.60
80	165.82	162.72	154.44
86	177.70	174.60	166.32
100	205.42	202.32	194.04

ORDERING INFORMATION:

P/N 3 9 6 C D - $\frac{x x x}{1}$ $\frac{G}{2}$ $\frac{x}{3}$

1. NO. OF CONTACTS:
056, 060, 072, 080, 086, 100
2. CONTACT FINISH:
"G" FULL GOLD PLATED
3. INSULATOR COLOR:
"B" BLACK
"U" BLUE

**3.96MM(0.156") CARDEDGE SLOT CONNECTOR RIGHT ANGLE DIP TYPE
SPACING OF ROWS=3.96MM**



SPECIFICATIONS

Voltage Current Rating: 3A 30V AC
Contact Resistance: 10mΩ Max.
Insulator Resistance: 1000MΩ Min.
Withstanding Voltage: 500V AC/Min.
Operating Temperature: -55°C to +105°C

MATERIALS

Insulator: PBT, UL94V-0
Contact: Copper Alloy
 All materials must be RoHS compliant.

ORDERING INFORMATION:

P/N 3 9 6 C L - $\frac{x}{1} \frac{x}{2} \frac{x}{3} \frac{G}{2} \frac{U}{3}$

1. NO. OF CONTACTS:
010, 012, 016, 020, 024, 030, 036,
044, 048, 056, 060, 072, 086
2. CONTACT FINISH:
"G" FULL GOLD PLATED
3. INSULATOR COLOR:
"U" BLUE