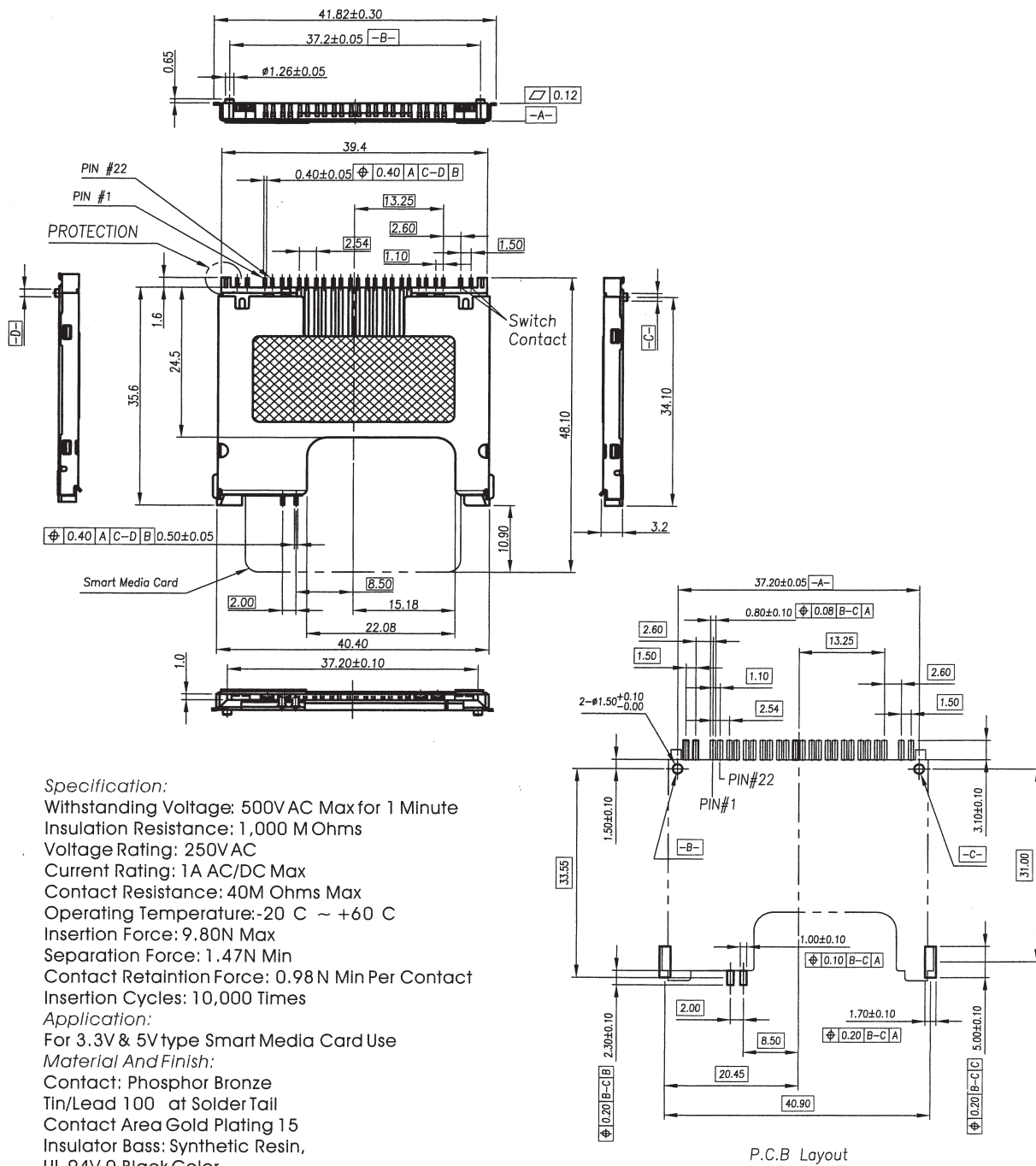


# SMART MEDIA CARD CONNECTOR (1)



## Specification:

Withstanding Voltage: 500V AC Max for 1 Minute  
 Insulation Resistance: 1,000 M Ohms  
 Voltage Rating: 250V AC  
 Current Rating: 1A AC/DC Max  
 Contact Resistance: 40M Ohms Max  
 Operating Temperature:  $-20\text{ C} \sim +60\text{ C}$   
 Insertion Force: 9.80N Max  
 Separation Force: 1.47N Min  
 Contact Retention Force: 0.98N Min Per Contact  
 Insertion Cycles: 10,000 Times

## Application:

For 3.3V & 5V type Smart Media Card Use

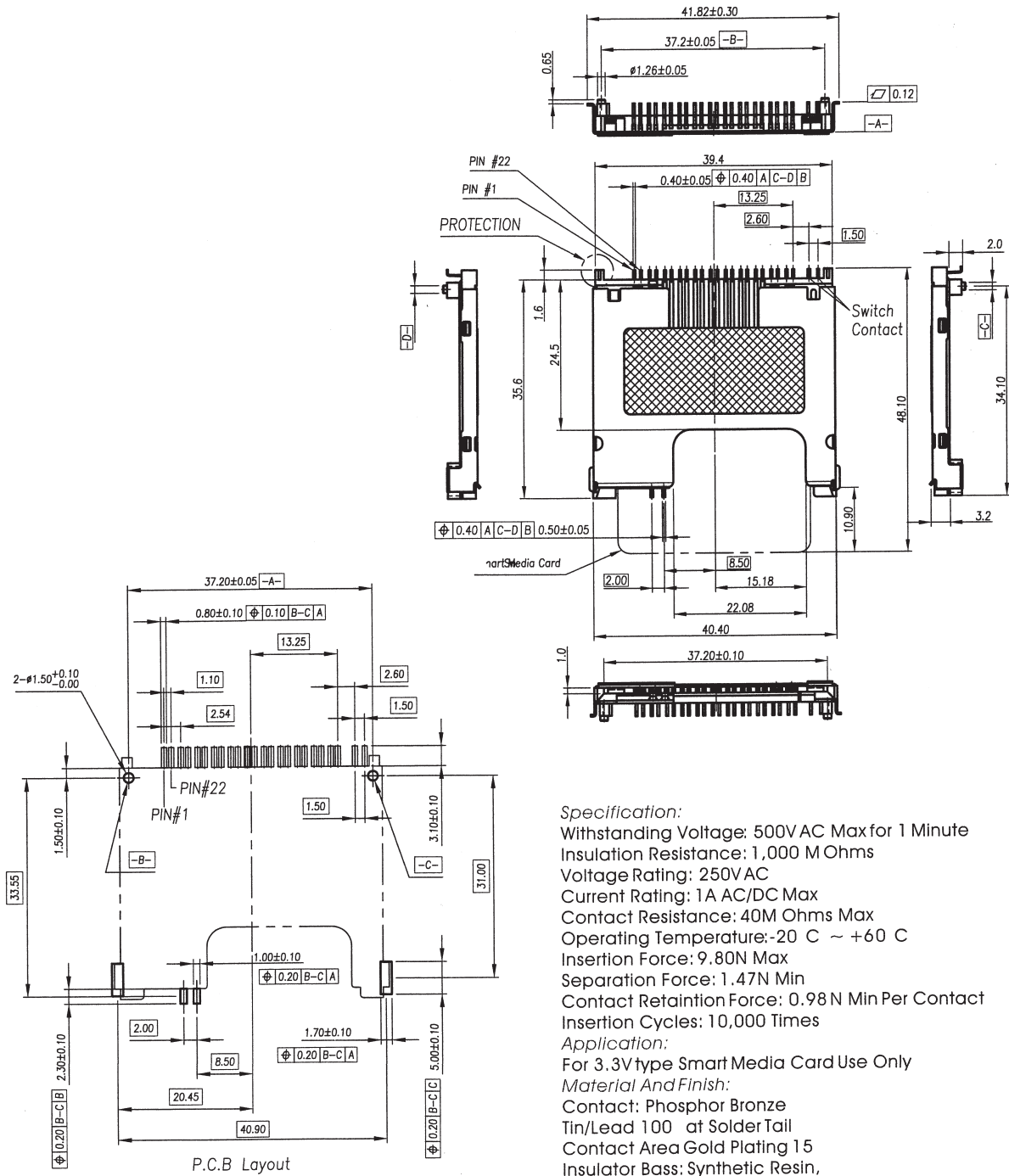
## Material And Finish:

Contact: Phosphor Bronze  
 Tin/Lead 100 at Solder Tail  
 Contact Area Gold Plating 15  
 Insulator Bass: Synthetic Resin,  
 UL 94V-0 Black Color  
 Cover: Brass, Nickel Plating For All

## P/N MCD-604SM

SMART MEDIA CARD CONNECTOR  
 METAL COVER  
 3.3V & 5V CARD COMPATIBLE TYPE

# SMART MEDIA CARD CONNECTOR (2)



**Specification:**  
 Withstanding Voltage: 500V AC Max for 1 Minute  
 Insulation Resistance: 1,000 M Ohms  
 Voltage Rating: 250V AC  
 Current Rating: 1A AC/DC Max  
 Contact Resistance: 40M Ohms Max  
 Operating Temperature:  $-20\text{ C} \sim +60\text{ C}$   
 Insertion Force: 9.80N Max  
 Separation Force: 1.47N Min  
 Contact Retention Force: 0.98 N Min Per Contact  
 Insertion Cycles: 10,000 Times

**Application:**  
 For 3.3V type Smart Media Card Use Only

**Material And Finish:**  
 Contact: Phosphor Bronze  
 Tin/Lead 100 at Solder Tail  
 Contact Area Gold Plating 15  
 Insulator Bass: Synthetic Resin,  
 UL 94V-0 Black Color  
 Cover: Brass, Nickel Plating For All

**P/N MCD-606SM**  
 SMART MEDIA CARD CONNECTOR  
 METAL COVER  
 3.3V CARD STAND OFF 2.0MM TYPE