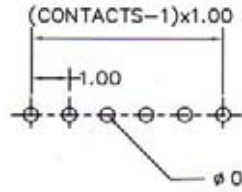
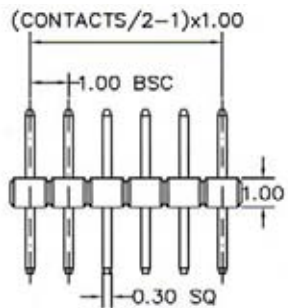
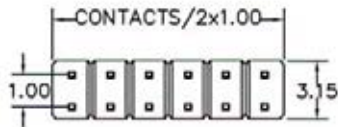
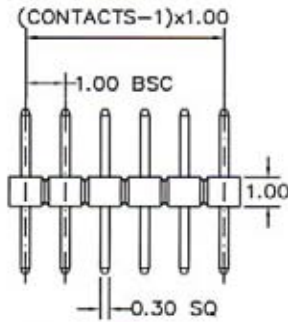
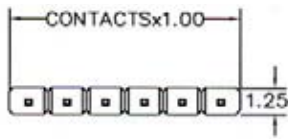
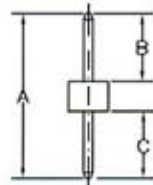


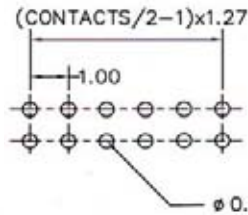
1.00MM(0.039") PIN HEADER STRAIGHT TYPE PROFILE= 1.00MM



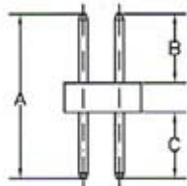
Recommended P.C.Board Layout



SINGLE ROW



Recommended P.C.Board Layout



DOUBLE ROW

SPECIFICATIONS

- Current Rating: 3.0 Amp
- Dielectric Withstand: 1000V AC
- Insulator Resistance: 1000 MΩ min.
- Contact Resistance: 20mΩ Max.
- Operating Temperature: -55°C to + 105°C

MATERIALS

- Insulator: Thermoplastic, UL94V-0 Nylon-6T
- Contacts: Copper Alloy
- All materials must be RoHS compliant.

SINGLE ROW	DOUBLE ROW	A	B	C
PG	PH	6.0	3.0	2.0
PJ	PM	4.1	1.9	1.2
PK	PN	10.7	3.2	6.5
QB	PX	5.8	3.3	1.5
PB	PC	6.3	2.7	2.6
PE	PF	7.0	3.0	3.0
PQ	QC	5.5	2.5	2.0

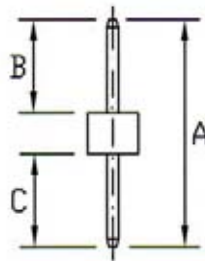
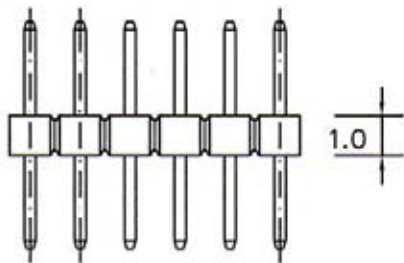
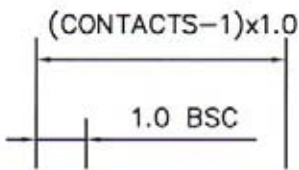
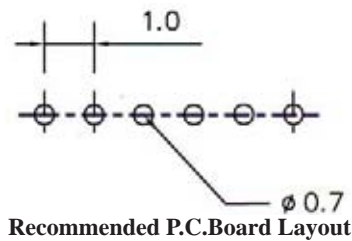
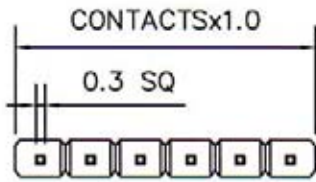
ORDERING INFORMATION:

P/N 1 0 0 $\frac{xx}{1}$ - $\frac{xxx}{2}$ $\frac{G}{3}$ B

1. TERMINAL TYPE:
PG, PJ, PK, QB, PB, PE, PQ,
PH, PM, PN, PX, PC, PF, QC
2. NO. OF CONTACTS:
002 ~ 050 FOR SINGLE ROW
004 ~ 100 FOR DOUBLE ROW
3. CONTACT FINISH:
"G" FULL GOLD PLATED

NOTE: SEE NEXT PAGES FOR CUSTOMER'S DESIGNS!

1.00MM(0.039") PIN HEADER SINGLE ROW STRAIGHT TYPE PROFILE=1.00MM



SPECIFICATIONS

Current Rating: 1.0 Amp
Dielectric Withstand: 600V AC
Insulator Resistance: 500 MΩ min.
Contact Resistance: 20mΩ Max.
Operating Temperature: -40°C to +105°C
Max Process Temp: 230°C for 30-60 sec.
 (260°C for 10 sec.)

MATERIALS

Insulator: Polyester, UL94V-0
 Nylon-6T
Contacts: Brass
 All materials must be RoHS compliant.

ORDERING INFORMATION:

CODE: 1 0 1 1 S 6 - A/B/C - x x x x B

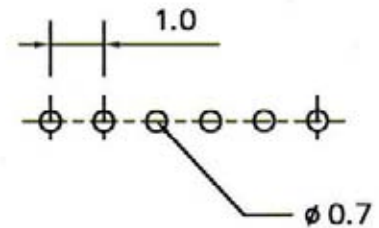
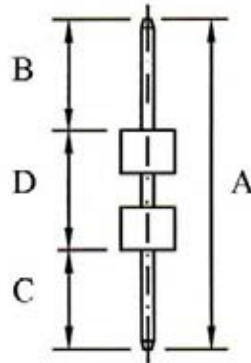
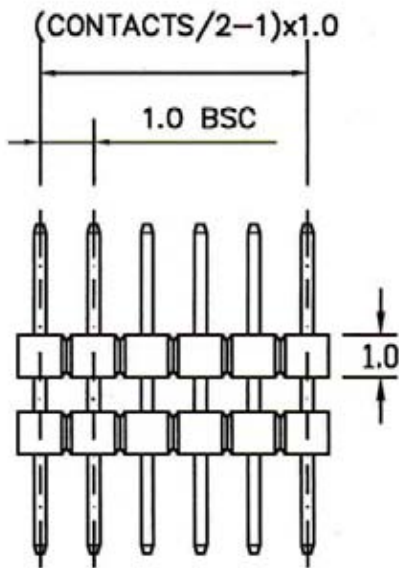
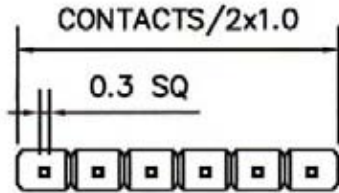
PLEASE GIVE US A CODE, THEN WE WILL GIVE YOU

P/N P x x x x x x x - x x x x B

1. EXTERIOR CODE:
1S6
2. DIMENSION A/B/C (UNIT: mm)
3. NO. OF CONTACTS:
002 ~ 050
4. CONTACT FINISH:
"G" FULL GOLD PLATED
"S" SELECTIVE GOLD PLATED
"T" FULL TIN PLATED

**DIMENSIONI
SPECIALI**

**1.00MM(0.039") PIN HEADER SINGLE ROW DOUBLE BODY STRAIGHT DIP TYPE
PROFILE=1.00MM**



Recommended P.C.Board Layout

P/N	A	B	C	D
PZ	6.80	2.00	1.60	3.20
QV	20.90	5.00	1.90	14.00
QW	11.00	2.00	2.50	6.50

ORDERING INFORMATION:

P/N 100 $\frac{xx}{1} - \frac{xxx}{2} \frac{x}{3} B$

1. CONTACT TYPE:
PZ, QV, QW
2. NO. OF CONTACTS:
002 ~ 050
3. CONTACT FINISH:
"G" FULL GOLD PLATED
"S" SELECTIVE GOLD PLATED
"T" FULL TIN PLATED

NOTE: SEE NEXT PAGES FOR CUSTOMER'S DESIGNS!

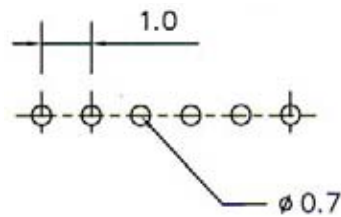
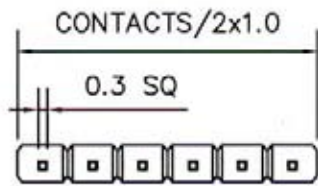
SPECIFICATIONS

- Current Rating: 1.0 A
- Contact Resistance: 20mΩ Max.
- Insulator Resistance: 500MΩ Min.
- Withstanding Voltage: 600V AC/Min.
- Operating Temperature: -40°C to +105°C

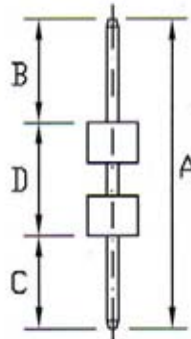
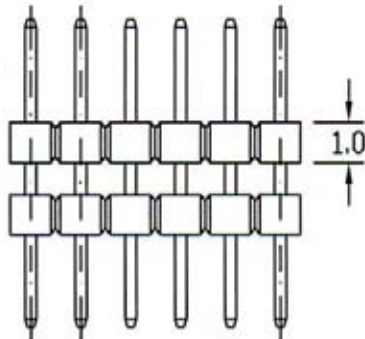
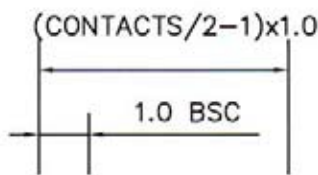
MATERIALS

- Insulator: NY6T UL94V-0, Black
- Contact: Brass
- All materials must be RoHS compliant.

1.00MM(0.039") PIN HEADER SINGLE ROW STRAIGHT TYPE PROFILE=1.00MM



Recommended P.C.Board Layout



SPECIFICATIONS

- Current Rating: 1.0 Amp
- Dielectric Withstand: 600V AC
- Insulator Resistance: 500 MΩ min.
- Contact Resistance: 20mΩ Max.
- Operating Temperature: -40°C to +105°C
- Max Process Temp: 230°C for 30-60 sec.
(260°C for 10 sec.)

MATERIALS

- Insulator: Polyester, UL94V-0
Nylon-6T
- Contacts: Brass
- All materials must be RoHS compliant.

ORDERING INFORMATION:

CODE: 1 0 1 1 S 8 - A/B/C/D - x x x x B

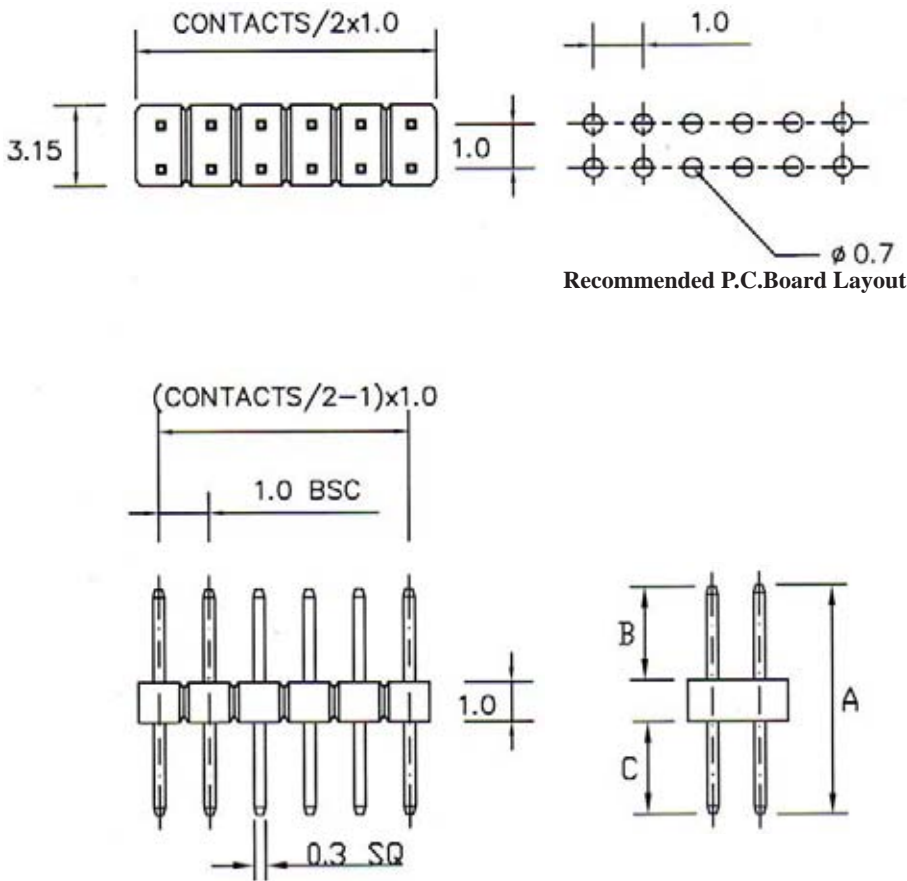
PLEASE GIVE US A CODE, THEN WE WILL GIVE YOU

P/N P x x x x x x x - x x x x B

1. EXTERIOR CODE:
1S8
2. DIMENSION A/B/C/D (UNIT: mm)
3. NO. OF CONTACTS:
002 ~ 050
4. CONTACT FINISH:
"G" FULL GOLD PLATED
"S" SELECTIVE GOLD PLATED
"T" FULL TIN PLATED

**DIMENSIONI
SPECIALI**

1.00MM(0.039") PIN HEADER DOUBLE ROW STRAIGHT TYPE PROFILE=1.00MM



SPECIFICATIONS

Current Rating: 1.0 Amp
Dielectric Withstand: 600V AC
Insulator Resistance: 500 MΩ min.
Contact Resistance: 20mΩ Max.
Operating Temperature: -40°C to + 105°C
Max Process Temp: 230°C for 30-60 sec.
 (260°C for 10 sec.)

MATERIALS

Insulator: Polyester, UL94V-0
 Nylon-6T
Contacts: Brass
 All materials must be RoHS compliant.

ORDERING INFORMATION:

CODE: 1 0 0 2 S 6 - A/B/C - x x x x B

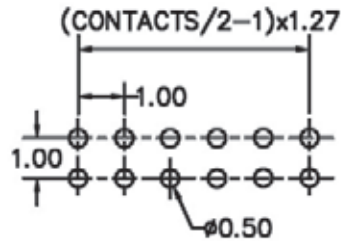
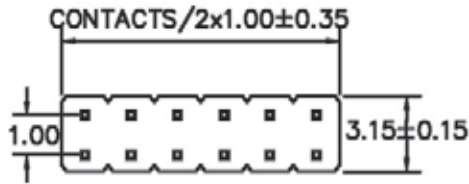
PLEASE GIVE US A CODE, THEN WE WILL GIVE YOU

P/N P x x x x x x x - x x x x B

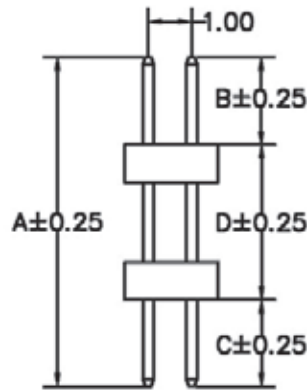
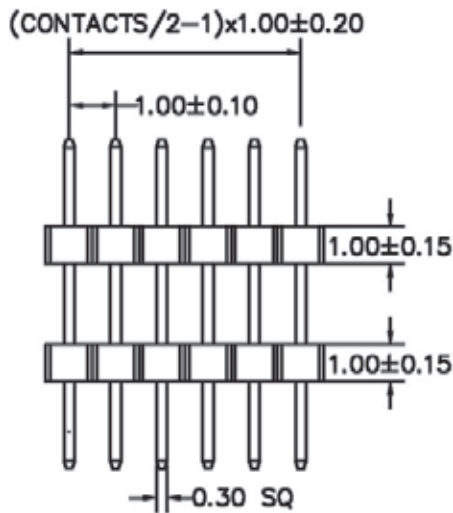
1. EXTERIOR CODE:
2S6
2. DIMENSION A/B/C (UNIT: mm)
3. NO. OF CONTACTS:
004 ~ 100
4. CONTACT FINISH:
"G" FULL GOLD PLATED
"S" SELECTIVE GOLD PLATED
"T" FULL TIN PLATED

**DIMENSIONI
SPECIALI**

1.00MM(0.039") PIN HEADER DOUBLE ROW STRAIGHT DIP TYPE PROFILE=1.00MM



Recommended P.C.Board Layout



SPECIFICATIONS

Current Rating: 1 A
 Contact Resistance: 20mΩ Max.
 Insulator Resistance: 5000MΩ Min.
 Withstanding Voltage: 1000V AC/Min.
 Operating Temperature: -55°C to +105°C

MATERIALS

Insulator: NY6T UL94V-0, Black
 Contact: Copper Alloy
 All materials must be RoHS compliant.

CODE	A	B	C	D
QN	6.60	1.80	2.00	2.80
QZ	11.00	2.00	2.50	6.50

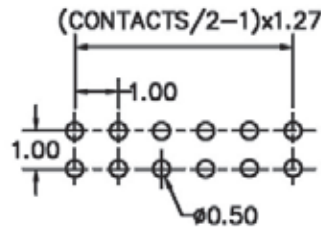
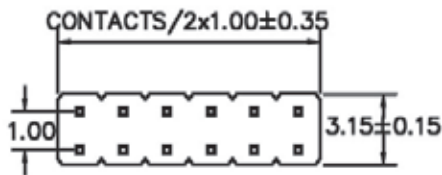
ORDERING INFORMATION:

P/N 1 0 0 $\frac{xx}{1}$ - $\frac{xxx}{2}$ $\frac{x}{3}$ B

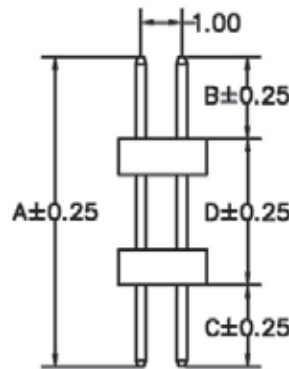
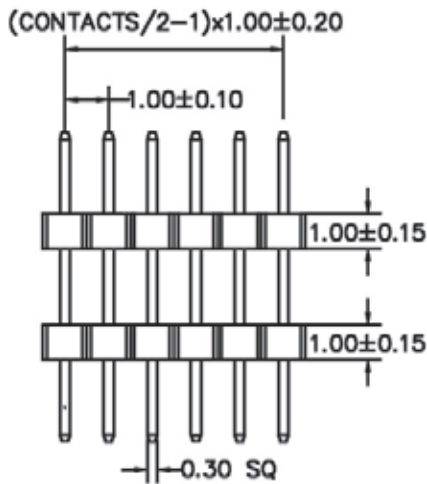
- PIN LENGTH:
QN, QZ
- NO. OF CONTACTS:
004 ~ 100
- CONTACT FINISH:
"G" FULL GOLD PLATED
"S" SELECTIVE GOLD PLATED
"T" FULL TIN PLATED

NOTE: SEE NEXT PAGES FOR CUSTOMER'S DESIGN!

**1.00MM (0.039") PIN HEADER DOUBLE ROW STRAIGHT DIP TYPE
PROFILE=1.00MM**



Recommended P.C.Board Layout



SPECIFICATIONS

Current Rating: 1 A
 Contact Resistance: 20mΩ Max.
 Insulator Resistance: 5000MΩ Min.
 Withstanding Voltage: 1000V AC/Min.
 Operating Temperature: -55°C to +105°C

MATERIALS

Insulator: NY6T UL94V-0, Black
 Contact: Copper Alloy
 All materials must be RoHS compliant.

ORDERING INFORMATION:

CODE: 1 0 0 2 S 8 - A/B/C/D - x x x x B
 1 2 3 4

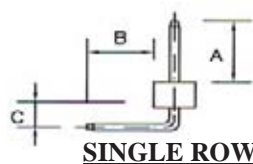
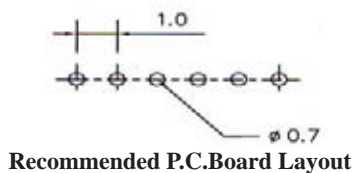
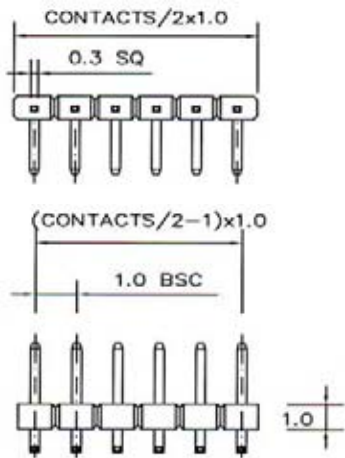
PLEASE GIVE US A CODE, THEN WE WILL GIVE YOU

P/N P x x x x x x - x x x x B
 YY MM DD 3 4

1. EXTERIOR CODE:
2S8
2. DIMENSION A/B/C/D (UNIT: mm)
3. NO. OF CONTACTS:
004 ~ 100
4. CONTACT FINISH:
"G" FULL GOLD PLATED
"S" SELECTIVE GOLD PLATED
"T" FULL TIN PLATED

**DIMENSIONI
SPECIALI**

1.00MM(0.039") PIN HEADER RIGHT ANGLE TYPE PROFILE= 1.00MM

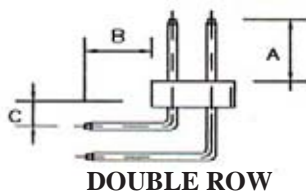
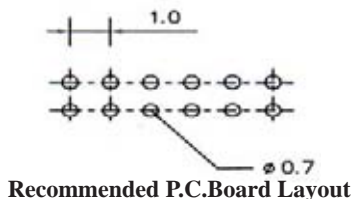
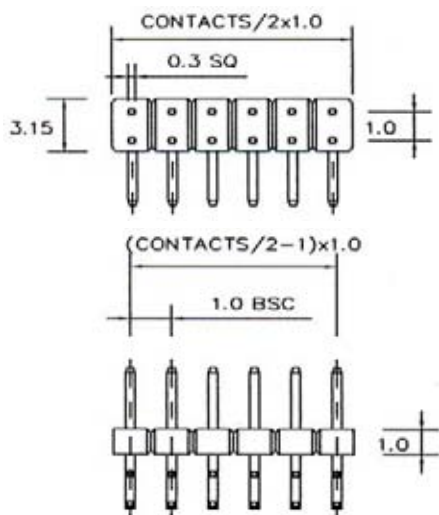


SPECIFICATIONS

Current Rating: 1.0 Amp
Dielectric Withstand: 500V AC
Insulator Resistance: 5000 MΩ min.
Contact Resistance: 20mΩ Max.
Operating Temperature: -40°C to + 105°C

MATERIALS

Insulator: Thermoplastic, UL94V-0
 Nylon-6T
Contacts: Copper Alloy
 All materials must be RoHS compliant.



SINGLE ROW	DOUBLE ROW	A	B	C
PL	PR	2.0	2.0	1.0
PP	PS	3.2	6.5	1.8
QT	PY	1.3	1.5	1.0
QU	QS	1.9	2.0	1.0

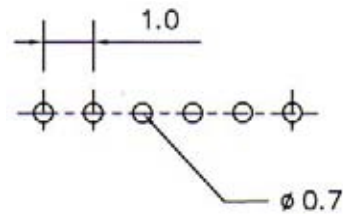
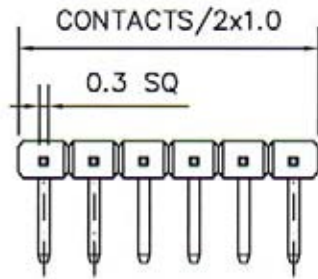
ORDERING INFORMATION:

P/N 100 $\frac{xx}{1}$ - $\frac{xxx}{2}$ $\frac{G}{3}$ B

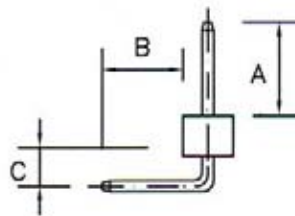
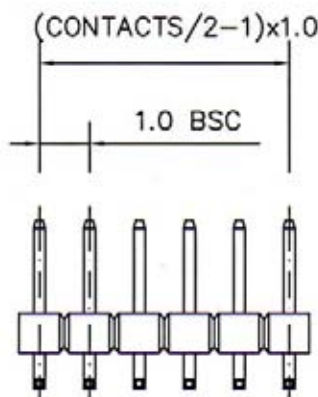
1. TERMINAL TYPE:
PL, PP, QT, QU, PR, PS, PY, QS
2. NO. OF CONTACTS:
002 ~ 050 FOR SINGLE ROW
004 ~ 100 FOR DOUBLE ROW
3. CONTACT FINISH:
"G" FULL GOLD PLATED

NOTE: SEE NEXT PAGES FOR CUSTOMER'S DESIGNS!

1.00MM(0.039") PIN HEADER SINGLE ROW RIGHT ANGLE TYPE PROFILE=1.00MM



Recommended P.C.Board Layout



SPECIFICATIONS

- Current Rating: 1.0 Amp
- Dielectric Withstand: 600V AC
- Insulator Resistance: 500 MΩ min.
- Contact Resistance: 20mΩ Max.
- Operating Temperature: -40°C to +105°C
- Max Process Temp: 230°C for 30-60 sec.
(260°C for 10 sec.)

MATERIALS

- Insulator: Polyester, UL94V-0
Nylon-6T
- Contacts: Brass
- All materials must be RoHS compliant.

ORDERING INFORMATION:

CODE: 1 0 1 1 D 6 - A/B/C - x x x x B

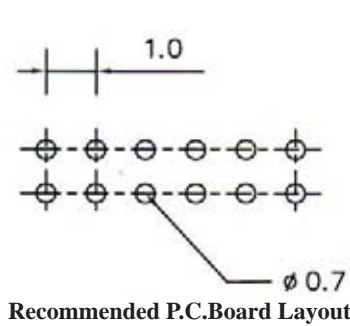
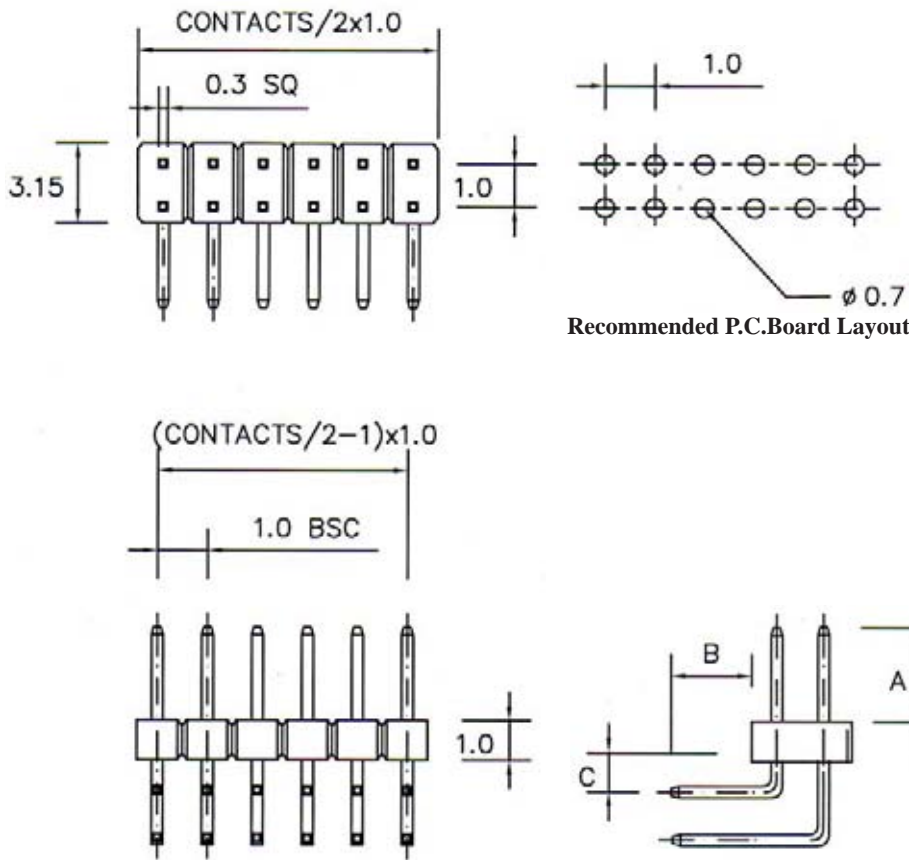
PLEASE GIVE US A CODE, THEN WE WILL GIVE YOU

P/N P x x x x x x x - x x x x B

1. EXTERIOR CODE:
1D6
2. DIMENSION A/B/C (UNIT: mm)
3. NO. OF CONTACTS:
002 ~ 050
4. CONTACT FINISH:
"G" FULL GOLD PLATED
"S" SELECTIVE GOLD PLATED
"T" FULL TIN PLATED

**DIMENSIONI
SPECIALI**

1.00MM(0.039") PIN HEADER DOUBLE ROW RIGHT ANGLE TYPE PROFILE=1.00MM



SPECIFICATIONS

- Current Rating: 1.0 Amp
- Dielectric Withstand: 600V AC
- Insulator Resistance: 500 M Ω min.
- Contact Resistance: 20m Ω Max.
- Operating Temperature: -40 $^{\circ}$ c to + 105 $^{\circ}$ c
- Max Process Temp: 230 $^{\circ}$ c for 30~60 sec.
(260 $^{\circ}$ c for 10 sec.)

MATERIALS

- Insulator: Polyester, UL94V-0
Nylon-6T
- Contacts: Brass
- All materials must be RoHS compliant.

ORDERING INFORMATION:

CODE: 1 0 0 $\frac{2}{1}$ D 6 - $\frac{A}{2}$ / $\frac{B}{3}$ / $\frac{C}{4}$ B

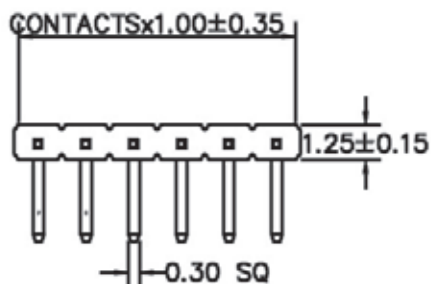
PLEASE GIVE US A CODE, THEN WE WILL GIVE YOU

P/N P $\frac{XX}{YY}$ $\frac{XXX}{MM}$ $\frac{XXX}{DD}$ - $\frac{XXX}{3}$ / $\frac{X}{4}$ B

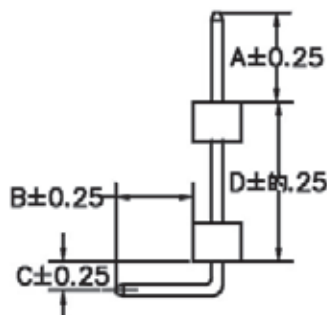
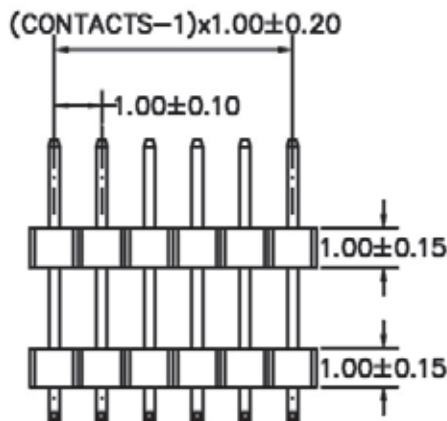
1. EXTERIOR CODE:
2D6
2. DIMENSION A/B/C (UNIT: mm)
3. NO. OF CONTACTS:
004 ~ 100
4. CONTACT FINISH:
"G" FULL GOLD PLATED
"S" SELECTIVE GOLD PLATED
"T" FULL TIN PLATED

**DIMENSIONI
SPECIALI**

1.00MM (0.039") PIN HEADER SINGLE ROW RIGHT ANGLE TYPE PROFILE=1.00MM



Recommended P.C.Board Layout



SPECIFICATIONS

Current Rating: 1A
 Contact Resistance: 20mΩ Max.
 Insulator Resistance: 1000MΩ Min.
 Withstanding Voltage: 500V AC/Min.
 Operating Temperature: -55°C to +105°C

MATERIALS

Insulator: NY6T UL94V-0, Black
 Contact: Copper Alloy
 All materials must be RoHS compliant.

ORDERING INFORMATION:

CODE: 1 0 1 1 D 8 - A/B/C/D - x x x x B
1 2 3 4

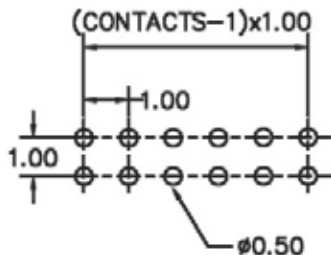
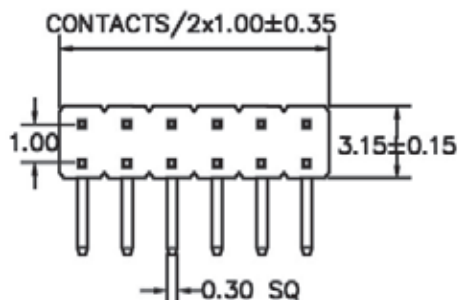
PLEASE GIVE US A CODE, THEN WE WILL GIVE YOU

P/N P x x x x x x x - x x x x B
YY MM DD 3 4

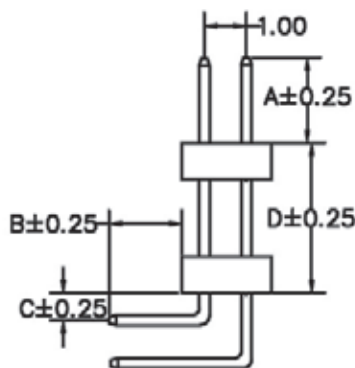
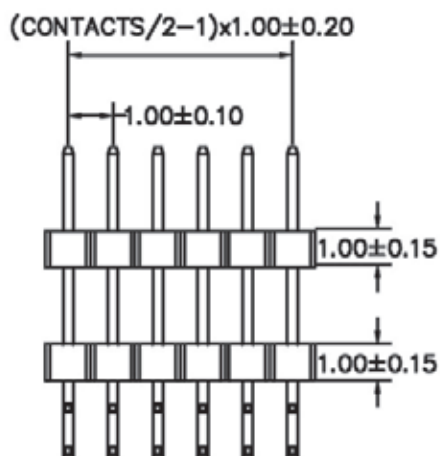
1. EXTERIOR CODE:
1D8
2. DIMENSION A/B/C/D (UNIT: mm)
3. NO. OF CONTACTS:
002 ~ 050
4. CONTACT FINISH:
"G" FULL GOLD PLATED
"S" SELECTIVE GOLD PLATED
"T" FULL TIN PLATED

**DIMENSIONI
SPECIALI**

1.00MM (0.039") PIN HEADER DOUBLE ROW RIGHT ANGLE TYPE PROFILE=1.00MM



Recommended P.C.Board Layout



SPECIFICATIONS

Current Rating: 1A
 Contact Resistance: 20mΩ Max.
 Insulator Resistance: 1000MΩ Min.
 Withstanding Voltage: 500V AC/Min.
 Operating Temperature: -55°C to +105°C

MATERIALS

Insulator: NY6T UL94V-0, Black
 Contact: Copper Alloy
 All materials must be RoHS compliant.

ORDERING INFORMATION:

CODE: 1 0 0 2 D 8 - A/B/C/D - x x x x B
 1 2 3 4

PLEASE GIVE US A CODE, THEN WE WILL GIVE YOU

P/N P x x x x x x x - x x x x B
 YY MM DD 3 4

1. EXTERIOR CODE:
2D8
2. DIMENSION A/B/C/D (UNIT: mm)
3. NO. OF CONTACTS:
004 ~ 100
4. CONTACT FINISH:
"G" FULL GOLD PLATED
"S" SELECTIVE GOLD PLATED
"T" FULL TIN PLATED

**DIMENSIONI
SPECIALI**