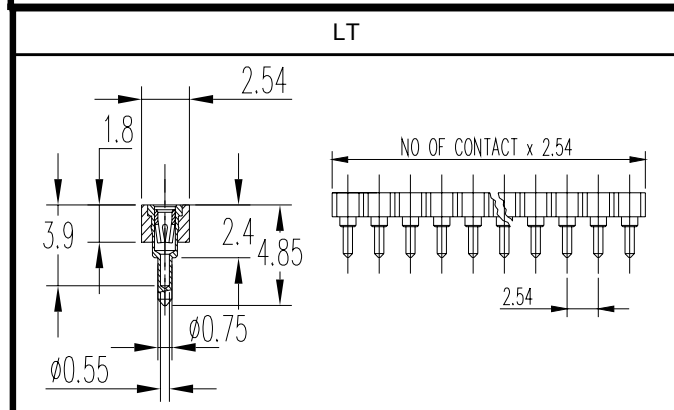
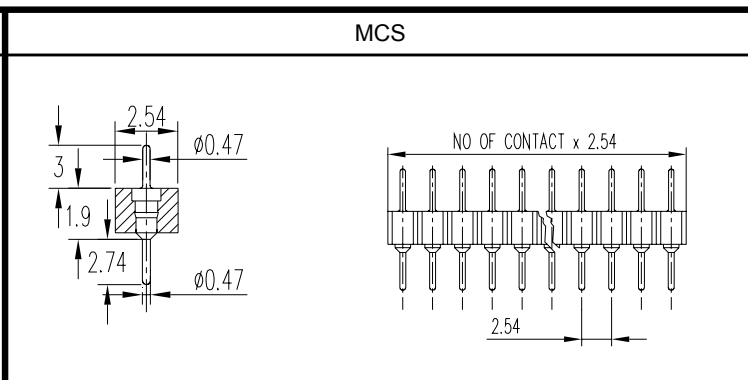
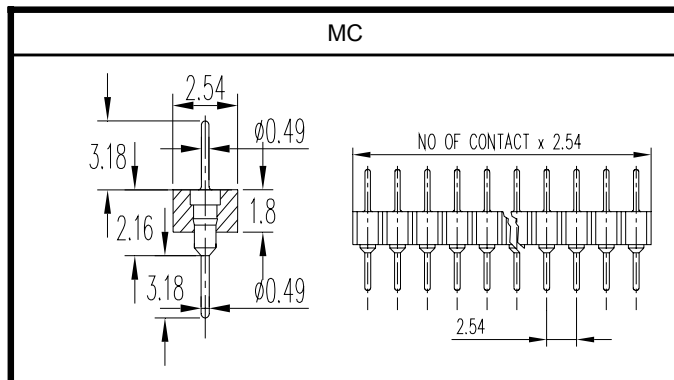


## SERIES 2502

SIP 2.54mm pitch / Sockets and Headers /  
Solder tail / Mating pin 0.47mm / Ultra low profile /  
Breakable



Pin style		LT / MC / MCS
Plating sleeve (pin)		5.0µm Tin
Plating contact (clip)		Au 24c flash
TYPE	NP Nbr PIN	ORDERING NUMBERS
2502	56 64 (*1)	2502.NP.SP.F.0

\*1) Availability from 1 to 64 contacts

### PLATING OPTIONS

Sleeve (pin), change letter F (5.0µm standard Tin) by:

- .C 0.25µm gold plating
- .O gold flash
- .D tin / lead non-RoHS

Contact (clip), change suffix 0 (standard Au 24c flash) by:

- .1 0.25µm average Au
- .2 0.50µm average Au
- .3 0.75µm average Au
- .4 0.75µm minimum 24c Au (MIL STD)
- .6 5.0µm tin
- .00 5.0µm tin / lead non-RoHS

### TECHNICAL DATA

<b>Temperature range</b>	-55°C to +125°C
<b>Insulator body</b>	Glass filled thermoplastic polyester, self-extinguishing, rated UL94V-0 PCB = standard PCT = high temperature (order with H) Example: 2502H64.MC.F.0
<b>Outer shell (sleeve)</b>	Screw machined Brass CuZn36Pb3 (C36000)
<b>Inner spring contact SC4</b>	Stamped and formed BeCu (C17200) gold or tin plated, accepts Ø0.40-0.56 or rectangular pin 0.25 x 0.45
<b>Insertion / Extraction</b>	Ø0.43 test pin Other forces available upon request.

Standard SC4.SH		SC4	
Insertion	350g max.	Insertion	320g max.
Extraction	100g min.	Extraction	50g min.

To order with inner spring type SC4, add letter A after F instead of the mark.

Example: 2502.56.LT.FA0

### ELECTRICAL DATA

<b>Rated current</b>	3A
<b>Maxi working voltage</b>	100V <sub>RMS</sub> / 150 V <sub>dc</sub>
<b>Contact resistance</b>	10 mΩ max
<b>Dielectric strength</b>	1000 V <sub>RMS</sub> min

## Standard SIP

2002

NP

SP

F

0

LP

Series.  
For insulator without center bar  
replace 0 by 1 at the serie n° end.

.	Standard
A	Automatic (Only with pin CC)
H	High temperature insulator
HA	High temperature Automatic ass.

Number of pins

Type of contacts

.=standard

For pitch x2, x3,x4, or other pitch:

Example: 2002H20.CL4F.0 (2.54X4=10.16)

Available with Positioning options (see GUIDE AND PAD description page 29)

Length code

(only for series for those is needed)

Clip plating option

.	Standard on catalog page
A	SC4
B	SC6.VLI
C	SC6.065
?	Etc.

Pin plating option

## Custom SIP

2002

NP

/ 16

SP

F

0

LP

Series  
For insulator without center bar  
replace 0 by 1 at the serie n°

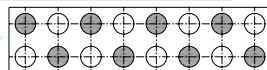
.	Standard
A	Automatic (Only with pin CC)
H	High temperature
HA	High temperature Automatic

Number of pins

/ = first version, B,C,... next versions

Number of positions

2022.8/16.CC.F.0



Type of contacts

Length code

(only for series for those is needed)

Clip plating option

.	Standard on catalog page
A	SC4
B	SC6.VLI
?	Etc.

Pin plating option

.=standard

For pitch x2, x3,x4, or other pitch:

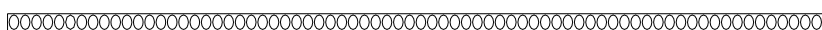
Example: 2002H20/16.LT2F.0 (2.54X2=5.08)

Available with Positioning options (see GUIDE AND PAD description page 29)

To order a special SIP

Customer			
Address			
ZIP		City	
Country			
Phone			
Fax			
E-mail			

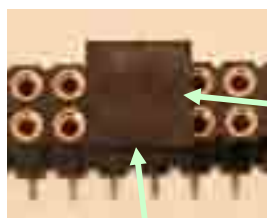
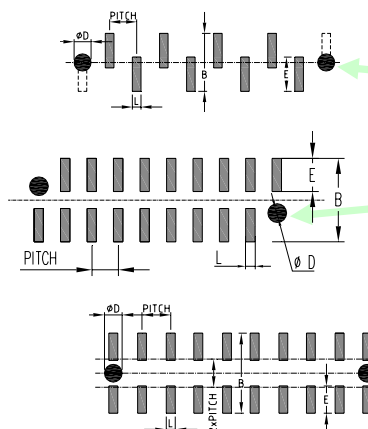
SIP



Series	
Type of construction	
Number of pins	
Number of positions	
Type of contact (can be yours)	
Pin plating option	
Type of clip (can be yours)	
Clip plating option	
Length code (if requested)	

Fill in the holes where you want the contacts. If your request isn't standard, please send us a detailed drawing. For the very specific design, insulator is made in Epoxy.

# Guide and Pad option



Width

Length



## PACKAGING OPTIONS

Box	Standard Example: 4002HNP.FH.SMV.F.0
Tape & Reel	Change the dash after NP into B Example: 4002HNPPBFH.SMV.F.0
Tube	Change the dash after NP into T Example: 4002HNPTFH.SMV.F.0
Tray	Change the dash after NP into R Example: 4002HNPRFH.SMV.F.0

Please consult customer service for availability

## POSITIONING CONTACT

For single row, the first and the last pin are not bent (positioning guide) but counted as contacts.

Series 2001, 4001, 2002, 4002, etc

For double row, the first and the last pin are not bent (positioning guide) but counted as contacts.

Series 2011, 4011, 2022, 4022, etc

## POSITIONING PIN

For double rows (2x pitch), the guides are not counted as contacts.

Guide Series 4042 in surface mount version.

Other series with these options upon request.

Add letter P before NP

Example: 4002HPNP.FH.SMV.F.0

## POSITIONING PEGS

Available for serie 2001, version PFH.SMH

## PICK & PLACE

Pad Place letter P between Np and B (or T or SP)  
Example: 4002HNPPBFH.SMV.F.0

For pick and place function, a pad is added in the middle of the socket.

Dimensions	Length	Width
Serie 2001	6.5 10	5 5
Serie 2011	6	6
Serie 4002	6.02	4.4
Serie 4022	7.97	4.4
Serie 4042	7.97	4.4