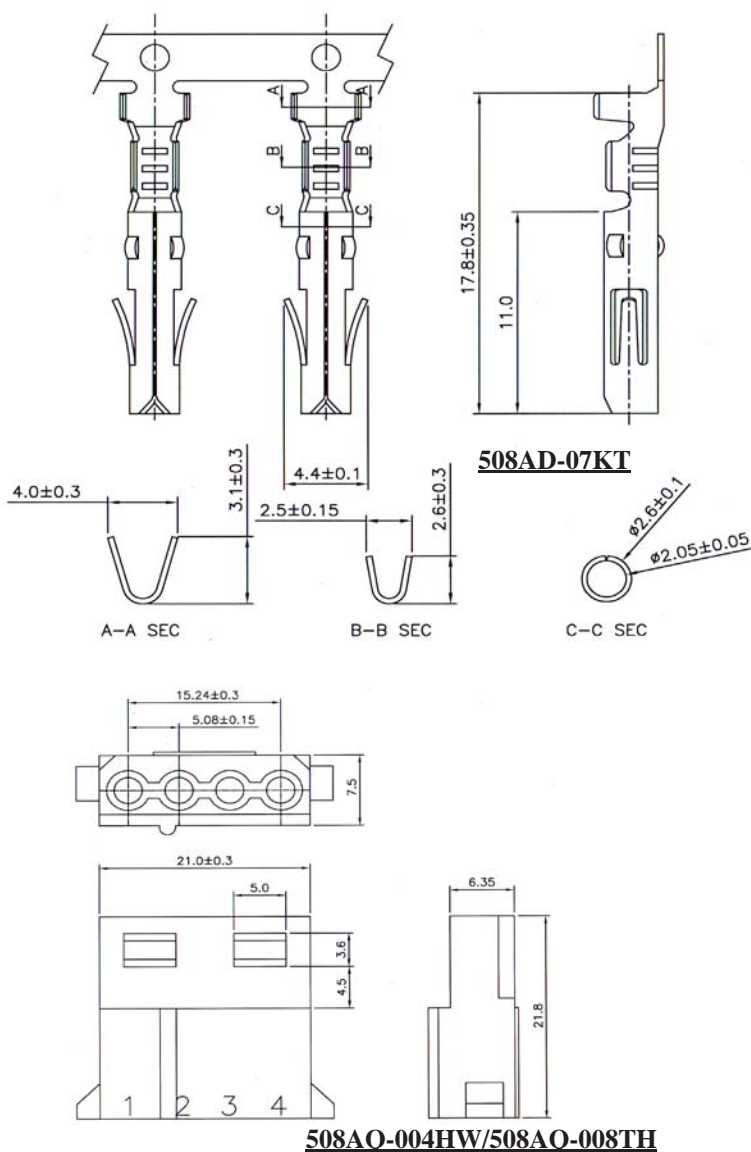


5.08MM(0.200") SPACING DISK DRIVE POWER CONNECTOR (1)



SPECIFICATIONS

Current Rating: 7.0 Amp
Dielectric Withstanding: 1500V AC
Insulation Resistance: 1000MΩ Min
Contact Resistance: 20mΩ Max.
Operating Temperature: -25°C to + 85°C

TERMINAL

Accepts AWG# 16-20 Wire Range
Material: Brass
Finish: Tin Plated
Thickness: 0.30mm

HOUSING

Material: Nylon 66, UL 94V-2
All materials must be RoHS compliant.

ORDERING INFORMATION:

CRIMP TERMINAL:

P/N 508AD-07KT

PU= 7.000PCS/REEL

NOTE: ACCEPTS 508AQ HOUSING

HOUSING:

P/N 508AQ - x x x H W

HOUSING xxx = 002, 003, 004

NOTE: ACCEPTS 508AD TERMINAL

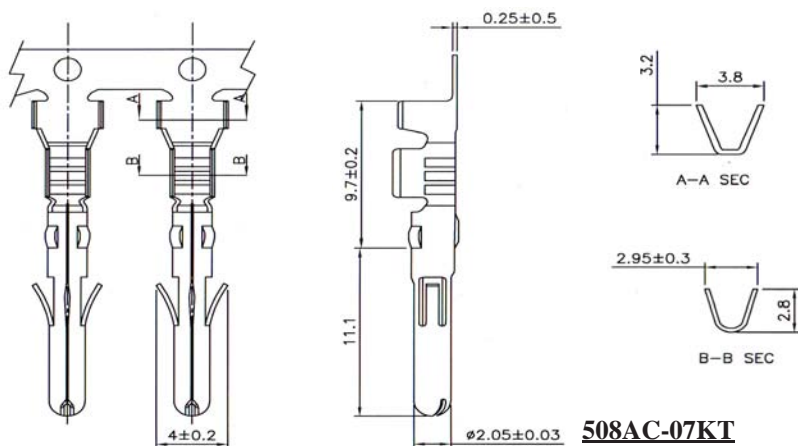
P/N 508AQ-008TH

SPECIAL PACKAGING WITH
 4PCS 508AD-001T (TERMINAL) &
 1PC 508AQ-004HW (HOUSING)
 IN ONE POLYBAG

P/N 508AQ-004TH

DITTO, BUT WITH 508AQ-002HW &
 2PCS 508AD-001T

5.08MM(0.200") SPACING DISK DRIVE POWER CONNECTOR (2)



SPECIFICATIONS

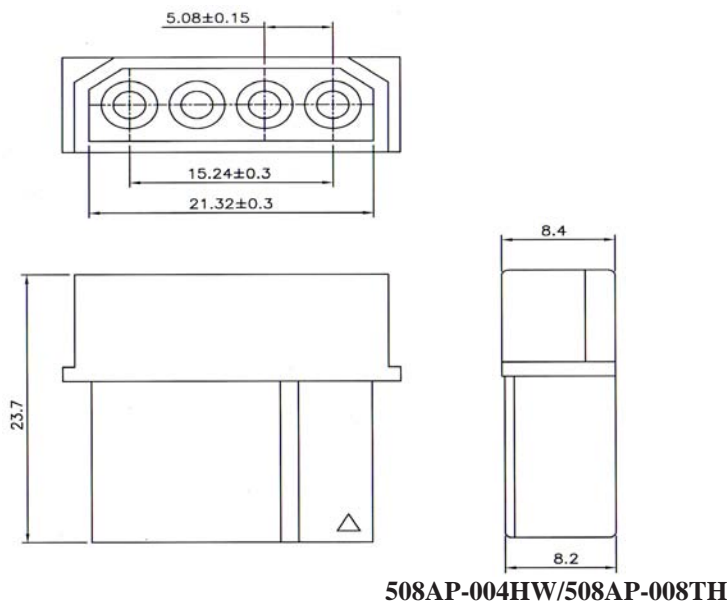
Current Rating: 7.0 Amp
Dielectric Withstanding: 1500V AC
Insulation Resistance: 1000MΩ Min
Contact Resistance: 20mΩ Max.
Operating Temperature: -25°C to + 85°C

TERMINAL

Accepts AWG# 16-20 Wire Range
Material: Brass
Finish: Tin Plated
Thickness: 0.25mm

HOUSING

Material: Nylon 66, UL 94V-2
 All materials must be RoHS compliant.



ORDERING INFORMATION:

CRIMP TERMINAL:

P/N 508AC-07KT

PU= 7.000PCS/REEL

NOTE: ACCEPTS 508AP HOUSING

HOUSING:

P/N 508AP-004HW

HOUSING xxx = 002, 003, 004

NOTE: ACCEPTS 508AC TERMINAL

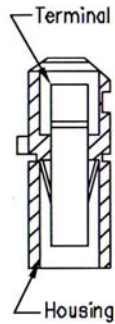
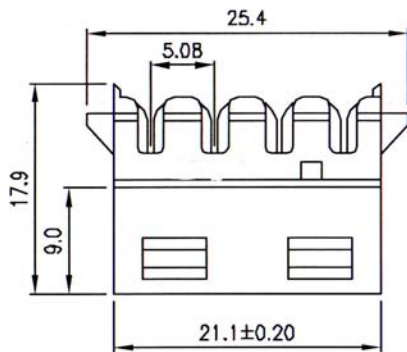
P/N 508AP-008TH

SPECIAL PACKAGING WITH
 4PCS 508AC-001T (TERMINAL) &
 1PC 508AP-004HW (HOUSING)
 IN ONE POLYBAG

P/N 508AP-004TH

DITTO, BUT WITH 508AP-002HW &
 2PCS 508AC-001T

5.08MM(0.200") SPACING DISK DRIVE POWER CONNECTOR (3)

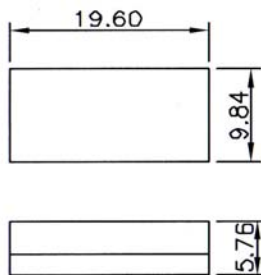
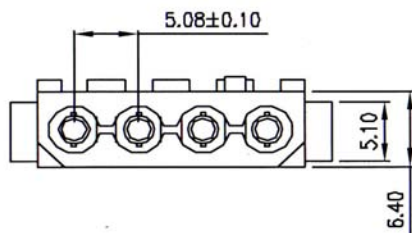


SPECIFICATIONS

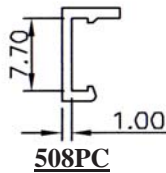
Current Rating: 7.0 Amp
Dielectric Withstanding: 1500V AC
Insulation Resistance: 1000MΩ Min
Contact Resistance: 20mΩ Max.
Operating Temperature: -25°C to + 85°C

MATERIALS

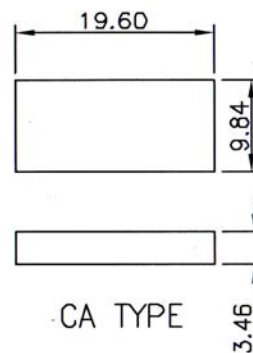
Insulation Material: Nylon 66, UL 94V-2
Contact Material: Brass
 All materials must be RoHS compliant.



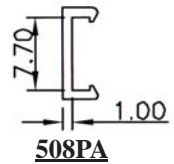
C TYPE



508PC



CA TYPE



508PA

ORDERING INFORMATION:

P/N 508 $\frac{I}{1}$ PC - 004 T $\frac{V}{2}$

INCLUDING
4 PIN HOUSING WITH TERMINALS
& FEED TO COVER C TYPE

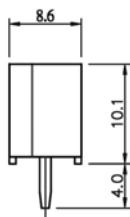
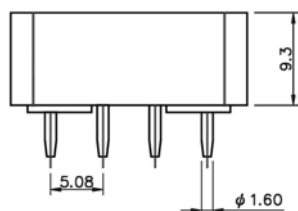
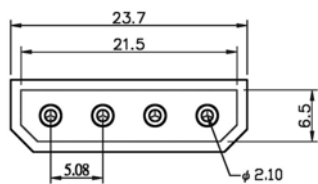
- WIRE AWG NO.:
"P" AWG# 18
"Q" AWG# 20
"R" AWG# 22
- INSULATOR COLOR:
"V" IVORY (STANDARD)
"R" RED
"N" GREEN
"W" WHITE
"Y" YELLOW
"B" BLACK

P/N 508 $\frac{I}{1}$ PA - 004 T $\frac{V}{2}$

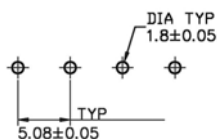
INCLUDING
4 PIN HOUSING WITH TERMINALS
& FEED THRU COVER CA TYPE

- WIRE AWG NO.:
"P" AWG# 18
"Q" AWG# 20
"R" AWG# 22
- INSULATOR COLOR:
"V" IVORY (STANDARD)
"R" RED
"N" GREEN
"W" WHITE
"Y" YELLOW
"B" BLACK

5.08MM(0.200") SPACING DISK DRIVE POWER CONNECTOR (4)



508AS



Recommended P.C.Board Layout

SPECIFICATIONS

Current Rating: 5.0 Amp

Voltage Rating: 250V AC/DC

Insulation Resistance: 1000MΩ Min

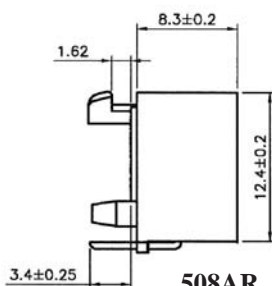
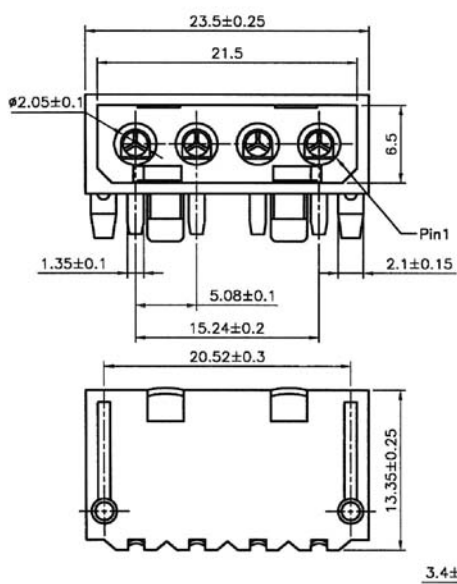
Operating Temperature: -25°C to + 85°C

WAFER

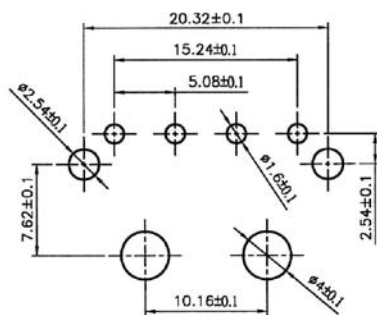
Material: Nylon 66, UL94V-2

Pitch: 5.08mm(0.200")

All materials must be RoHS compliant.



508AR



Recommended P.C.Board Layout

ORDERING INFORMATION:

P/N 508 $\frac{1}{X}$ - $\frac{X}{XX}$ T W

1. TERMINAL TYPE:

"AS" STRAIGHT TYPE

"AR" RIGHT ANGLE TYPE

2. NO. OF CONTACTS:

004

NOTE: MATES WITH 508AQ-004HW &
508AH-004HW HOUSINGS

5.08MM(0.200") SPACING DISK DRIVE POWER CONNECTOR (5)

SPECIFICATIONS

Voltage Rating: 250V AC/DC

Current Rating: 3A AC/DC

Withstanding Voltage: 1500V AC/Minute

Insulation Resistance: 1000M Ω Min.

Temperature Range: -25°C to +105°C

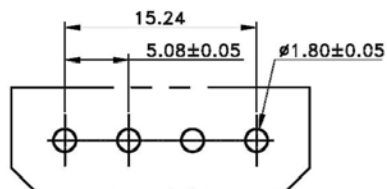
Contact Resistance: 20m Ω Max

MATERIAL

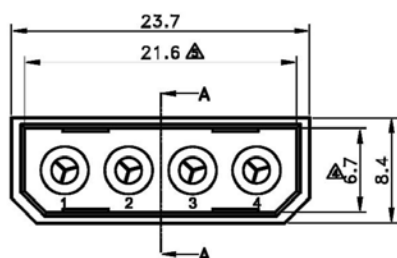
Contact: Brass, Tin Plated

Base: Nylon 66, UL94V-2 or UL94V-0

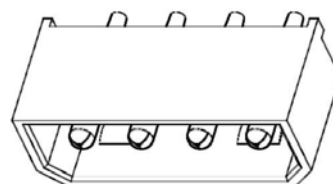
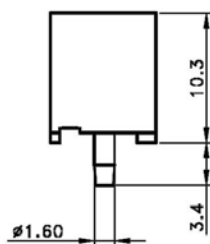
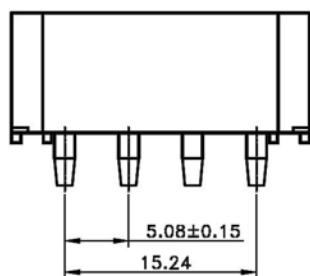
All materials must be RoHS compliant.



Recommended P.C.Board Layout



SECTION A-A

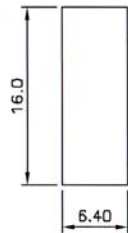
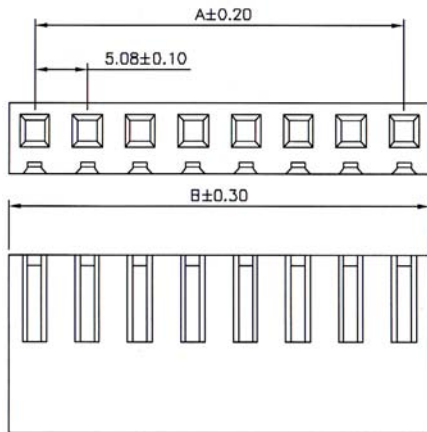


ORDERING INFORMATION:

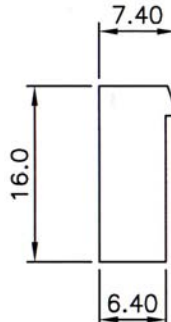
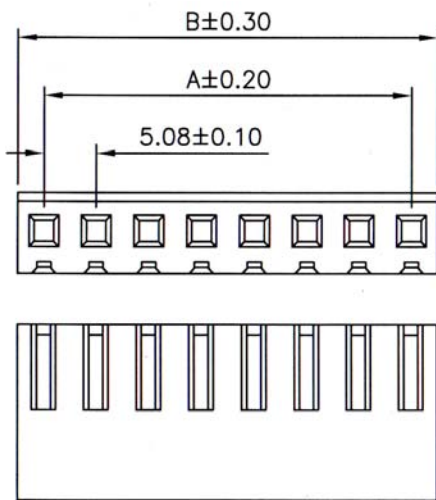
P/N 508 AT - 004 TW
1 2

1. TERMINAL TYPE:
"AT" STRAIGHT TYPE
2. NO. OF CONTACTS:
004

5.08MM(0.200") SPACING WIRE-TO-BOARD SYSTEM (A1)



508HA



508HB

SPECIFICATIONS

Current Rating: 7.0 Amp

Insulation Resistance: 1000MΩ Min

Dielectric Withstanding: 1500V AC

Contact Resistance: 20mΩ Max.

Operating Temperature: -25°C to +85°C

MATERIALS

Insulation Material: UL 94V-2

Nylon 66

All materials must be RoHS compliant.

508HA/508HB

No. of Contacts	Dimensions(mm)	
	A	B
02	5.08	10.30
03	10.16	15.38
04	15.24	20.46
05	20.32	25.54
06	25.40	30.62
07	30.48	35.70
08	35.56	40.78
09	40.65	45.86
10	45.72	50.94
11	50.80	56.02
12	55.88	61.10

ORDERING INFORMATION:

P/N 508 $\frac{1}{\text{XX}}$ - $\frac{2}{\text{XXX}}$ H V

1. HOUSING TYPE:

"HA" W/O LOCATING RAMP

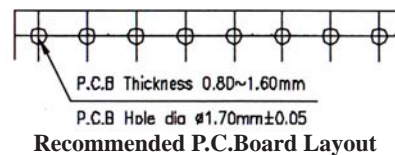
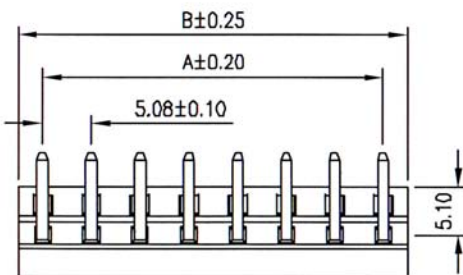
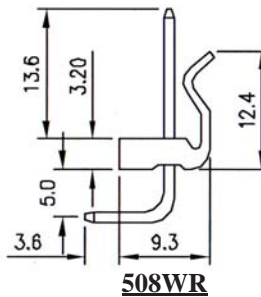
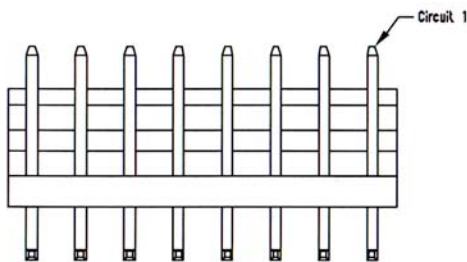
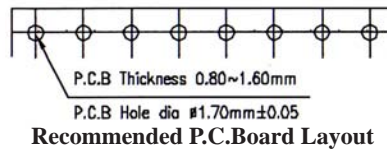
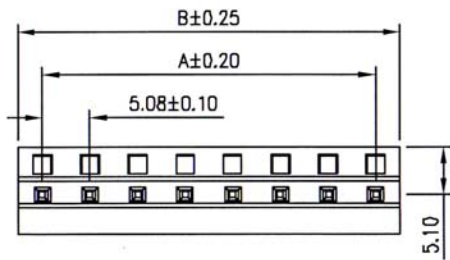
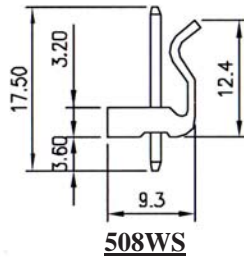
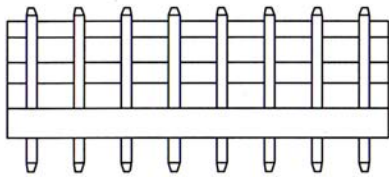
"HB" WITH LOCATING RAMP

2. NO. OF CONTACTS:

002 ~ 012

NOTE: ACCEPTS 396MT & 396MU TERMINALS

5.08MM(0.200") SPACING WIRE-TO-BOARD SYSTEM (A2)



SPECIFICATIONS

Current Rating: 7.0 Amp

Insulation Resistance: 1000MΩ Min

Dielectric Withstanding: 1500V AC

Contact Resistance: 20mΩ Max.

Operating Temperature: -25°C to +85°C

MATERIALS

Insulation Material: UL 94V-2

Nylon 66

Contact Material: Brass

All materials must be RoHS compliant.

508WS

No. of Contacts	Dimensions(mm)	
	A	B
02	5.08	10.16
03	10.16	15.24
04	15.24	20.32
05	20.32	25.40
06	25.40	30.48
07	30.48	35.56
08	35.56	40.64
09	40.65	45.72
10	45.72	50.80
11	50.80	55.88
12	55.88	60.96

508WR

No. of Contacts	Dimensions(mm)	
	A	B
02	5.08	10.16
03	10.16	15.24
04	15.24	20.32
05	20.32	25.40
06	25.40	30.48
07	30.48	35.56
08	35.56	40.64
09	40.65	45.72
10	45.72	50.80
11	50.80	55.88
12	55.88	60.96
13	60.96	66.04
14	66.04	71.12
15	71.12	76.20

ORDERING INFORMATION:

P/N 508 $\frac{xx}{1}$ - $\frac{xxx}{2}$ $\frac{T}{3}$ W

1. TERMINAL TYPE:

"WS" STRAIGHT TYPE

"WR" RIGHT ANGLE TYPE

2. NO. OF CONTACTS:

002 ~ 015

3. CONTACT FINISH:

"T" FULL TIN PLATED

NOTE: MATES WITH 508HA & 508HB HOUSING