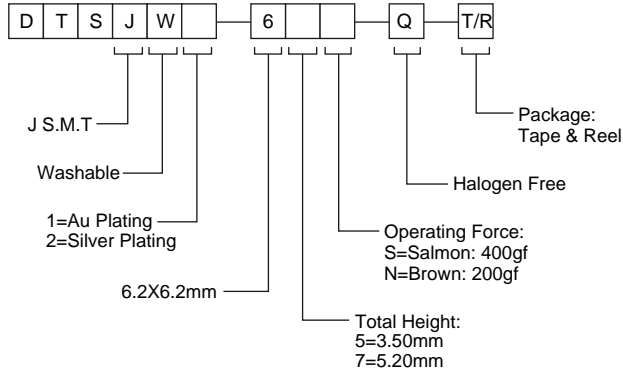


DTSJW1(2)-6 SERIES

6x6 J SMT Washable Type IP67



HOW TO ORDER



SPECIFICATION

MECHANICAL

Operation Force: 400±100gf / 200±50gf
Stroke: 0.60±0.20 mm / 0.40±0.20

ENVIRONMENTAL

Operation Temperature Range : -40°C to +85°C
Storage Temperature Range : -40°C to +85°C

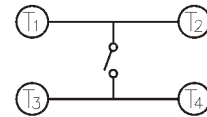
ELECTRICAL

Electrical Life: 300,000 cycles
Rating : 50mA, 12VDC
Sealed IP67

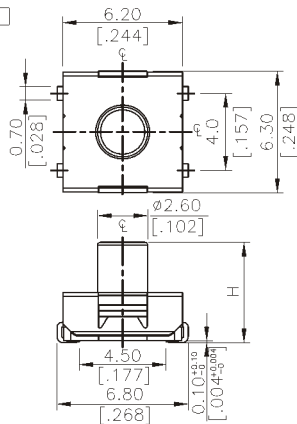
PACKAGE

Tape & Reel: 900 pcs/reel

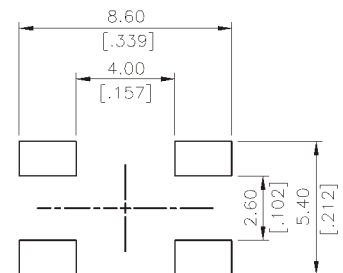
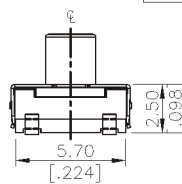
CIRCUIT



DTSJW□-6□



DTSJW□-67	5.20 [.205]
DTSJW□-65	3.50 [.138]
PART NO.	H



P.C.B. LAYOUT

TACT SWITCH