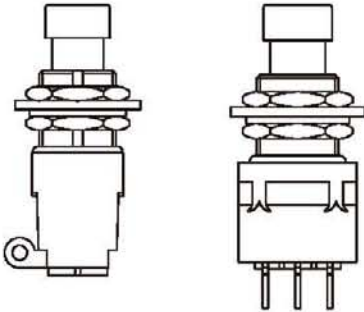


## SPECIFICATIONS:

CONTACT RATING: 2A/4A 250/125VAC, 2A/4A 24/12VDC.  
ELECTRICAL LIFE: 20,000 make-and-break cycles at full load.  
CONTACT RESISTANCE: 50m-ohms max. initial @2-4VDC  
INSULATION RESISTANCE: 500VDC 100M-ohms min.  
DIELECTRIC STRENGTH: 1,500VAC for 1 minute.  
OPERATING FORCE: SPDT (M1 & M2) 1500gf, DPDT (M1) 1600gf (M2) 1900gf, 3PDT (M1 & M2) 3500gf.  
OPERATING TEMPERATURE: -20°C to +65°C

**NEW!**



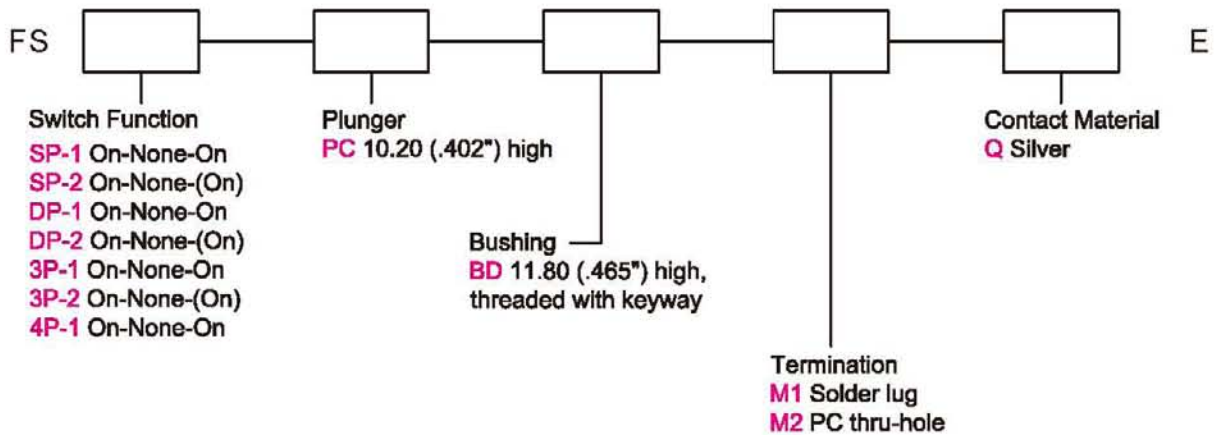
## MATERIALS:

BASE: Nylon 66 (UL94V-0).  
PLUNGER & CAP: Brass, nickel plated.  
BUSHING: Brass, nickel plated  
COVER: Stainless steel.  
PIVOT PIN: Brass or POM.  
SPRING: Piano wire.  
TERMINAL & CONTACT: Copper, tin plated.  
NUT: Brass, nickel plated.  
RING: POM.  
WASHER: Steel, nickel plated.

Specifications and Dimensions subject to change

If your preferred product configuration is not shown, please contact our sales representative for custom design.

## HOW TO ORDER SYSTEM

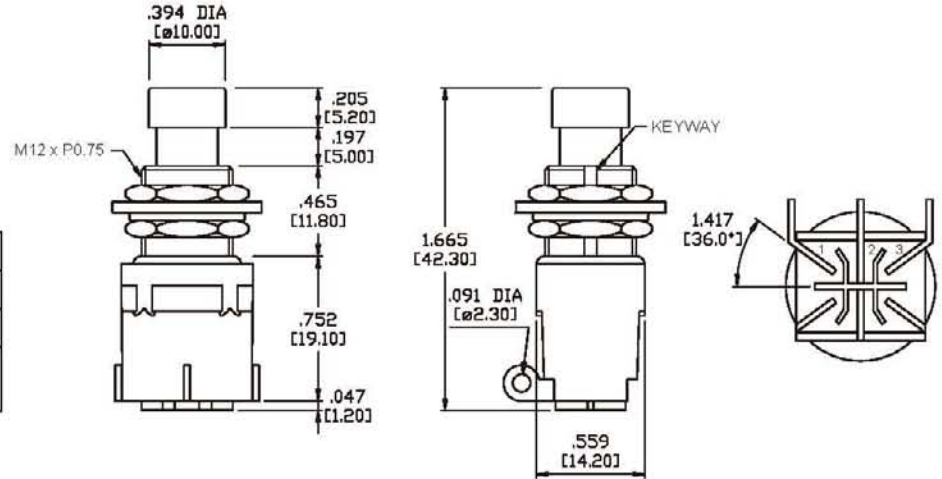


## SPDT



| Model No.   | Switching Position |      |      |
|-------------|--------------------|------|------|
| SP-1        | ON                 | NONE | ON   |
| SP-2        | ON                 | NONE | (ON) |
| Term. Comm. | 2-3                | OPEN | 2-1  |

Schematic

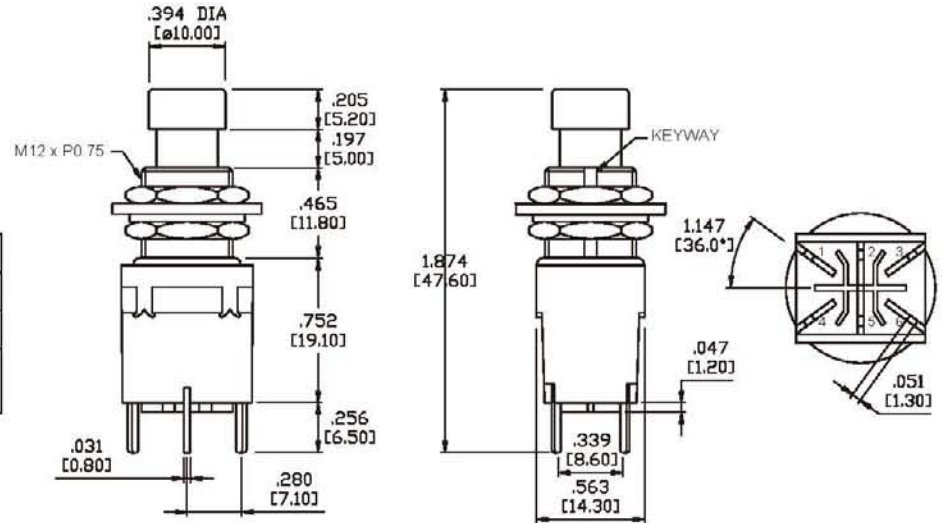
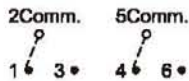


## DPDT



| Model No.   | Switching Position |      |         |
|-------------|--------------------|------|---------|
| DP-1        | ON                 | NONE | ON      |
| DP-2        | ON                 | NONE | (ON)    |
| Term. Comm. | 2-3,5-6            | OPEN | 2-1,5-4 |

Schematic

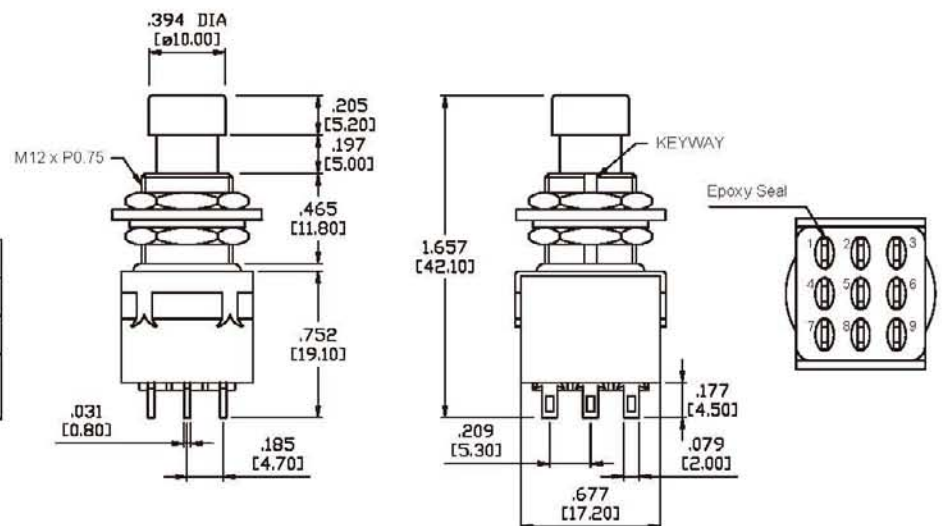


## 3PDT



| Model No.   | Switching Position |      |                |
|-------------|--------------------|------|----------------|
| 3P-1        | ON                 | NONE | ON             |
| 3P-2        | ON                 | NONE | (ON)           |
| Term. Comm. | 2-3,5-6<br>8-9     | OPEN | 2-1,5-4<br>8-7 |

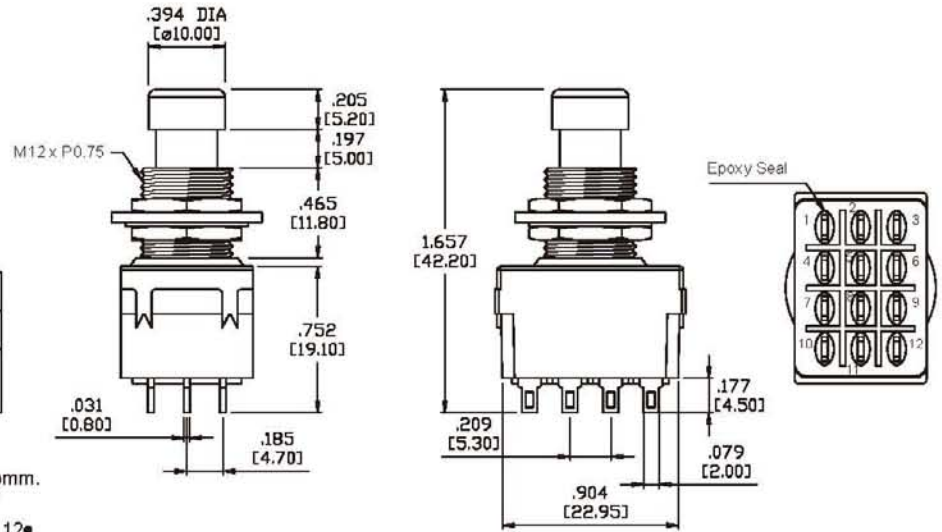
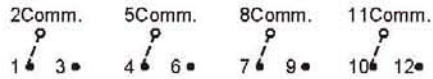
Schematic



4PDT

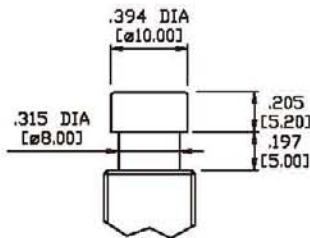
| Model No.   | Switching Position   |      |                      |
|-------------|----------------------|------|----------------------|
|             | 4P-1                 | ON   | NONE                 |
| Term. Comm. | 2-3,5-6<br>8-9,11-12 | OPEN | 2-1,5-4<br>8-7,11-10 |

Schematic

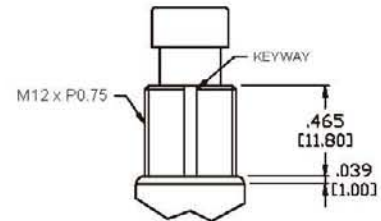


## PLUNGER & BUSHING OPTIONS

PC

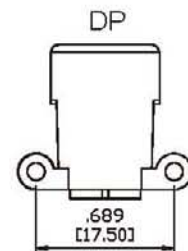
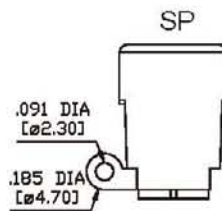
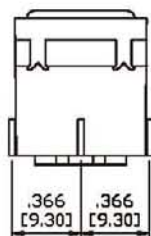


BD

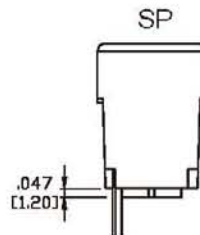
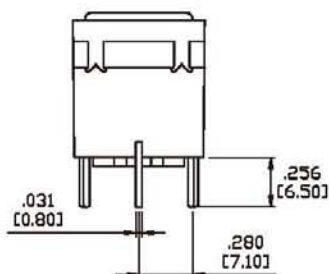


## TERMINATION OPTIONS

M1

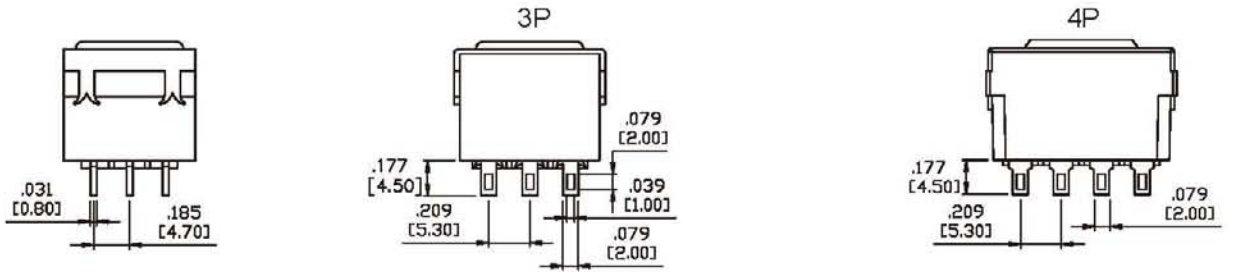


M2

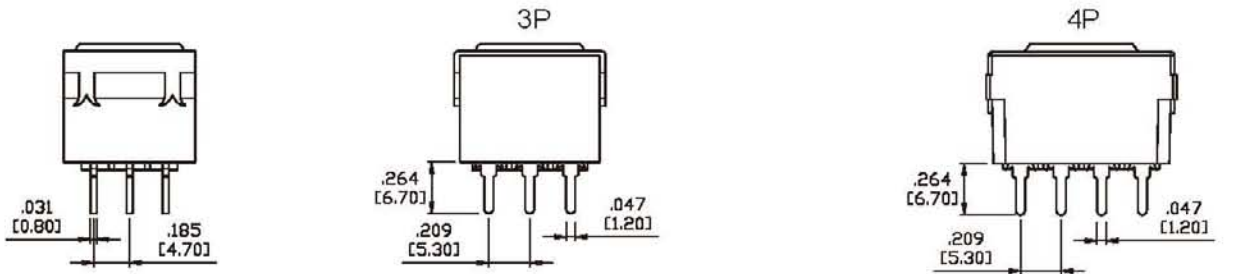


TERMINATION OPTIONS

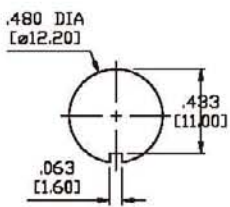
M1



M2



PANEL & PC MOUNTING



Panel Thickness 3.00mm max.

