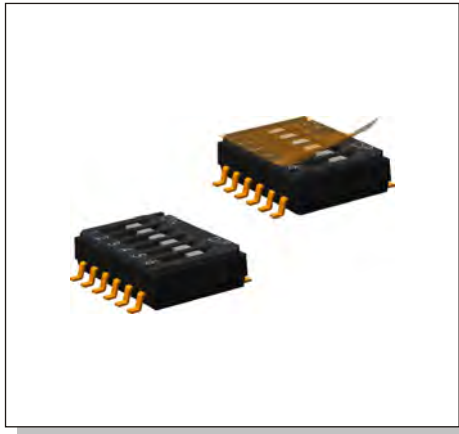
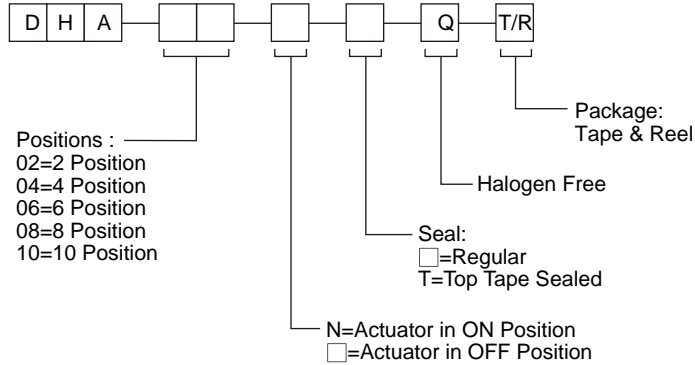


# DHA SERIES

## 2.2mm Half Pitch Type



### HOW TO ORDER



### SPECIFICATION

#### MECHANICAL

Operation Force: 500gf  
 Stroke: 0.8mm

#### ENVIRONMENTAL

Operation Temperature Range: -40°C to +85°C.  
 Storage Temperature Range: -40°C to +85°C.

#### ELECTRICAL

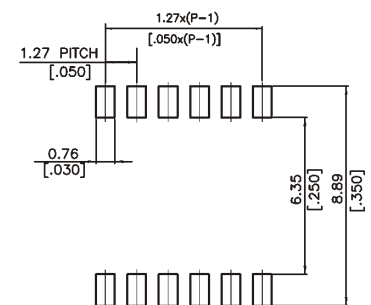
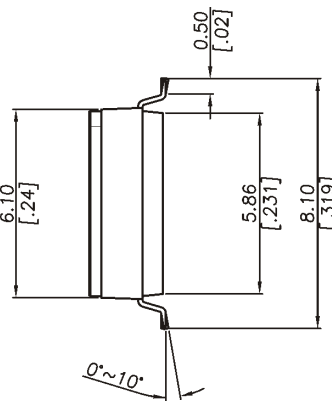
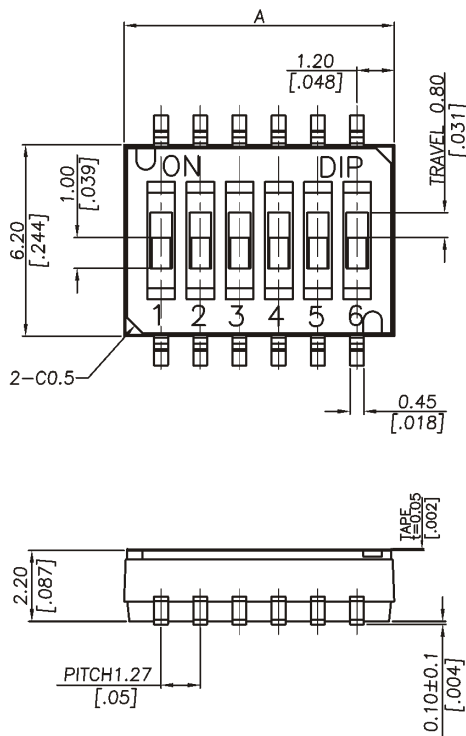
Electrical Life: 2,000 operation cycles  
 Non-Switching Rating: 100mA, 50VDC.  
 Switching Rating: 25mA, 24VDC.

#### PACKAGE

Tape & Reel: 1800 pcs/reel



### DHA



P.C.B. LAYOUT

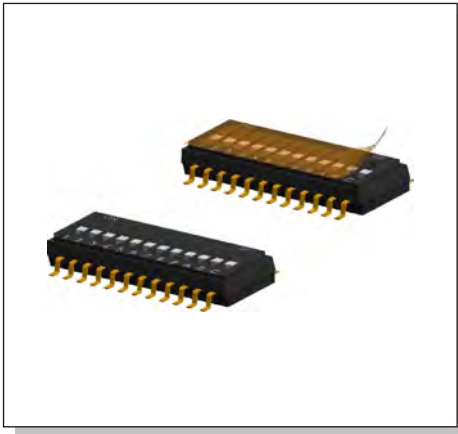
DHA-04Q	4	6.21 [.244]
DHA-06Q	6	8.75 [.344]
PROD.NO.	NO. OF POS	DIM A

# HDS SERIES

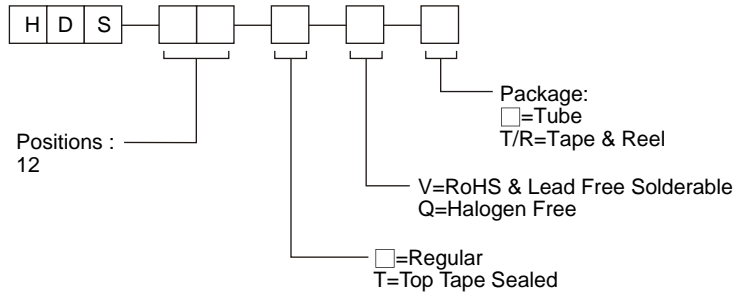
## 2.3mm Half Pitch Type



DIP SWITCH



### HOW TO ORDER



### SPECIFICATION

#### MECHANICAL

Operation Force: 600gf  
 Stroke: 0.6mm

#### ENVIRONMENTAL

Operation Temperature Range: -20°C to +70°C.  
 Storage Temperature Range: -40°C to +85°C.

#### ELECTRICAL

Electrical Life: 2,000 operation cycles  
 Non-Switching Rating: 100mA, 50VDC.  
 Switching Rating: 25mA, 24VDC.

#### PACKAGE

HDS-12: 27 pcs/tube  
 Tape & Reel: 1000 pcs/reel

SCHEMATIC(TYP.)



### HDS

