

**SPECIFICATIONS:**

CONTACT RATING: Refer to "Contact Material Options" for more info.  
 ELECTRICAL LIFE: 30,000 make-and break cycles at full load.  
 CONTACT RESISTANCE: 20mΩ max. initial @ 2-4VDC  
 100mA for both silver and gold plated contacts.  
 INSULATION RESISTANCE: 1,000MΩ min.  
 DIELECTRIC STRENGTH: 1500V RMS min. @ sea level.  
 OPERATING TEMPERATURE: -30°C to +85°C.

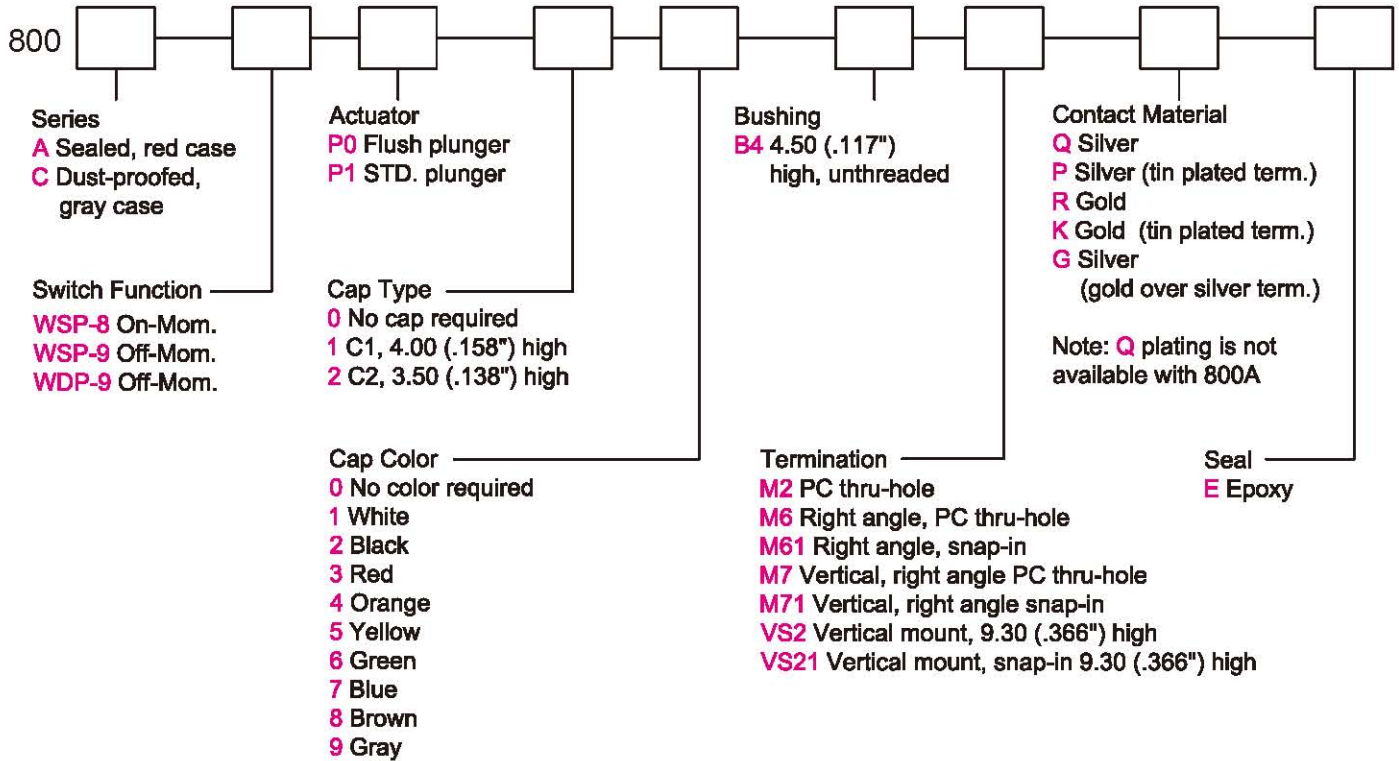
**MATERIALS:**

CASE & BUSHING: PA9T or FR52, flame retardant, heat stabilized (UL 94V-0).  
 PLUNGER: FR52 (UL 94V-0), with internal o-ring sealed (800A).  
 PLUNGER: FR52 (UL 94V-0) (800C).  
 SWITCH SUPPORT: Brass, tin plated.  
 TERMINAL SEAL: Epoxy.

Specifications and Dimensions subject to change

If your preferred product configuration is not shown, please contact our sales representative for custom design.

**HOW TO ORDER SYSTEM**



# Series 800A/C

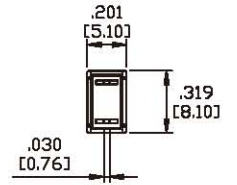
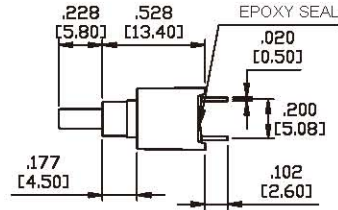
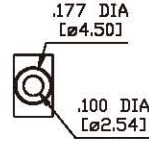
# (Sealed) Sub-Miniature Pushbutton Switches

## SPST



Model No.	Type	
WSP-9	OFF	MOM

Schematic

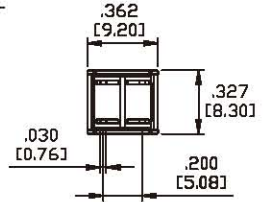
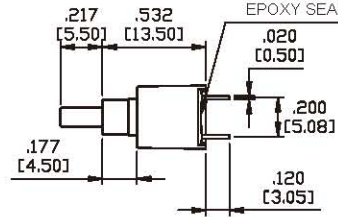
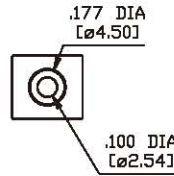
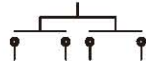


## DPST



Model No.	Type	
WDP-9	OFF	MOM

Schematic

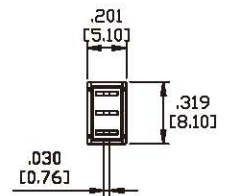
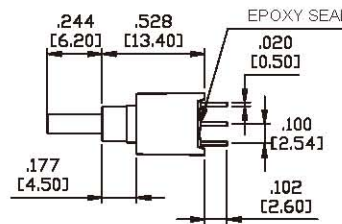
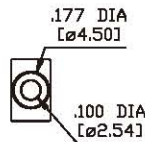
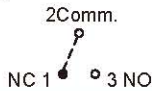


## SPDT



Model No.	Type	
WSP-8	ON	MOM
Term. Comm.	2-1	2-3

Schematic

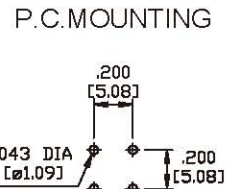
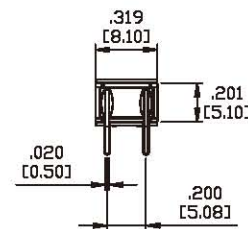
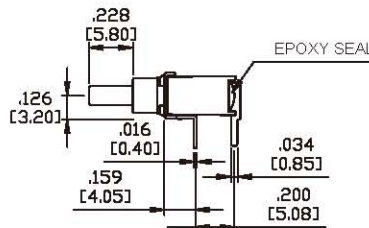
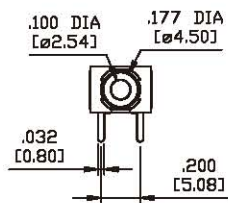


## TERMINATION OPTIONS

### M6



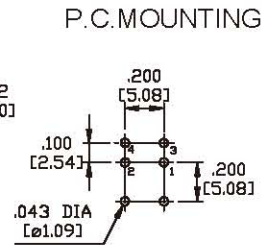
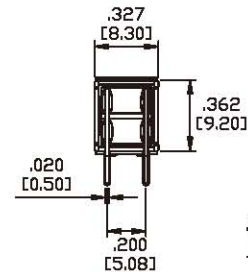
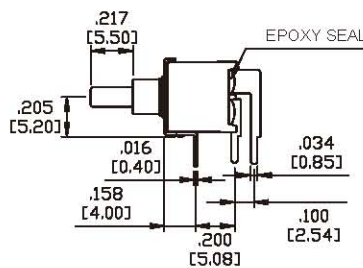
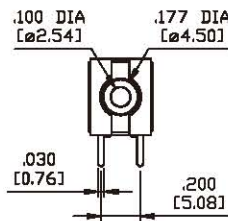
SPST



### M6



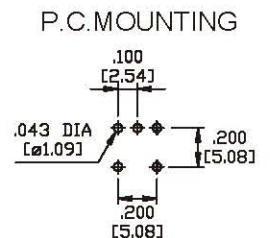
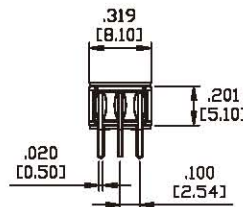
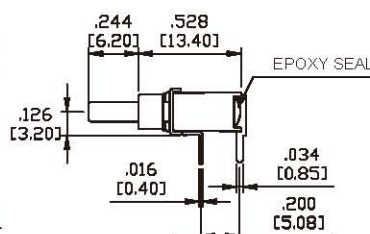
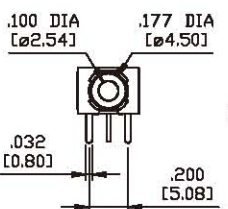
DPST



### M6

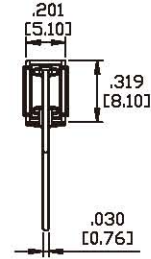
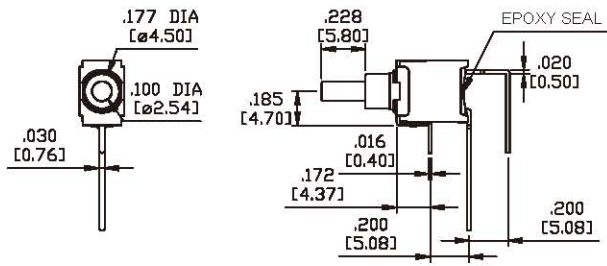


SPDT

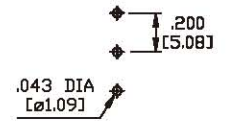


TERMINATION OPTIONS

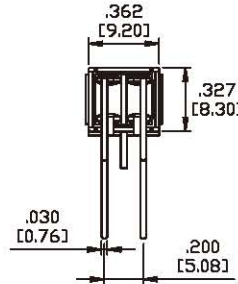
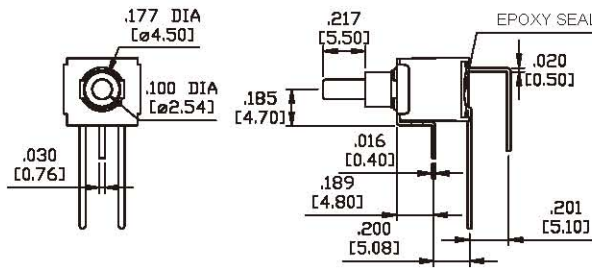
M7



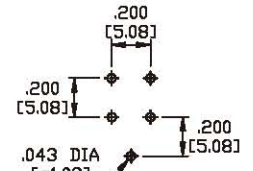
P.C. MOUNTING



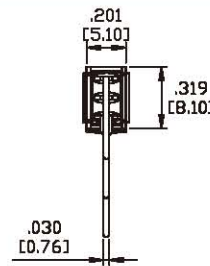
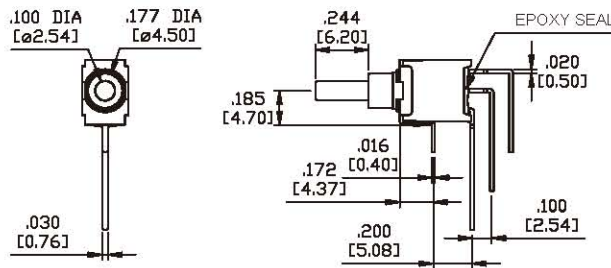
M7



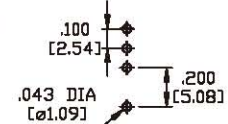
P.C. MOUNTING



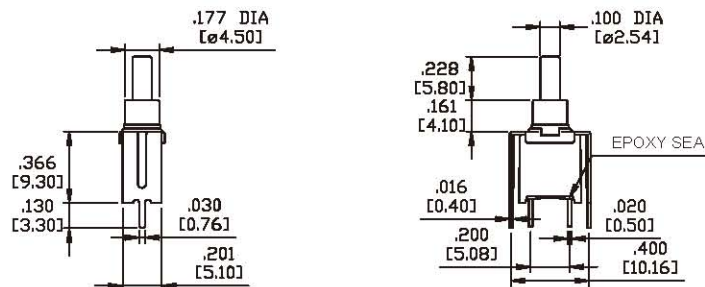
M7



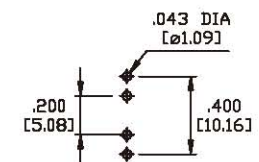
P.C. MOUNTING



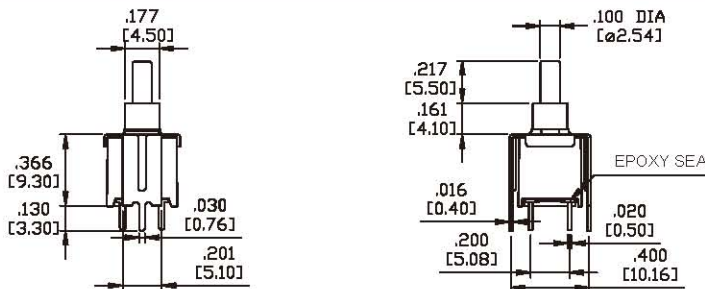
VS-2



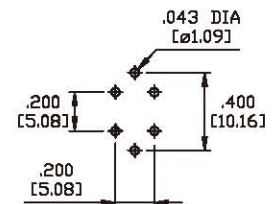
P.C. MOUNTING



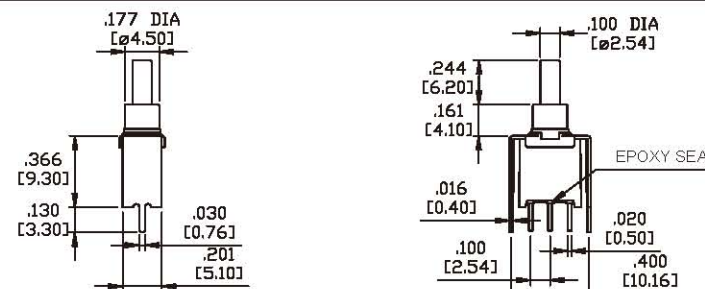
VS-2



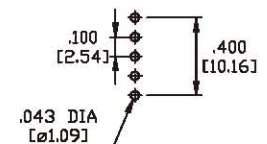
P.C. MOUNTING



VS2



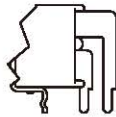
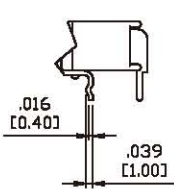
P.C. MOUNTING



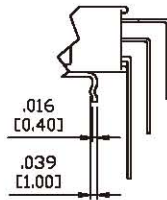
# Series 800A/C (Sealed) Sub-Miniature Pushbutton Switches

## SNAP-IN TERMINATION OPTIONS

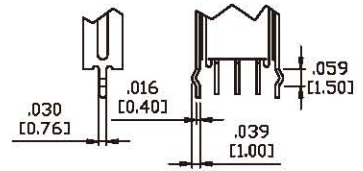
M61



M71



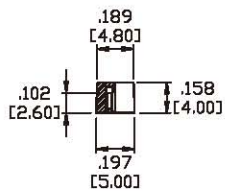
VS21



\* PC Mounting for M61,M71,VS21 refer to M6,M7,VS2 respectively.

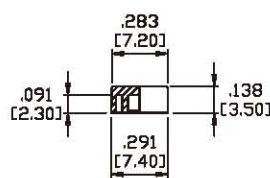
## PLUNGER CAPS

C1



\* MATERIAL: ABS.

C2



\* MATERIAL: ABS.

### CAP COLORS

CAP COLORS			
1	White	6	Green
2	Black	7	Blue
3	Red	8	Brown
4	Orange	9	Gray
5	Yellow		

## CONTACT MATERIAL OPTIONS

Coding	Contact Material	Terminal Plating	Rating	Agency Approvals
G	Silver <sup>1</sup>	Gold over silver <sup>3</sup>	1Amps @ 125VAC or 28VDC	IP67
P		Tin plated <sup>5</sup> / <sub>7</sub>		
R	Gold <sup>2</sup>	Gold plated <sup>4</sup>	0.4VA max @ 20V max (AC or DC)	IP67
K		Tin plated <sup>5</sup> / <sub>6</sub>		

\* Standard G plating for sealed product.

1. Movable Contact: Copper alloy, silver plated.
2. Movable Contact: Copper alloy with gold plated over nickel plated.
3. Terminals: Silver plated with outer layer in gold plating.
4. Terminals: Copper alloy, with gold plated over nickel plated.
5. Outer Terminals: Copper alloy with pure tin plated.
6. Terminal Contact: Gold plated over nickel plated.
7. Terminal Contact: Palladium nickel alloy (or Silver) plated.

\* IP67 protection for 800A series only.